

# Positioning sleeve for indexing pin New

## SDC

## For pin Ø4 to Ø12

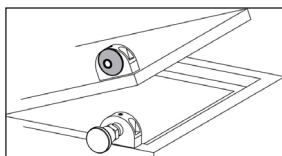
- Suitable for indexing pins and indexing locks
- Low wear due to hardened cone
- Materials:
  - Hardened and burnished steel
  - Hardened stainless steel

### Accessories

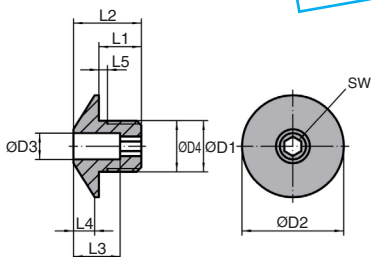
- Compatible with the SDA and SDB locating bolt support bracket (tome 1 p.68-69)
- Compatible with the HPC range of indexing pins.



NEW!



Application example



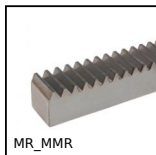
### DISCOUNTS

Qty	1+	6+	20+
Disc.	Price -10%	On request	On request

Part number	ØD	ØD3		ØD4		L5				For	Weight	Price each	
		(+0,1)	ØD2	(-0,05)	L1	L2	L3	L4	(+0,5)				pin diam
<b>Steel</b>													
SDC12F-4	M12X1,5	4,2	24	12	10	16	11	5	1,5	4	4	17	9,49 €
SDC12F-5	M12X1,5	5,2	24	12	10	16	11	5	1,5	5	4	16	9,55 €
SDC12F-6	M12X1,5	6,2	24	12	10	16	11	5	1,5	6	4	16	9,55 €
SDC16F-8	M16X1,5	8,2	32	16	12	20	13	7	1,5	8	6	32	11,46 €
SDC16F-10	M16X1,5	10,2	32	16	12	20	13	7	1,5	10	6	33	11,38 €
SDC16F-12	M16X1,5	12,2	32	16	12	20	13	7	1,5	12	6	33	11,46 €
<b>Stainless steel</b>													
SDC12F-4/SS	M12X1,5	4,2	24	12	10	16	11	5	1,5	4	4	17	12,75 €
SDC12F-5/SS	M12X1,5	5,2	24	12	10	16	11	5	1,5	5	4	16	12,75 €
SDC12F-6/SS	M12X1,5	6,2	24	12	10	16	11	5	1,5	6	4	16	12,75 €
SDC16F-8/SS	M16X1,5	8,2	32	16	12	20	13	7	1,5	8	6	32	18,53 €
SDC16F-10/SS	M16X1,5	10,2	32	16	12	20	13	7	1,5	10	6	33	18,53 €
SDC16F-12/SS	M16X1,5	12,2	32	16	12	20	13	7	1,5	12	6	33	18,53 €

Dimensions in mm

## Our other products



MR\_MMR  
Metric section rack,  
Steel



HBM  
Adjustment bushing  
for half-rail guide,  
Adjustment bushing



RHTtcss  
High Temperature  
Castor, up to 200kg



RURt  
Swivel castor with  
central hole,  
Polyurethane -  
Aluminium rim (Free)



UFX  
Uneflex® elastic  
coupling, range



AC  
Strike for toggle latch,  
12,13,18 and 20mm



BSM  
Spring plunger with  
internal hexagonal  
socket, stainless steel  
303 b...



S20  
Short housing for  
open linear bearing,  
Opened - slim



NCT  
Square tube  
connector, Fixed



CLB\_M  
Die cast zinc clamping  
lever - female, Zamak



BOX-CS  
Hose clamp, Box set  
of steel hose clamps



LVT  
Miniature motorised  
actuator 2A, 2 amperes

## Complementary products



SDCcs  
Positioning sleeve for  
indexing pin, For pin  
Ø4 to Ø12



SDA  
Locking bolt support  
bracket, Mounting  
holes parallel to  
locating bolt



SDB  
Locking bolt support  
bracket, Mounting  
holes at 90° to  
locating bolt



SLB  
Indexing plunger,  
steel class 5.8