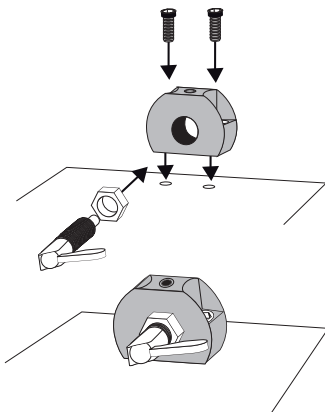
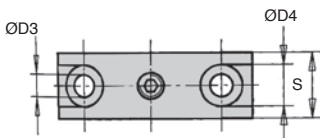
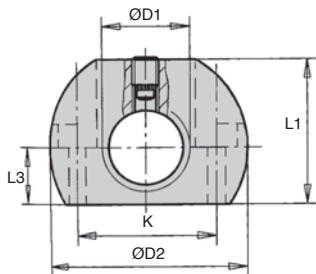


- Use of a support bracket allows locating bolts to be mounted quickly or in different applications.
- Compatible with all types of locating bolts
- Material:
  - Body: blackened steel
  - Screw: brass

Positioned quickly



### DISCOUNTS

Qty	1+	6+	20+
Disc.	List	-10%	On request

Part number	ØD1	ØD2	ØD3	ØD4	K	L1	L3	S	Stock*	Price each 1 to 5
SDB12	M12	36	5,5	10	24	25	10	12	✓	14,97 €
SDB12-F	M12 x 1,5	36	5,5	10	24	25	10	12	✓	14,97 €
SDB16	M16	46	5,5	10	32	33	13	15	✓	14,86 €
SDB16-F	M16 x 1,5	46	5,5	10	32	33	13	15	✓	14,86 €
SDB20	M20	46	5,5	10	32	33	13	15	✓	17,43 €
SDB20-F	M20 x 1,5	46	5,5	10	32	33	13	15	✓	14,45 €

\*Depending on availability - Dimensions in mm

## Our other products



WING  
Manually tightened wing nut, Stainless steel DIN 314/315



BCTH  
Mushroom headed button Hygienic Usit®, With female thread and high ...



SCE  
U-shaped cable clamp, Steel



PW\_PWG1  
Wheel - precision range, Bronze



AT10-32ECO  
AT type timing pulley, Economy range - AT10 aluminium



YG1  
HEAVY DUTY spur gear, Steel 35NCD6



CAP881  
Side flexing slim slat top chain stainless steel, Narrow range 881



PRS50  
Stainless steel articulated foot Ø50, Ø 50



PTA150  
Articulated levelling foot, pressed base Ø150, Ø 150



BDM  
Pin for magnetic bush, Fast and light magnetic locking



MHSC  
Single-disc flexible coupling, Single disk



SDA  
Locking bolt support bracket, Mounting holes parallel to locating bolt

## Complementary products



DIV  
Locking bolt, With grip - Steel



DIL  
Lever operated locking bolt, lever clamp



SDC  
Positioning sleeve for indexing pin, For pin Ø4 to Ø12



SDCcs  
Positioning sleeve for indexing pin, For pin Ø4 to Ø12