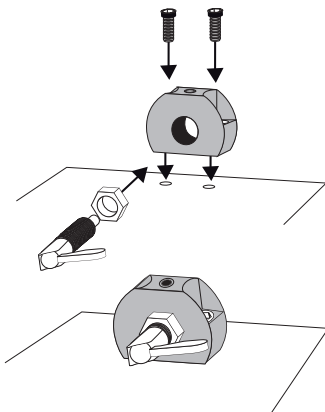
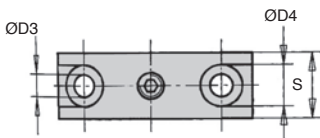
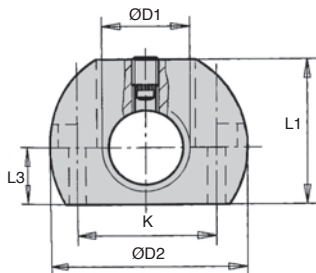


- Use of a support bracket allows locating bolts to be mounted quickly or in different applications.
- Compatible with all types of locating bolts
- Material:
 - Body: blackened steel
 - Screw: brass

Positioned quickly



DISCOUNTS

Qty	1+	6+	20+
Disc.	List	-10%	On request

Part number	ØD1	ØD2	ØD3	ØD4	K	L1	L3	S	Stock*	Price each 1 to 5
SDB12	M12	36	5,5	10	24	25	10	12	✓	14,97 €
SDB12-F	M12 x 1,5	36	5,5	10	24	25	10	12	✓	14,97 €
SDB16	M16	46	5,5	10	32	33	13	15	✓	14,86 €
SDB16-F	M16 x 1,5	46	5,5	10	32	33	13	15	✓	14,86 €
SDB20	M20	46	5,5	10	32	33	13	15	✓	17,43 €
SDB20-F	M20 x 1,5	46	5,5	10	32	33	13	15	✓	14,45 €

*Depending on availability - Dimensions in mm

Our other products



BLHT50

Right angled gearbox, from 11.50 to 30 Nm



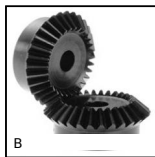
LWH

High rigidity linear slide, Rail - from 9320 N to 71300 N



SEV

Vertical stirrup toggle clamp, Vertical Latch Clamp - steel



B

Steel bevel gear, 1:1



DCG

Suction cup, 2.5 bellows, natural rubber



CHAGC-AL

Screw-in garnet hinge, Screw-on



TAC

Rigging screw (hook/eye), Steel



NT62

Spur gear coaxial gearbox, from 6 to 18 Nm - In-line



FF50

Offset spur gear reducer, from 111 to 1111 Nm



PTCR

Adjustable furniture foot, square tube



CFS

Miniature cam follower, Miniature



PW_PWG3

Worm - precision range, Steel

Complementary products



DIV

Locking bolt, With grip - Steel



DIL

Lever operated locking bolt, lever clamp



SDC

Positioning sleeve for indexing pin, For pin Ø4 to Ø12



SDC_{ss}

Positioning sleeve for indexing pin, For pin Ø4 to Ø12