

- Clamp for steel cable or rope
- Fitting components
- Material:
U bolt + plate: stainless steel

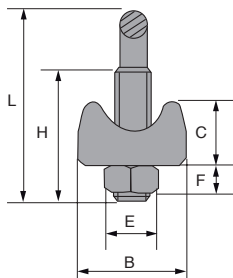
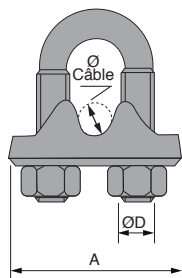
Assembly

- For cables Ø5 to Ø12, use 4 cable clamps
- For cables Ø12 to Ø16, use 5 cable clamps

Info.

- Not sold individually, please contact us for details

stainless steel



The attached end of the cable should be placed next to the plate, the free end next to the curve of the U

DISCOUNTS

Qty	1+	30+	60+	90+	120+	150+
Disc.	List	-5%	-10%	-15%	-20%	On request

Part number	Ø Cable	A	B	C	ØD	E	F	L	L1	Weight per 100 pieces (kg)	Stock*	Price each
												1 to 29
SCE1-05/SS	5	25	18	9	M5	8	5	15	26	2,40	✓	2,62 €
SCE1-06/SS	6	30	19	10	M6	10	5	20	33	3,80	✓	3,51 €
SCE1-08/SS	8	33	20	10	M6	10	5	23	35	4,50	✓	3,67 €
SCE1-10/SS	10	38	22	12	M8	13	6	24	43	7,50	✓	5,71 €
SCE1-12/SS	12	45	25	16	M10	17	8	30	54	13,08	-	9,84 €
SCE1-14/SS	14	46	27	17	M10	17	8	31	56	16,00	-	11,32 €
SCE1-16/SS	16	52	31	17	M9	17	9	31	65	20,00	-	14,54 €

*Depending on availability - Dimensions in mm

Our other products



Screwjack with travelling nut, with moving nut



Shaft for linear guides, Hardened ground stainless steel



Articulated fixable foot, pressed bolt-down base Ø 120, Ø 120



HTD Heavy duty timing pulley, HTD3 Aluminium



Spur gear - precision range, Pre-hardened Steel 35NCD6



Stainless steel Dee shackle with eye bolt, Stainless steel



Stainless steel articulated foot Ø100, Ø 100



Fixed castor with plate, Steel - rubber



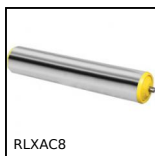
Ball transfer unit plain fit, High



Anti-vibration machine mount, Oval

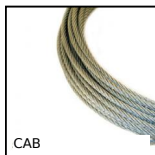


Stainless steel shoulder screw



Free roller, Steel

Complementary products



Stainless steel cable, Stainless steel



Stainless steel wire thimble, Stainless steel



Pad eye on mounting plate oval, Stainless steel



U-shaped cable clamp, Steel