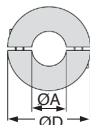
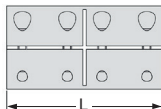


- Rigid coupling for applications without alignment errors
- Dependable torque transfer
- No backlash
- Easy to dismantle
- 8 locking screws supplied
- No risk of shaft damage
- Materials:
 - Steel
 - Stainless steel

stainless steel
or steel



Info.

- Replaces the SC range

DISCOUNTS Stainless steel

Qty	1+	6+	10+
Disc.	List	-15%	On request

DISCOUNTS steel

Qty	1+	6+	20+	40+
Disc.	List	-15%	-20%	On request

Part number	ØA	ØD	L	Fixing screws	Max torque	Stock*	Price each 1 to 9
Steel							
SC2-6	6	18	30	M3x8	30	✓	41,85 €
SC2-8	8	24	35	M3x10	50	✓	48,84 €
SC2-10	10	29	45	M4x12	100	✓	55,01 €
SC2-12	12	29	45	M4x12	100	✓	55,01 €
SC2-14	14	34	50	M5x16	190	✓	61,88 €
SC2-15	15	34	50	M5x16	190	✓	59,64 €
SC2-16	16	35	50	M5x16	190	✓	57,75 €
SC2-20	20	42	65	M6x16	350	✓	67,72 €
SC2-25	25	45	75	M6x16	390	✓	71,63 €
SC2-30	30	53	83	M6x18	475	✓	99,37 €
SC2-35	35	67	95	M8x25	1100	-	117,07 €
SC2-40	40	77	108	M8x25	1325	✓	158,94 €
SC2-50	50	85	124	M10x25	2250	-	205,23 €
Stainless steel							
SC2-6/SS	6	18	30	M3x8	25	✓	66,40 €
SC2-8/SS	8	24	35	M3x10	40	✓	67,72 €
SC2-10/SS	10	29	45	M4x12	90	✓	82,05 €
SC2-12/SS	12	29	45	M4x12	90	✓	96,02 €
SC2-14/SS	14	34	50	M5x16	160	-	109,96 €
SC2-15/SS	15	34	50	M5x16	160	✓	109,96 €
SC2-16/SS	16	35	50	M5x16	160	-	112,56 €
SC2-20/SS	20	42	65	M6x16	300	✓	149,46 €
SC2-25/SS	25	45	75	M6x16	325	✓	158,94 €
SC2-30/SS	30	53	83	M6x18	400	-	237,25 €
SC2-35/SS	35	67	95	M8x25	925	-	325,08 €
SC2-40/SS	40	77	108	M8x25	1100	-	455,59 €
SC2-50/SS	50	85	124	M10x25	1875	-	555,26 €

*Subject to availability - Dimensions in mm

Our other products



FBL4004_K7

Brush strip per meter
PA6 fibres Ø0.3 to
Ø0.5, Black polyamide
6 -...



PF70

Worm and wheel gear
reducer, up to 164
Nm



DFG

Flat suction cup,
silicon



HTD8M_20

HTD Heavy duty
timing pulley, HTD8
Cast



ARTE

Flexible bush, For
multi-directional loads



PR105

Articulated foot Ø103,
Ø 103



TS01_TW01

Drylin® T linear slide,
up to 7000 N



VDSQ

Sliding lock
adjustment system,
Sliding lock for square
profile



CHAC4040SS

Square hinge with
riveted pin, drilled,



NK17

Drylin®N miniature
guiding system, Width



BAB

Hardened Stainless
steel ball pin,



CDC

Conical compression
spring, Conical

Complementary products



SC2

2 part rigid shaft
clamp, Clamping jaw