

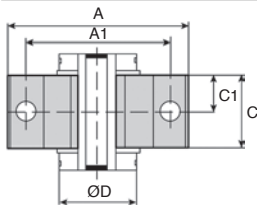
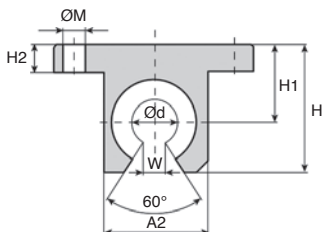
- Open housing for open bearing
- Bearing not supplied
- Material : Aluminium

Options

- Compatible with KB-OP and TK-OP ranges

Advantages

- Use with long supported shafts to avoid flexing.



DISCOUNTS

Qty	1+	5+	10+	25+
Disc.	List	-6%	-12%	On request

Part number	For shaft					
	Ød	ØD	H	C	A	A1 ±0.015
S2O12	12	22	28,0	20	52	42
S2O16	16	26	33,5	22	56	46
S2O20	20	32	42,0	28	70	58
S2O25	25	40	51,0	40	80	68
S2O30	30	47	60,0	48	88	76
S2O40	40	62	77,0	56	108	94
S2O50	50	75	93,0	72	135	116

Part number	C1	H1 ±0.015	H2	W	A2	ØM	Price
							each 1 to 4
S2O12	10	18	6	7,0	30	5,3	On request
S2O16	11	22	7	9,4	34	5,3	43,11 €
S2O20	14	25	8	10,0	40	6,4	45,05 €
S2O25	20	30	10	12,5	50	6,4	58,91 €
S2O30	24	35	10	12,5	58	6,4	79,92 €
S2O40	28	45	12	16,8	74	8,4	100,86 €
S2O50	36	50	12	21,0	96	10,5	141,95 €

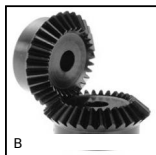
*Depending on availability - Dimensions in mm

Our other products



SRG

Adjustable latch clamp with strike plate, Stroke from 96mm to 121,7mm



B

Steel bevel gear, 1:1



SDC_{ss}

Positioning sleeve for indexing pin, For pin Ø4 to Ø12



DCG

Suction cup, 2.5 bellows, natural rubber



DILC

Indexing plunger with cam, with cam



MSP3815

Masterplate® glueable insert rectangular, rectangular with



BPTR

End cap for round tube, Standard



PR880

Idler sprocket for slat top chain, Range 880



SDG

Adjustable guide support bracket, Plastic



PO

Pull handle - Multi-sector, Tapped recessed insert



ADSR

Backlash free coupling Gerwah®, from 12.5 to 525Nm



BAB_{ps}

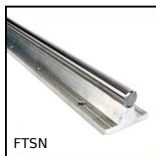
301 Stainless steel ball pin, Stainless steel

Complementary products



KB_OP

Open precision linear bearing, Precision - steel



FTSN

Supported shaft for linear guide, Steel shaft / Aluminium support



NSO

Housing for open linear bearing, Opened - long



TK_UUOP

Topball self-aligning linear bearing, Topball self-aligning