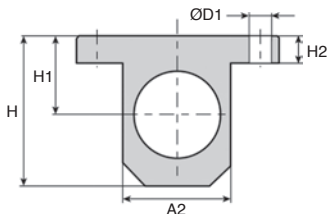
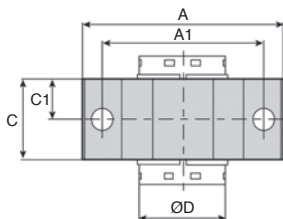


- Housing for closed bearing
- Bearing not supplied
- Material : Aluminium

Options

- Compatible with **KB, TK and RJUM** ranges



Typical application

DISCOUNTS

Qty	1+	5+	10+	25+
Disc.	List	-6%	-12%	On request

Part number	For shaft Ød	ØD	H	C	A	A1 +/-0.15	C1	H1 +/-0.015	H2	A2	ØD1	Stock*	Price each 1 to 4
S2B12	12	22	35,0	20	52	42	10	18	6	30	5,3	✓	23,94 €
S2B16	16	26	40,5	22	56	46	11	22	7	34	5,3	✓	27,09 €
S2B20	20	32	48,0	28	70	58	14	25	8	40	6,4	✓	29,17 €
S2B25	25	40	58,0	40	80	68	20	30	10	50	6,4	✓	37,50 €
S2B30	30	47	67,0	48	88	76	24	35	10	58	6,4	✓	47,94 €
S2B40	40	62	85,0	56	108	94	28	45	12	74	8,4	-	58,38 €
S2B50	50	75	100,0	72	135	116	36	50	12	96	10,5	-	86,53 €

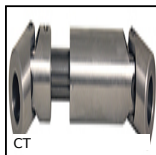
*Depending on availability - Dimensions in mm

Our other products



PWC

Powercoil thread inserts, Kit Powercoil - with or without insertion ...



CT

Telescopic universal joint, Normal duty



DOMI120

Accessories, Fixing kit



SHS

Shoulder screw stainless steel 303, Stainless steel 303



KSTM

Igubal® pillow block bearing, Polymer



CHA1056-UPA

Molded polyamide face-mounted hinge, Black polyamide



T10courroie

T type timing belt, T10 Steel cored polyurethane



CHB

Feet, For CHB gearbox



BCH_SS

Mushroom headed button, M3 to M8



DOMI30

Domino 30 adjustable slide, Slide DOMILINE 30



V3RA_PT

3-spoked handwheel with handle, Polyamide



J51

Spur gear coaxial gearbox, from 0.13 to 0.49 Nm - In-line

Complementary products



KB_UU

Closed linear precision bearing, Precision - steel



ZB

Shaft for linear guides, Hardened ground stainless steel



KKB-AR

Linear bearing with inclined ball tracks, Standard loads / -20° +20...



KKP-AR

Linear bearing with inclined ball tracks, Heavy loads / -20° +20°