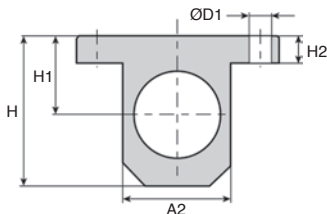
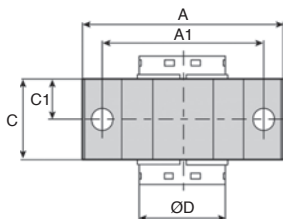


- Housing for closed bearing
- Bearing not supplied
- Material : Aluminium

Options

- Compatible with **KB, TK and RJUM** ranges



Typical application

DISCOUNTS

Qty	1+	5+	10+	25+
Disc.	List	-6%	-12%	On request

Part number	For shaft Ød	ØD	H	C	A	A1 +/-0.15	C1	H1 +/-0.015	H2	A2	ØD1	Stock*	Price each 1 to 4
S2B12	12	22	35,0	20	52	42	10	18	6	30	5,3	✓	23,94 €
S2B16	16	26	40,5	22	56	46	11	22	7	34	5,3	✓	27,09 €
S2B20	20	32	48,0	28	70	58	14	25	8	40	6,4	✓	29,17 €
S2B25	25	40	58,0	40	80	68	20	30	10	50	6,4	✓	37,50 €
S2B30	30	47	67,0	48	88	76	24	35	10	58	6,4	✓	47,94 €
S2B40	40	62	85,0	56	108	94	28	45	12	74	8,4	-	58,38 €
S2B50	50	75	100,0	72	135	116	36	50	12	96	10,5	-	86,53 €

*Depending on availability - Dimensions in mm

Our other products



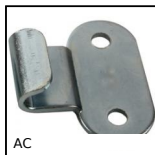
GLT3E-58
Telescopic drawer,



BPM_LOK
Long-Lok slotted
spring plunger with
ball tip, LONG-LOK -
Steel



HBM
Adjustment bushing
for half-rail guide,
Adjustment bushing



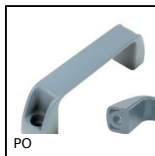
AC
Strike for toggle latch,
20mm



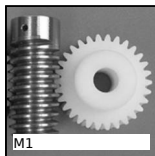
MDB_MTB
Moulded plastic bevel
gear (nylon), 2:1



BCA
Steel splined collar,
Steel



PO
Pull handle - Multi-
sector, Smooth hole



M1
Worm and wheel set,
Machined plastic
(delrin)



COA-COG
Surface mounting
plate, Surface



PRES2HR
Manual workbench
press, Force up to
2000N



BZY
Cylindrical elasto
mount, Steel



SHA
Handwheel without
handle, Polyamide

Complementary products



KB_UU
Closed linear
precision bearing,
Precision - steel



ZB
Shaft for linear
guides, Hardened
ground stainless steel



KKB-AR
Linear bearing with
inclined ball tracks,
Standard loads / -20°
+20...



KKP-AR
Linear bearing with
inclined ball tracks,
Heavy loads / -20°
+200°