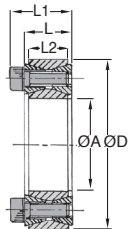


- Inserts between the shaft and the bore
- High transmissible torque
- Contact pressure spread evenly
- Easy to assembly and dismantle
- Reduced width
- Backlash free
- **No constraints due to keyway**
- Increases the resistant part of the shaft
- Suitable for alternating movement
- Up to 4 units can be used together
- Material

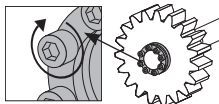
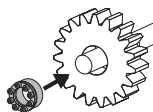
Stainless steel

Info.

- **PN : hub surface pressure
- **Pw : shaft surface pressure



Stainless steel



REMISES

Qty	1+	2+	5+
Disc.	List	-5%	On request

Part number	ØA	ØD	L1	L	L2	Screw M	Tightening torque		**Pw (N/mm²)	**PN (N/mm²)	Stock*	Price each
							TA (Nm)	T (Nm)				
RTT20-47/SS	20	47	26	20	17	8xM6x18	8	110	133	57		52,98 €
RTT22-47/SS	22	47	26	20	17	8xM6x18	8	120	131	57		53,55 €
RTT24-50/SS	24	50	26	20	17	9xM6x18	8	150	125	60		55,35 €
RTT25-50/SS	25	50	26	20	17	9xM6x18	8	155	120	60		54,48 €
RTT28-55/SS	28	55	26	20	17	9xM6x18	8	170	107	55		58,30 €
RTT30-55/SS	30	55	26	20	17	9xM6x18	8	185	100	55		57,45 €
RTT32-60/SS	32	60	26	20	17	12xM6x18	8	265	125	66		62,73 €
RTT35-60/SS	35	60	26	20	17	12xM6x18	8	290	114	67		62,83 €
RTT38-65/SS	38	65	26	20	17	15xM6x18	8	390	131	77		72,48 €
RTT40-65/SS	40	65	26	20	17	15xM6x18	8	410	125	77		71,75 €
RTT42-75/SS	42	75	32	24	20	12xM8x22	18	595	138	78		93,45 €
RTT45-75/SS	45	75	32	24	20	12xM8x22	18	635	129	78		91,05 €
RTT48-80/SS	48	80	32	24	20	12xM8x22	18	680	121	73		105,73 €
RTT50-80/SS	50	80	32	24	20	12xM8x22	18	700	116	73		113,10 €

*Depending on availability - Dimensions in mm

Our other products



PM3

Worm and wheel set,
Hardened steel



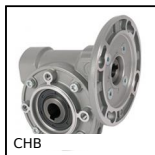
PLC_PLT

Magnetic stud with
central hole, With
central hole



SC2

2 part rigid shaft
clamp, Clamping jaw



CHB

Worm and wheel gear
reducer, up to 41 Nm



ALIDRP240

24V DC power supply,
10 A



PLM-C

Flat gripping magnet,
Flat holding magnet



RBN

Wheel, Rubber tyre -
Polypropylene rim



PRF-SMA

Closing system for
aluminium profile,
Easily adjustable lock



ACLBT5

Spherical ended stop
for aluminium profile,



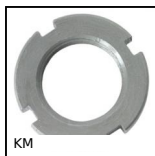
SHA_PTR

Handwheel with
folding handle,



DOMI_MD

Domino rotary table,
40/1



KM

Bearing locknut,
Locknut KM

Complementary products



RT61

Self-centering locking
Assembly,
Medium/low torque



RT61ss

Self-centering locking
Assembly,
Medium/low torque



RT25ss

Self-centering flanged
locking assembly,
Medium/high torque



RTT

Locking Assembly,
Medium/high torque