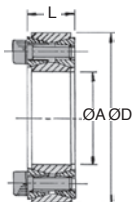


# Locking assembly



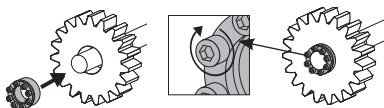
**RTT** Medium/high torque, not self-centering

- Inserts between the shaft and the bore
- High transmissible torque
- Contact pressure spread evenly
- Easy to assemble and dismantle
- Reduced width
- Backlash free
- **No constraints due to keyway**
- Increases the resistant part of the shaft
- Suitable for alternating rotational movements
- Up to 4 units can be used together
- Materials:  
Body: steel  
Screws: steel DIN 912 12.9



## Options

- Other diameters available (up to 220mm bore)
- Stainless steel version



## Info

- \*\*P<sub>N</sub>: hub surface pressure
- \*\*P<sub>w</sub>: shaft surface pressure

## DISCOUNTS

Qty	1+	6+	20+	40+	60+	100+
Disc.	List	-10%	-15%	-20%	-25%	On request

Part number	ØA	ØD	L	H	Screw M	Tightening torque TA(Nm)	Transmissible torque T (Nm)	**P <sub>w</sub> (N)	mm <sup>2</sup> ØD	(**P <sub>N</sub> ) (N/mm <sup>2</sup> )	Price each 1 to 5
RTT-20-47	20	47	20	28	8xM6x18	14	270	210	90	✓	15,25 €
RTT-22-47	22	47	20	28	8xM6x18	14	300	195	90	✓	15,25 €
RTT-24-50	24	50	20	28	9xM6x18	14	360	195	95	✓	15,64 €
RTT-25-50	25	50	20	28	9xM6x18	14	380	190	85	✓	15,64 €
RTT-28-55	28	55	20	28	10xM6x18	14	500	187	96	-	17,46 €
RTT-30-55	30	55	20	28	10xM6x18	14	530	176	96	✓	17,46 €
RTT-32-60	32	60	20	28	12xM6x18	14	630	192	105	✓	19,17 €
RTT-35-60	35	60	20	28	12xM6x18	14	700	180	105	✓	19,17 €
RTT-38-65	38	65	20	28	14xM6x18	14	860	183	107	-	21,11 €
RTT-40-65	40	65	20	28	14xM6x18	14	910	180	110	✓	21,11 €
RTT-42-75	42	75	24	34	12xM8x22	35	1500	226	125	-	26,41 €
RTT-45-75	45	75	24	34	12xM8x22	35	1610	210	125	-	26,41 €
RTT-48-80	48	80	24	34	12xM8x22	35	1700	196	115	-	28,00 €
RTT-50-80	50	80	24	34	12xM8x22	35	1770	190	115	✓	28,00 €
RTT-55-85	55	85	24	34	14xM8x22	35	2270	200	130	-	30,74 €
RTT-60-90	60	90	24	34	14xM8x22	35	2470	180	120	✓	32,51 €
RTT-65-95	65	95	24	34	16xM8x22	35	3040	190	130	✓	35,39 €
RTT-70-110	70	110	28	40	14xM10x25	70	4600	210	130	-	46,85 €
RTT-75-115	75	115	28	40	14xM10x25	70	4900	195	125	-	50,99 €
RTT-80-120	80	120	28	40	14xM10x25	70	5200	180	120	-	53,61 €
RTT-85-125	85	125	28	40	16xM10x25	70	6300	195	130	-	57,04 €
RTT-90-130	90	130	28	40	16xM10x25	70	6600	180	125	-	57,26 €
RTT-95-135	95	135	28	40	18xM10x25	70	7900	195	135	-	62,99 €
RTT-100-145	100	145	33	47	14xM12x30	125	9600	195	135	-	75,16 €

\*Depending on availability - Dimensions in mm

## Our other products



Magnetic doorstop for aluminium profile, Magnetic doorstop



Technopolymer clamping lever - female, Plastic



Worm and wheel set, Machined plastic (delrin)



Screw-in garnet hinge, Screw-on



H Type Guide units, For Ø25 actuators



Accessories, Fixing kit



Adjustable cross clamp, Adjustable



Worm and wheel gear reducer, up to 3,75 Nm



Dowel pin, Solid DIN 6325



Rounded end feather key, Stainless steel



Piano hinge, Steel



Invisible hinge, Invisible - Opening up to 125°

## Complementary products



Self-centering flanged locking assembly, Medium/high torque



Self-centering locking Assembly, Medium/high torque



Self-centering locking Assembly, Medium/low torque



Self-centering locking Assembly, Medium/low torque