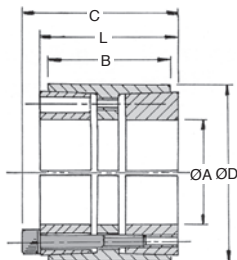


- Inserts between the shaft and the bore
- High transmissible torque
- Contact pressure spread evenly
- Easy to assembly and dismantle
- Reduced width
- Backlash free
- No constraints due to keyway
- **Increases the resistant part of the shaft**
- Suitable for alternating rotational movements
- Up to 3 units can be used together
- Material:
Steel

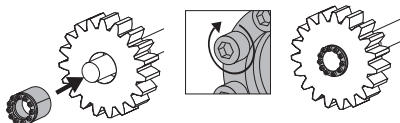


Options

- Other diameters available (up to 300mm bore)

Info.

- *PN: hub surface pressure
- *PW: shaft surface pressure



DISCOUNTS

Qty	1+	6+	20+	40+	60+	100+
Disc.	List	-10%	-15%	-20%	-25%	On request

Part number	ØA	ØD	B	L	C	Screw M	Tightening torque TA (Nm)	Transmissible torque + axial load T (Nm)	*PW (N/mm²)	*PN (N/mm²)	Price	
											Stock*	each 1 to 5
RTL450-25-55	25	55	32	40	46	6xM6x35	17	295	295	134	✓	26,97 €
RTL450-30-55	30	55	32	40	46	6xM6x35	17	246	246	134	✓	27,72 €
RTL450-35-60	35	60	44	54	60	7xM6x45	17	174	174	101	✓	33,72 €
RTL450-38-75	38	75	44	54	62	7xM8x50	41	296	296	150	✓	42,08 €
RTL450-40-75	40	75	44	54	62	7xM8x50	41	281	281	150	✓	42,08 €
RTL450-42-75	42	75	44	54	62	7xM8x50	41	268	268	150	-	45,51 €
RTL450-45-75	45	75	44	54	62	7xM8x50	41	250	250	150	-	45,51 €
RTL450-48-80	48	80	44	54	62	8xM8x50	41	207	207	124	✓	52,48 €
RTL450-50-80	50	80	56	64	72	8xM8x50	41	200	200	98	✓	52,48 €
RTL450-55-85	55	85	56	64	72	9xM8x50	41	205	205	104	✓	59,44 €
RTL450-60-90	60	90	56	64	72	10xM8x50	41	202	202	106	✓	63,93 €
RTL450-65-95	65	95	56	64	72	10xM8x50	41	187	187	100	✓	70,17 €
RTL450-70-110	70	110	70	78	88	10xM10x60	83	223	223	114	✓	95,72 €
RTL450-75-115	75	115	70	78	88	10xM10x60	83	223	223	114	✓	103,71 €
RTL450-80-120	80	120	70	78	88	11xM10x60	83	215	215	115	✓	110,42 €
RTL450-85-125	85	125	70	78	88	12xM10x60	83	215	215	115	-	118,38 €
RTL450-90-130	90	130	70	78	88	12xM10x60	83	208	208	115	-	122,02 €
RTL450-95-135	95	135	70	78	88	12xM10x60	83	208	208	115	-	138,00 €
RTL450-100-145	100	145	90	100	112	11xM12x80	145	200	200	107	-	185,35 €

*Depending on availability - Dimensions in mm

Our other products



PR40

Articulated foot Ø40,
Ø 40



ABL100005

Antistatic brush,
Standard



SSB

Stainless steel bevel
gear, 1:1



EMS

Stainless steel knurled
thumb nut, Knurled



VTHbr

Hexagonal headed
screw VTH - DIN933,
Brass



PRF_PL_9090

Joining plate for
aluminium profile,
Joint plate - 90x90
mm



LC

Friction clutch, 190 to
1800 Nm



BLM

Spring loaded plunger
with ball tip, Stainless
steel body



J53

Spur gear coaxial
gearbox, from 0.43 to



KM

Bearing locknut,
Locknut KM



UTKpwcr

Utilitrac® 3 wheels
carriage, Polymer



PRF_VTM

Hammerhead screw,
Hammerhead screw

Complementary products



RT70

Self-centering locking
Assembly,
Medium/high torque



RT25

Self-centering flanged
locking assembly,
Medium/high torque



RT61

Self-centering locking
Assembly,
Medium/low torque



RT61ss

Self-centering locking
Assembly,
Medium/low torque