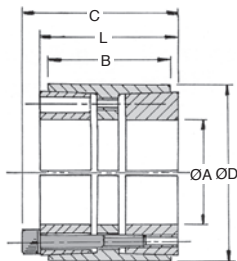


- Inserts between the shaft and the bore
- High transmissible torque
- Contact pressure spread evenly
- Easy to assembly and dismantle
- Reduced width
- Backlash free
- No constraints due to keyway
- **Increases the resistant part of the shaft**
- Suitable for alternating rotational movements
- Up to 3 units can be used together
- Material: Steel

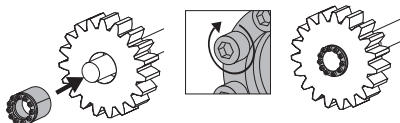


Options

- Other diameters available (up to 300mm bore)

Info.

- *PN: hub surface pressure
- *PW: shaft surface pressure



DISCOUNTS

Qty	1+	6+	20+	40+	60+	100+
Disc.	List	-10%	-15%	-20%	-25%	On request

Part number	ØA	ØD	B	L	C	Screw M	Tightening torque TA (Nm)	Transmissible torque + axial load T (Nm)	*PW (N/mm²)	*PN (N/mm²)	Price each 1 to 5
RTL450-25-55	25	55	32	40	46	6xM6x35	17	295	295	134	✓ 26,97 €
RTL450-30-55	30	55	32	40	46	6xM6x35	17	246	246	134	✓ 27,72 €
RTL450-35-60	35	60	44	54	60	7xM6x45	17	174	174	101	✓ 33,72 €
RTL450-38-75	38	75	44	54	62	7xM8x50	41	296	296	150	✓ 42,08 €
RTL450-40-75	40	75	44	54	62	7xM8x50	41	281	281	150	✓ 42,08 €
RTL450-42-75	42	75	44	54	62	7xM8x50	41	268	268	150	- 45,51 €
RTL450-45-75	45	75	44	54	62	7xM8x50	41	250	250	150	- 45,51 €
RTL450-48-80	48	80	44	54	62	8xM8x50	41	207	207	124	✓ 52,48 €
RTL450-50-80	50	80	56	64	72	8xM8x50	41	200	200	98	✓ 52,48 €
RTL450-55-85	55	85	56	64	72	9xM8x50	41	205	205	104	✓ 59,44 €
RTL450-60-90	60	90	56	64	72	10xM8x50	41	202	202	106	✓ 63,93 €
RTL450-65-95	65	95	56	64	72	10xM8x50	41	187	187	100	✓ 70,17 €
RTL450-70-110	70	110	70	78	88	10xM10x60	83	223	223	114	✓ 95,72 €
RTL450-75-115	75	115	70	78	88	10xM10x60	83	223	223	114	✓ 103,71 €
RTL450-80-120	80	120	70	78	88	11xM10x60	83	215	215	115	✓ 110,42 €
RTL450-85-125	85	125	70	78	88	12xM10x60	83	215	215	115	- 118,38 €
RTL450-90-130	90	130	70	78	88	12xM10x60	83	208	208	115	- 122,02 €
RTL450-95-135	95	135	70	78	88	12xM10x60	83	208	208	115	- 138,00 €
RTL450-100-145	100	145	90	100	112	11xM12x80	145	200	200	107	- 185,35 €

*Depending on availability - Dimensions in mm

Our other products



SLHHlok

Horizontal toggle clamp, Horizontal toggle clamp / horizontal foot



DER71

Stainless steel AC asynchronous motor 0.25 à 0.37kW, 0.25 to 0.37kW



HG8-ECO

Eco range Spur gear, Steel C45



BCA

Steel splined collar, Steel



VCMB

Dual-thread screw wood/metal, Stainless steel



D-PAR_SS

Stainless steel elastomeric mount, stainless steel



ACM_TRI

Manual bonnet fastener, Black rubber fastener



EHD16

Internal epicyclic servo reducers, from 210 to 380 Nm



PCS37K

Chain sprocket with hardened teeth, 9.525mm (DIN06B-1)



STC

Shock Absorber - stop collar, Universal flange



PW_PWG15

Wheel - precision range, Bronze



PTAF100-PAMF100

Articulated fixable foot with pressed base Ø100, Ø 100

Complementary products



RT70

Self-centering locking Assembly, Medium/high torque



RT25

Self-centering flanged locking assembly, Medium/high torque



RT61

Self-centering locking Assembly, Medium/low torque



RT61ss

Self-centering locking Assembly, Medium/low torque