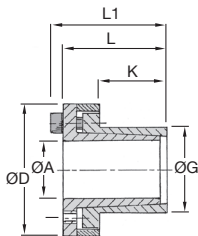


RT25ss

Torque **medium/high**

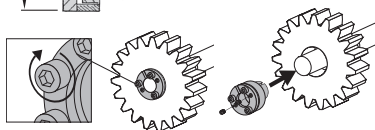
- Inserts between the shaft and the bore
- High transmissible torque
- Contact pressure spread evenly
- Easy to assembly and dismantle
- Reduced width
- Backlash free
- **No constraints due to keyway**
- Increases the resistant part of the shaft
- Suitable for alternating rotational movement
- Material
Stainless steel



Stainless steel

Info.

- **PN : hub surface pressure
- **Pw : shaft surface pressure



DISCOUNTS

| Qty | 1+ | 2+ | 5+ |
|-------|------|-----|------------|
| Disc. | List | -5% | On request |

| Part number | ØA | ØG | ØD | L1 | L | K | Screw M | Tightening | | Transmissible | | **Pw (N/mm ²) | **PN (N/mm ²) | Stock* | Price each |
|---------------|----|----|----|----|----|----|---------|----------------|---------------|----------------|---------------|---------------------------|---------------------------|--------|------------|
| | | | | | | | | torque TA (Nm) | torque T (Nm) | torque TA (Nm) | torque T (Nm) | | | | |
| RT25-10-16/SS | 10 | 16 | 29 | 31 | 27 | 14 | 4xM4x12 | 2 | 22 | 82 | 51 | - | 33,28 € | | |
| RT25-12-18/SS | 12 | 18 | 32 | 32 | 28 | 14 | 4xM4x12 | 2 | 26 | 69 | 46 | - | 33,28 € | | |
| RT25-14-23/SS | 14 | 23 | 38 | 32 | 28 | 14 | 4xM4x12 | 2 | 30 | 59 | 36 | - | 38,65 € | | |
| RT25-15-24/SS | 15 | 24 | 44 | 43 | 37 | 16 | 4xM6x18 | 8 | 73 | 107 | 67 | - | 53,43 € | | |
| RT25-16-24/SS | 16 | 24 | 44 | 43 | 37 | 16 | 4xM6x18 | 8 | 78 | 101 | 67 | - | 53,50 € | | |
| RT25-18-26/SS | 18 | 24 | 47 | 45 | 39 | 18 | 4xM6x18 | 8 | 87 | 79 | 55 | - | 50,98 € | | |
| RT25-19-27/SS | 19 | 27 | 49 | 45 | 39 | 18 | 4xM6x18 | 8 | 92 | 75 | 53 | - | 51,60 € | | |
| RT25-20-28/SS | 20 | 28 | 50 | 45 | 39 | 18 | 4xM6x18 | 8 | 97 | 71 | 51 | - | 55,58 € | | |
| RT25-22-32/SS | 22 | 32 | 54 | 52 | 46 | 25 | 4xM6x18 | 8 | 105 | 47 | 32 | - | 62,18 € | | |
| RT25-24-34/SS | 24 | 34 | 56 | 52 | 46 | 25 | 6xM6x18 | 8 | 175 | 64 | 45 | - | 72,08 € | | |
| RT25-25-34/SS | 25 | 34 | 56 | 52 | 46 | 25 | 6xM6x18 | 8 | 180 | 62 | 45 | - | 65,55 € | | |
| RT25-28-39/SS | 28 | 39 | 61 | 52 | 46 | 25 | 6xM6x18 | 8 | 200 | 55 | 40 | - | 74,68 € | | |
| RT25-30-41/SS | 30 | 41 | 62 | 52 | 46 | 25 | 6xM6x18 | 8 | 220 | 51 | 38 | - | 61,18 € | | |
| RT25-32-43/SS | 32 | 43 | 65 | 52 | 46 | 25 | 8xM6x18 | 8 | 310 | 64 | 48 | - | 93,45 € | | |
| RT25-35-47/SS | 35 | 47 | 66 | 59 | 53 | 32 | 8xM6x18 | 8 | 340 | 46 | 34 | - | 99,53 € | | |
| RT25-38-50/SS | 38 | 50 | 72 | 59 | 53 | 32 | 8xM6x18 | 8 | 370 | 42 | 32 | - | 107,83 € | | |
| RT25-40-53/SS | 40 | 53 | 75 | 59 | 53 | 32 | 8xM6x18 | 8 | 390 | 40 | 30 | - | 127,93 € | | |
| RT25-42-55/SS | 42 | 55 | 78 | 59 | 53 | 32 | 8xM6x18 | 8 | 410 | 39 | 29 | - | 129,43 € | | |
| RT25-45-59/SS | 45 | 59 | 86 | 78 | 70 | 45 | 8xM8x22 | 18 | 820 | 48 | 36 | - | 172,03 € | | |
| RT25-48-62/SS | 48 | 62 | 87 | 78 | 70 | 45 | 8xM8x22 | 18 | 880 | 45 | 35 | - | 186,15 € | | |
| RT25-50-65/SS | 50 | 65 | 92 | 78 | 70 | 45 | 8xM8x22 | 18 | 910 | 43 | 33 | - | 206,10 € | | |

*Depending on availability - Dimensions in mm

Our other products



CHM75

Worm and wheel gear reducer, up to 298 Nm



CFS

Miniature cam follower, Miniature



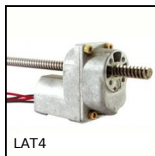
T5P_T10P

Connecting plate for T type timing belts, T10



TS01_TW01

Drylin® T linear slide, up to 7000 N



LAT4

4A motorised linear actuator, 4 amperes



WING

Manually tightened wing nut, Steel (ANSI B18-17)



ETP

Modular handle for aluminium profile, Modular handle



E30

Right angle helical reducers, from 1.50 to 9 Nm



GARQT

Quarter turn lock pin for clamping, Quarter



SBS_L

Chain link, Stainless steel



H1

Crossed helical gear crossed axis at 90°,



SMLS

Linear table, For small lengths

Complementary products



RT61

Self-centering locking Assembly, Medium/low torque



RT61ss

Self-centering locking Assembly, Medium/low torque



RTT

Locking Assembly, Medium/high torque



RTTss

Locking assembly, Medium/high torque