

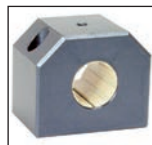
RJUM05 RJUM06

Unaffected by dirt

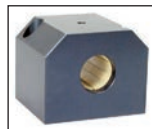
- Housing for closed bearing
- Two versions available: short (RJUM05) or long (RJUM06)
- Interchangeable with standard bearing housings
- Easy to use
- Recommended tolerance: h7
- Material:

Housing: Aluminium
Liner: iglidur® J

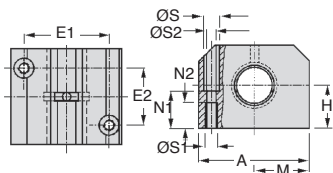
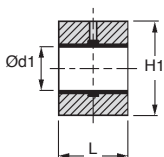
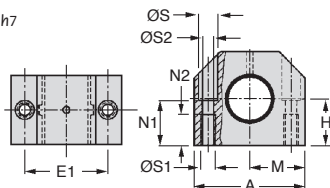
Fast and silent



RJUM05



RJUM06



Until
-35%*

DISCOUNTS

Qty	1+	6+	20+	40+	60+
Disc.	List	-10%	-15%	-20%	On request

Part number	Ød1	Tolerance	H	H1	A	M	E1	E2	ØS	ØS1	ØS2	N1	N2	L	Price
															each
Short version															1 to 5
RJUM05-12	12	0,02 / 0,05	17	33	40	20,0	29	-	8	M5	4,3	16	11	28	57,00 €
RJUM05-16	16	0,02 / 0,05	19	38	45	22,5	34	-	18	M5	4,3	18	11	30	57,16 €
RJUM05-20	20	0,02 / 0,06	23	45	53	26,5	40	-	19,5	M6	5,3	22	13	30	64,15 €
RJUM05-25	25	0,02 / 0,06	27	54	62	31,0	48	-	11	M8	6,6	26	18	40	66,96 €
RJUM05-30	30	0,03 / 0,07	30	60	67	33,5	53	-	11	M8	6,6	29	18	50	76,48 €
RJUM05-40	40	0,03 / 0,07	39	76	87	43,5	69	-	14	M10	8,4	38	22	60	99,85 €
RJUM05-50	50	0,04 / 0,09	47	92	103	51,5	82	-	19	M12	10,5	46	26	70	135,54 €
Long version															
RJUM06-12	12	0,02 / 0,05	18	35	43	21,5	32	23	8	M5	4,3	16,5	11	39	67,94 €
RJUM06-16	16	0,02 / 0,05	22	42	53	26,5	40	26	10	M6	5,3	21	13	43	75,54 €
RJUM06-20	20	0,02 / 0,06	25	50	60	30,0	45	32	11	M8	6,6	24	18	54	81,36 €
RJUM06-25	25	0,02 / 0,06	30	60	78	39,0	60	40	15	M10	8,4	29	22	67	91,08 €
RJUM06-30	30	0,03 / 0,07	35	70	87	43,5	68	45	15	M10	8,4	34	22	79	99,43 €
RJUM06-40	40	0,03 / 0,07	45	90	108	54,0	86	58	18	M12	10,5	44	26	91	115,81 €
RJUM06-50	50	0,04 / 0,09	50	105	132	66,0	108	50	20	M16	13,5	49	34	113	223,97 €

Dimensions in mm

Our other products



CHM40

Worm and wheel gear reducer, up to 57 Nm



MFBSC

Stainless steel flexible bellows coupling, Stainless steel - with cl...



CMM

Male rod ends DIN ISO12240-4, Steel / bronze



AT5P_AT10P

Connecting plate for AT type timing belts, AT5



UCF

Cast iron flange bearing unit, Cast iron



ACL-PLAngle

Joining plate for aluminium profile, Angle connection



PLA

Flat magnet, Flat magnet with threaded hole



GTCCS

Belt tensioner, For use in hostile environments



M1

Worm and wheel set, Machined plastic (delrin)



GG1

Ground spur gear, Heat treated steel



PLM-20SC

Cylindrical magnet, Cylindrical magnet



AT5M_AT10M

AT type timing belt per metre, AT10 Steel cored polyurethane

Complementary products



RJUM05

Drylin R® linear bearing housing, Closed - Slim



AWMP

Aluminium shaft for linear guide, Aluminium