

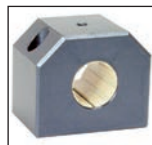
## RJUM05 RJUM06

Unaffected by dirt

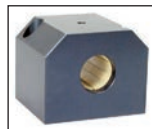
- Housing for closed bearing
- Two versions available: short (RJUM05) or long (RJUM06)
- Interchangeable with standard bearing housings
- Easy to use
- Recommended tolerance: h7
- Material:

Housing: Aluminium  
Liner: iglidur® J

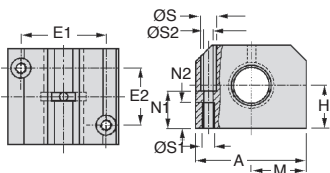
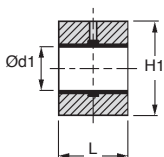
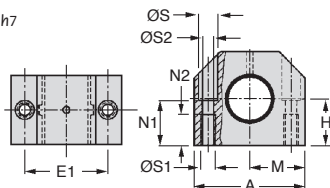
**Fast and silent**



RJUM05



RJUM06



Until  
**-35%<sup>\*\*</sup>**

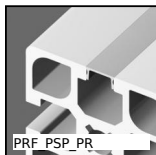
### DISCOUNTS

Qty	1+	6+	20+	40+	60+
Disc.	List	-10%	-15%	-20%	On request

Part number	Ød1	Tolerance	H	H1	A	M	E1	E2	ØS	ØS1	ØS2	N1	N2	L	Price
															each
<b>Short version</b>															1 to 5
RJUM05-12	12	0,02 / 0,05	17	33	40	20,0	29	-	8	M5	4,3	16	11	28	57,00 €
RJUM05-16	16	0,02 / 0,05	19	38	45	22,5	34	-	18	M5	4,3	18	11	30	57,16 €
RJUM05-20	20	0,02 / 0,06	23	45	53	26,5	40	-	19,5	M6	5,3	22	13	30	64,15 €
RJUM05-25	25	0,02 / 0,06	27	54	62	31,0	48	-	11	M8	6,6	26	18	40	66,96 €
RJUM05-30	30	0,03 / 0,07	30	60	67	33,5	53	-	11	M8	6,6	29	18	50	76,48 €
RJUM05-40	40	0,03 / 0,07	39	76	87	43,5	69	-	14	M10	8,4	38	22	60	99,85 €
RJUM05-50	50	0,04 / 0,09	47	92	103	51,5	82	-	19	M12	10,5	46	26	70	135,54 €
<b>Long version</b>															
RJUM06-12	12	0,02 / 0,05	18	35	43	21,5	32	23	8	M5	4,3	16,5	11	39	67,94 €
RJUM06-16	16	0,02 / 0,05	22	42	53	26,5	40	26	10	M6	5,3	21	13	43	75,54 €
RJUM06-20	20	0,02 / 0,06	25	50	60	30,0	45	32	11	M8	6,6	24	18	54	81,36 €
RJUM06-25	25	0,02 / 0,06	30	60	78	39,0	60	40	15	M10	8,4	29	22	67	91,08 €
RJUM06-30	30	0,03 / 0,07	35	70	87	43,5	68	45	15	M10	8,4	34	22	79	99,43 €
RJUM06-40	40	0,03 / 0,07	45	90	108	54,0	86	58	18	M12	10,5	44	26	91	115,81 €
RJUM06-50	50	0,04 / 0,09	50	105	132	66,0	108	50	20	M16	13,5	49	34	113	223,97 €

Dimensions in mm

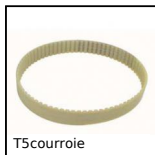
## Our other products



PRF PSP\_PR  
Dual purpose strip  
and cover for  
aluminium profile,  
Inserts into slot



MAX22  
Motor-gearbox 12V  
and 24V DC, from  
0,07 to 0,2Nm



T5courioie  
T type timing belt, T5  
Steel cored  
polyurethane



ACLBT5  
Spherical ended stop  
for aluminium profile,  
Spherical ended stop



R204  
Die spring ISO10243,  
Average



PCatherm  
Pull handle,  
Thermoplastic



WSRM  
Cylindrical polymer  
nut, Polymer  
(Iglidur®) - 1 thread



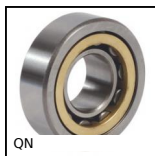
CHM110  
Worm and wheel gear  
reducer, up to 980  
Nm



RBGpl  
Swivel castor with  
plate, Steel - grey  
rubber



DBL820  
Idler for slat top  
chain, Ranges 820  
and 815



QN  
Single row cylindrical  
roller bearing, Free  
outer ring



UCP\_SS  
Stainless steel pillow  
block bearing,  
Stainless steel

## Complementary products



RJUM05  
Drylin R® linear  
bearing housing,  
Closed - Long



AWMP  
Aluminium shaft for  
linear guide,  
Aluminium