

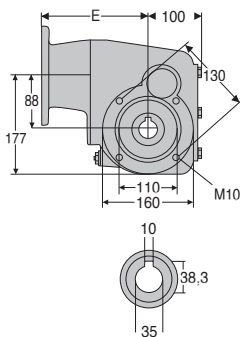
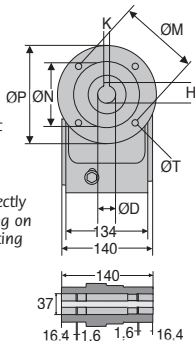
- Ideal gearbox for use in the food industry
- Ratios from 7.5:1 to 60:1
- 2-stage reduction
- B14 flange
- Rounded and polished surfaces to avoid material retention
- Lubricated using food quality grease
- 92% efficient
- Material:
316 stainless steel housing

Accessories

- Can be used with a DER 4-pole motor to create a motor-gearbox
- Torque arms, mounting bracket and protective cover

Info

- All information is engraved directly on to gearbox rather than being on a tag plate to avoid accumulating dirt etc.



Output shaft

Flange dimensions

	ØD	K	H	ØP	ØM	ØN	E	ØT
Flange 71B14	14	5	16,3	105	85	70	162	6,5
Flange 80B14	19	6	21,8	120	100	80	182	6,5
Flange 90B14	24	8	27,3	140	115	95	182	9

DISCOUNTS

Qty	1+	2+	4+
Disc.	Net	-5%	On request

Part N°			Nominal reduction ratio	Actual reduction ratio	Price each
Bride 71B14	Bride 80B14	Bride 90B14			
		RFK58B-7,5-90B14/SS	7,5	7,48	1 688,01 €
		RFK58B-10-90B14/SS	10	9,84	1 688,01 €
		RFK58B-12-90B14/SS	12,5	12,49	1 688,01 €
	RFK58B-15-80B14/SS	RFK58B-15-90B14/SS	15	15,09	1 688,01 €
	RFK58B-20-80B14/SS	RFK58B-20-90B14/SS	20	19,84	1 688,01 €
	RFK58B-25-80B14/SS	RFK58B-25-90B14/SS	25	25,19	1 688,01 €
	RFK58B-30-80B14/SS	RFK58B-30-90B14/SS	30	30,24	1 688,01 €
	RFK58B-40-80B14/SS	RFK58B-40-90B14/SS	40	40,13	1 688,01 €
RFK58B-50-71B14/SS	RFK58B-50-80B14/SS	RFK58B-50-90B14/SS	50	48,18	1 688,01 €
RFK58B-60-71B14/SS	RFK58B-60-80B14/SS	RFK58B-60-90B14/SS	60	59,04	1 688,01 €

All dimensions in mm

Our other products



GBMF
Flanged leadscrew
nut, Flanged nut -
Multiple starts



EHD08-9
Internal epicyclic
servo reducers, from
35 to 50 Nm



PM4
Worm and wheel set,
Bronze



V3RA_PT
3-spoked handwheel
with handle,
Polyamide



PSG1
Spur gear - precision
range, Pre-hardened
Steel 35NCD6



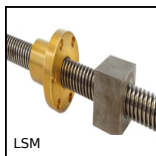
SME
Male rod ends ,
Stainless steel / PTFE



FF20
Offset spur gear
reducer, from 5.80 to
23 Nm



DOMI50
Domino 50 adjustable
slide, Slide DOMILINE
50 with counter and
handw...



LSM
Stainless steel 316L
leadscrew, Stainless
steel - 1 thread



BFD
Locking pin for bush,
+180°C



ACL-PL
Joining plate for
aluminium profile,
Joint plate - 176x86



PRF_FIX_UNI
Universal fastener for
aluminium profile,
Universal

Complementary products



DER71
Stainless steel AC
asynchronous motor
0.25 à 0.37kW, 0.25
to 0.37kW



DER80
Stainless steel AC
asynchronous motor
0.55 - 0.75kW, 0.55 to
0.75kW



DER90
Stainless steel AC
asynchronous motor
1.1 - 1.5kW, 1.1 to
1.5kW



RFKfp
Stainless steel
gearbox - accessories,
Mounting bracket