

- Ideal gearbox for use in the food industry
- Ratios from 7.5:1 to 60:1
- 2-stage reduction
- B14 flange
- Rounded and polished surfaces to avoid material retention
- Lubricated using food quality grease
- 92% efficient
- Material:
  - 316 stainless steel housing

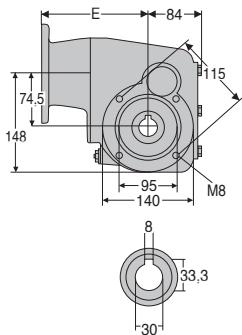
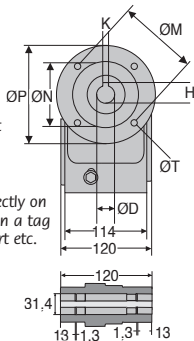


### Accessories

- Can be used with a DER 4-pole motor to create a motor-gearbox
- Torque arms, mounting bracket and protective cover

### Info

- All information is engraved directly on to gearbox rather than being on a tag plate to avoid accumulating dirt etc.



Output shaft

### Flange dimensions

	ØD	K	H	ØP	ØM	ØN	E	ØT
Flange 71B14	14	5	16,3	105	85	70	145,5	6,5
Flange 80B14	19	6	21,8	120	100	80	165,5	6,5
Flange 90B14	24	8	27,3	140	115	95	165,5	9

### DISCOUNTS

Qty	1+	2+	4+
Disc.	Net	-5%	On request

Part N°			Nominal reduction ratio	Actual reduction ratio	Price each
Flange 71B14	Flange 80B14	Flange 90B14			
		RFK48B-7,5-90B14/SS	7,5	7,48	1 352,79 €
		RFK48B-10-90B14/SS	10	9,84	1 352,79 €
		RFK48B-12-90B14/SS	12,5	12,49	1 352,79 €
	RFK48B-15-80B14/SS	RFK48B-15-90B14/SS	15	15,09	1 352,79 €
	RFK48B-20-80B14/SS	RFK48B-20-90B14/SS	20	19,84	1 352,79 €
	RFK48B-25-80B14/SS	RFK48B-25-90B14/SS	25	25,19	1 352,79 €
	RFK48B-30-80B14/SS	RFK48B-30-90B14/SS	30	30,24	1 352,79 €
RFK48B-40-71B14/SS	RFK48B-40-80B14/SS	RFK48B-40-90B14/SS	40	40,13	1 352,79 €
RFK48B-50-71B14/SS	RFK48B-50-80B14/SS	RFK48B-50-90B14/SS	50	48,18	1 352,79 €
RFK48B-60-71B14/SS	RFK48B-60-80B14/SS	RFK48B-60-90B14/SS	60	59,44	1 352,79 €

All dimensions in mm

## Our other products



CHMR50  
Worm and wheel gear reducer, up to 107 Nm



CABtool  
Fitting cable tools, Crimping tools



BOX-TOR-INCH  
Box set of Nitrile O-rings in inch NBR90Sh A, For fasteners and fittings...



GP  
Spring loaded toggle latch, Standard



EFTC  
Fixing support, Stainless steel



SLB  
Indexing plunger, stainless steel



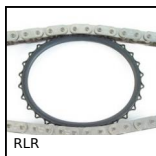
RDCss  
Rigging screw with 2 jaws stainless steel, Stainless steel



RFK28B  
Hypoid gearbox - Stainless steel, up to 130 Nm



PTA40  
Articulated foot with solid base foot Ø 40,



RLR  
Roll-Ring® chain tensioner, Roll-Ring®



PLS  
Cylindrical spacer, Stainless steel 303



UFX  
Spare tyre UNEFLEX® coupling, range

## Complementary products



DER71  
Stainless steel AC asynchronous motor 0.25 à 0.37kW, 0.25 to 0.37kW



DER80  
Stainless steel AC asynchronous motor 0.55 - 0.75kW, 0.55 to 0.75kW



DER90  
Stainless steel AC asynchronous motor 1.1 - 1.5kW, 1.1 to 1.5kW



RFKfp  
Stainless steel gearbox - accessories, Mounting bracket