

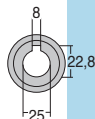
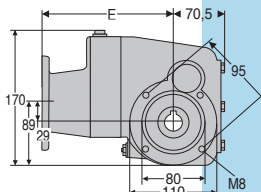
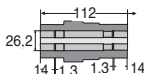
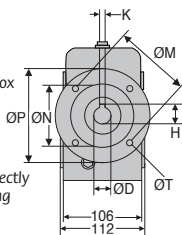
- **Ideal gearbox for use in the food industry**
- Ratios from 50:1 to 300:1
- 3-stage reduction
- B14 or B5 flange
- Rounded and polished surfaces to avoid material retention
- Lubricated using food quality grease
- 90% efficient
- Material:  
316 stainless steel housing

### Accessories

- Can be used with a DER 4-pole motor to create a motor-gearbox
- Torque arms, mounting bracket and protective cover

### Info

- All information is engraved directly on to gearbox rather than being on a tag plate to avoid accumulating dirt etc.



Output shaft

### Flange dimensions

	ØD	K	H	ØP	ØM	ØN	E	ØT
Flange 63B5	11	4	12,8	140	115	95	151	9
Flange 71B14	14	5	16,3	105	85	70	158	7
Flange 80B14	19	6	21,8	120	100	80	178	7

### DISCOUNTS

Qty	1+	2+	4+
Disc.	Net	-5%	On request

Part N°			Nominal reduction ratio	Actual reduction ratio	Price each
Flange 63B5	Flange 71B14	Flange 80B14			
RFK38C-50-63B5/SS	RFK38C-50-71B14/SS	RFK38C-50-80B14/SS	50	52,48	1 260,90 €
RFK38C-60-63B5/SS	RFK38C-60-71B14/SS	RFK38C-60-80B14/SS	60	63,33	1 260,90 €
RFK38C-75-63B5/SS	RFK38C-75-71B14/SS		75	73,33	1 260,90 €
RFK38C-100-63B5/SS	RFK38C-100-71B14/SS		100	101,27	1 260,90 €
RFK38C-125-63B5/SS	RFK38C-125-71B14/SS		125	122,22	1 260,90 €
RFK38C-150-63B5/SS	RFK38C-150-71B14/SS		150	151,56	1 260,90 €
RFK38C-200-63B5/SS			200	196,43	1 260,90 €
RFK38C-250-63B5/SS			250	243,57	1 260,90 €
RFK38C-300-63B5/SS			300	302,5	1 260,90 €

All dimensions in mm

0 825 88 6000

Service 0,15 €/min  
+ prix appel

Fax

## Our other products



RFVfp

Stainless steel worm and wheel gearboxes, Mounting bracket



BAB

Hardened Stainless steel ball pin, Stainless steel hardened



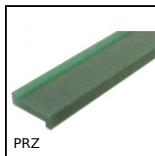
ADL\_M

Male eye bolt conforms to DIN580, Stainless steel



RFV40

Stainless steel worm and wheel gearbox, up to 47 Nm



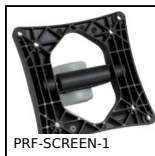
PRZ

Wear strip for slat top chain, Z profile to be clipped



EMAS

Antistatic knurled nut, Antistatic



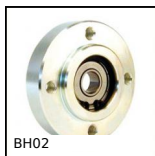
PRF-SCREEN-1

Screen support, Basic support



MAX26

Motor-gearbox 12V and 24V DC, from 0,075 to 0,6Nm



BH02

Single housed bearing assembly, Bearing



PAMF120

Articulated fixable foot, pressed bolt-



UCF

Cast iron flange bearing unit, Cast iron



RBS

Dynamic washer DIN2093, Steel

## Complementary products



DER63

Stainless steel AC asynchronous motor 0.18 kW, 0.18kW



DER71

Stainless steel AC asynchronous motor 0.25 à 0.37kW, 0.25 to 0.37kW



DER80

Stainless steel AC asynchronous motor 0.55 - 0.75kW, 0.55 to 0.75kW



RFKfp

Stainless steel gearbox - accessories, Mounting bracket