

Hypoid gearbox

Sta

RFK38B

Torque up to 200Nm

- Ideal gearbox for use in the food industry
- Ratios from 7.5:1 to 60:1
- 2-stage reduction
- B14 flange
- Rounded and polished surfaces to avoid material retention
- Lubricated using food quality grease
- 90% efficient
- Material:
 - 316 stainless steel housing

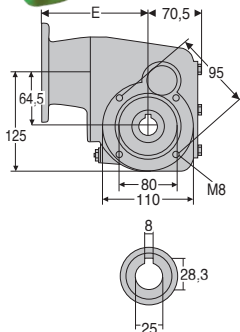
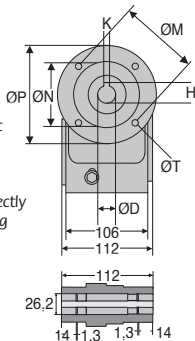


Accessories

- Can be used with a DER 4-pole motor to create a motor-gearbox
- Torque arms, mounting bracket and protective cover

Info

- All information is engraved directly on to gearbox rather than being on a tag plate to avoid accumulating dirt etc.



Flange dimensions

	ØD	K	H	ØP	ØM	ØN	E	ØT
Flange 71B14	14	5	16,3	105	85	70	112,5	7
Flange 80B14	19	6	21,8	120	100	80	132,5	7
Flange 90B14	24	8	27,3	140	115	95	132,5	9

Output shaft

DISCOUNTS

Qty	1+	2+	4+
Disc.	Net	-5%	On request

Part N°			Nominal reduction ratio	Actual reduction ratio	Price each
Flange 71B14	Flange 80B14	Flange 90B14			
	RFK38B-7.5-80B14/SS	RFK38B-7.5-90B14/SS	7,5	7,6	1 051,60 €
	RFK38B-10-80B14/SS	RFK38B-10-90B14/SS	10	10,5	1 051,60 €
	RFK38B-12-80B14/SS	RFK38B-12-90B14/SS	12,5	12,67	1 051,60 €
RFK38B-15-71B14/SS	RFK38B-15-80B14/SS	RFK38B-15-90B14/SS	15	14,67	1 051,60 €
RFK38B-20-71B14/SS	RFK38B-20-80B14/SS	RFK38B-20-90B14/SS	20	20,25	1 051,60 €
RFK38B-25-71B14/SS	RFK38B-25-80B14/SS	RFK38B-25-90B14/SS	25	24,44	1 051,60 €
RFK38B-30-71B14/SS	RFK38B-30-80B14/SS	RFK38B-30-90B14/SS	30	30,31	1 051,60 €
RFK38B-40-71B14/SS	RFK38B-40-80B14/SS		40	39,29	1 051,60 €
RFK38B-50-71B14/SS	RFK38B-50-80B14/SS		50	48,71	1 051,60 €
RFK38B-60-71B14/SS	RFK38B-60-80B14/SS		60	60,5	1 051,60 €

All dimensions in mm

Our other products



RURp

Fixed castor with plate, Polyurethane - Aluminium rim (Free running)



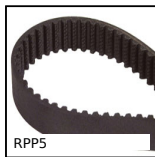
SL5

Bearing block for leadscrew, Floating Drylin® bearing block



SVT15

Screwjack with travelling screw, with translating screw



RPP5

RPP heavy duty timing belt, RPP5



SBF

Sealed flange bearing unit for Food Industry, cover



LC

Friction clutch, 30 to 240 Nm



BUH77

Motor-gearbox 12V and 24V DC, from 0.1 to 2 Nm



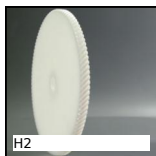
GCB880

Curved track for slat top chain, Ranges 880 and 881



HTD8M_50

HTD Heavy duty timing pulley, HTD8 Cast



H2

Crossed helical gear crossed axis at 90°, Machined plastic (delrin)



BOX-CS

Hose clamp, Box set of steel hose clamps



DOMI120

Domino 120 adjustable slide, Slide DOMILINE 120 with counter and han...

Complementary products



DER71

Stainless steel AC asynchronous motor 0.25 to 0.37kW



DER80

Stainless steel AC asynchronous motor 0.55 to 0.75kW



DER90

Stainless steel AC asynchronous motor 1.1 to 1.5kW



RFKfp

Stainless steel gearbox - accessories, Mounting bracket