

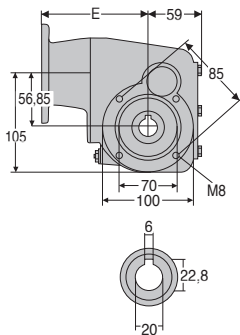
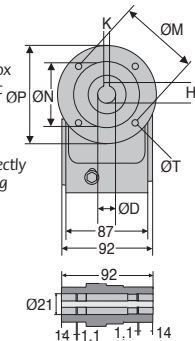
- **Ideal gearbox for the food industry**
- Ratios from 7.5:1 to 60:1
- 2-stage reduction
- B14 flange
- Rounded and polished surfaces to avoid material retention
- Lubricated using food quality grease
- 92% efficient
- Material:
316 stainless steel housing

Accessories

- Can be used with a DER 4-pole motor to create a motor-gearbox
- Torque arms, mounting bracket and protective cover

Info

- All information is engraved directly on to gearbox rather than being on a tag plate to avoid accumulating dirt etc.



Output shaft

Flange dimensions

	ØD	K	H	ØP	ØM	ØN	E	ØT
Flange 71B14	14	5	16,3	105	85	70	112,5	7
Flange 80B14	19	6	21,8	120	100	80	132,5	7
Flange 90B14	24	8	27,3	140	115	95	132,5	9

DISCOUNTS

Qty	1+	2+	4+
Disc	Net	-5%	On request

Part N°			Nominal reduction ratio	Actual reduction ratio	Price each
Flange 71B14	Flange 80B14	Flange 90B14			
RFK28B-7.5-71B14/SS	RFK28B-7.5-80B14/SS	RFK28B-7.5-90B14/SS	7,5	7,73	832,09 €
RFK28B-10-71B14/SS	RFK28B-10-80B14/SS	RFK28B-10-90B14/SS	10	10,47	832,09 €
RFK28B-12-71B14/SS	RFK28B-12-80B14/SS	RFK28B-12-90B14/SS	12,5	12,47	832,09 €
RFK28B-15-71B14/SS	RFK28B-15-80B14/SS		15	14,92	832,09 €
RFK28B-20-71B14/SS	RFK28B-20-80B14/SS		20	20,21	832,09 €
RFK28B-25-71B14/SS	RFK28B-25-80B14/SS		25	24,07	832,09 €
RFK28B-30-71B14/SS	RFK28B-30-80B14/SS		30	29,33	832,09 €
RFK28B-40-71B14/SS			40	40,09	832,09 €
RFK28B-50-71B14/SS			50	48,86	832,09 €
RFK28B-60-71B14/SS			60	58,36	832,09 €

All dimensions in mm

Our other products



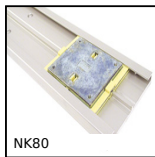
IGBSz

Cylindrical ballscrew nut, Cylindrical leadscrew nut



PTA50

Articulated levelling foot, pressed base Ø50, Ø 50



NK80

Drylin®N miniature guiding system, Width 80mm



CHAFR-MINI

Miniature friction hinge, Friction



H3

Crossed helical gear crossed axis at 90°, Steel 20NCD2



PRF-SRA-78

Lock for aluminium profile, Quick fitting, self locking door lock



CHASb89

Hinge without pin, Plastic hinge



BPM_LOK

Long-Lok slotted spring plunger with ball tip, LONG-LOK - Stainless ...



RBN

Wheel, Rubber tyre - Polypropylene rim



T5M_T10M

T type timing belt per metre, T10 Steel



LRRA

Latch with locking system, Aluminium



SSDB

Stainless steel bevel gear, 2:1

Complementary products



RFVbr

Stainless steel reaction arm, Reaction arm



DER71

Stainless steel AC asynchronous motor 0.25 à 0.37kW, 0.25 to 0.37kW



DER80

Stainless steel AC asynchronous motor 0.55 - 0.75kW, 0.55 to 0.75kW



DER90

Stainless steel AC asynchronous motor 1.1 - 1.5kW, 1.1 to 1.5kW