

# Tapered roller bearing

## QTR

## Steel

- Especially designed to handle combined axial and radial loads
- A demountable bearing, i.e. the inner ring and roller cage form a single element that can be mounted separately from the external ring
- Static and dynamic loads are radial loads
- Materials:
  - Steel flanges and cylinders
  - Pressed steel cage

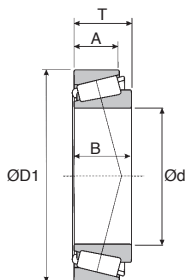


### DISCOUNTS

Qty	1+	4+	8+
Disc.	List	-15%	On request

Part number	Ød	ØD1	T	B	A	Load (kN)		Load (rpm)		Weight (kg)	Price each 1 to 3
						Dynamic (C)	Static (Co)	Grease	Oil		
QTR30302	15	42	14,3	13	11	22	19	13770	16200	0,095	6,18 €
QTR30203	17	40	13,3	12	11	18	18	13770	16200	0,075	4,34 €
QTR30303	17	47	15,3	14	12	27	24	12240	14400	0,130	4,92 €
QTR32303	17	47	20,3	19	16	34	32	12240	14400	0,170	6,79 €
QTR32004	20	42	15,0	15	12	23	26	12240	14400	0,097	5,81 €
QTR30204	20	47	15,3	14	12	27	27	11475	13500	0,120	5,41 €
QTR30304	20	52	16,3	15	13	33	31	10710	12600	0,170	5,44 €
QTR32304	20	52	22,3	21	18	43	44	10710	12600	0,230	7,61 €
QTR32005	25	47	15,0	15	11,5	26	31	10710	12600	0,110	6,18 €
QTR30205	25	52	16,3	15	13	30	32	9945	11700	0,150	6,33 €
QTR32205	25	52	19,3	18	15	35	43	9945	11700	0,190	6,73 €
QTR33205	25	52	22,0	22	18	46	54	9945	11700	0,230	9,91 €
QTR30305	25	62	18,3	17	15	43	42	9180	10800	0,260	6,73 €
QTR32305	25	62	25,3	24	20	59	61	9180	10800	0,360	10,52 €
QTR32006	30	55	17,0	17	13	35	43	9180	10800	0,170	7,03 €
QTR30206	30	62	17,3	16	14	39	43	8415	9900	0,230	7,68 €
QTR32206	30	62	21,3	20	13	49	55	8415	9900	0,280	7,49 €
QTR33206	30	62	25,0	25	14	63	75	8415	9900	0,370	14,07 €
QTR31306	30	72	20,8	19	17	46	49	7268	8550	0,390	12,85 €
QTR32306	30	72	28,8	27	19,5	75	83	7650	9000	0,550	14,01 €
QTR32007	35	62	18,0	18	14	42	52	8415	9900	0,220	8,38 €
QTR30207	35	72	18,3	17	15	50	54	7268	8550	0,320	8,75 €
QTR32207	35	72	24,3	23	19	64	76	7268	8550	0,430	8,87 €
QTR33207	35	72	28,0	28	22	82	103	7268	8550	0,560	14,68 €
QTR30307	35	80	22,8	21	18	70	72	6885	8100	0,520	10,67 €
QTR31307	35	80	22,8	21	25	60	65	6503	7650	0,520	13,24 €
QTR32307	35	80	32,8	31	25	93	103	6885	8100	0,730	14,56 €

Dimensions in mm



## DISCOUNTS

Qty	1+	4+	8+
Disc.	List	-15%	On request

Part number	Ød	ØD1	T	B	A	Load (kN)		Load (rpm)		Weight (kg)	Price each 1 to 3
						Dynamic (C)	Static (Co)	Lubricant Grease	Oil		
QTR32008	40	68	19,0	19	14,5	51	69	7268	8550	0,270	9,51 €
QTR33108	40	75	26,0	26	20,5	77	101	6885	8100	0,510	14,10 €
QTR30208	40	80	19,8	18	16	60	66	6503	7650	0,420	10,34 €
QTR32208	40	80	24,8	23	19	77	84	6503	7650	0,530	12,57 €
QTR33208	40	80	32,0	32	25	102	129	6503	7650	0,770	18,11 €
QTR30308	40	90	25,3	23	20	84	93	6120	7200	0,720	12,05 €
QTR31308	40	90	25,3	23	17	83	79	5738	6750	0,720	15,97 €
QTR32308	40	90	35,3	33	27	114	137	6120	7200	1,000	18,84 €
QTR32009	45	75	20,0	20	15,5	57	78	6503	7650	0,340	9,60 €
QTR33109	45	80	26,0	26	20,5	94	111	6120	7200	0,560	20,93 €
QTR30209	45	85	20,8	19	16	64	75	6120	7200	0,480	11,68 €
QTR32209	45	85	24,8	23	19	89	96	6120	7200	0,580	13,92 €
QTR33209	45	85	32,0	32	25	105	140	5738	6750	0,820	19,82 €
QTR30309	45	100	27,3	25	22	105	117	5355	6300	0,970	15,54 €
QTR31309	45	100	27,3	25	18	103	100	5126	6030	0,950	17,31 €
QTR32309	45	100	38,3	36	30	137	166	5355	6300	1,350	21,54 €
QTR32010	50	80	20,0	20	15,5	59	86	6120	7200	0,370	13,21 €
QTR33010	50	80	24,0	24	19	67	100	6120	7200	0,450	15,94 €
QTR33110	50	85	26,0	26	20	84	119	5738	6750	0,590	22,36 €
QTR30210	50	90	21,8	20	17	75	89	5738	6750	0,540	14,84 €
QTR32210	50	90	24,8	23	19	80	98	5738	6750	0,610	14,62 €
QTR33210	50	90	32,0	32	24,5	111	156	5355	6300	0,900	26,13 €
QTR30310	50	110	29,3	27	23	140	137	4820	5670	1,250	18,63 €
QTR31310	50	110	29,3	27	19	119	117	4590	5400	1,200	26,07 €
QTR32310	50	110	42,3	40	33	179	211	4590	5400	1,850	31,45 €
QTR32011	55	90	23,0	23	17,5	79	113	5355	6300	0,550	13,43 €
QTR33011	55	90	27,0	27	21	101	134	5355	6300	0,670	22,52 €
QTR33111	55	95	30,0	30	23	107	152	5126	6030	0,860	30,75 €
QTR30211	55	100	22,8	21	18	101	103	5126	6030	0,700	13,89 €
QTR32211	55	100	26,8	25	21	103	126	5126	6030	0,830	18,51 €
QTR33211	55	100	35,0	35	27	135	186	4820	5670	1,200	26,71 €
QTR30311	55	120	31,5	29	25	162	159	4284	5040	1,550	23,31 €
QTR31311	55	120	31,5	29	21	118	134	4284	5040	1,550	28,73 €
QTR32311	55	120	45,5	43	35	211	254	4284	5040	2,500	38,73 €

Dimensions in mm

# Tapered roller bearing

## QTR

## Steel

- Especially designed to handle combined axial and radial loads
- A demountable bearing, i.e. the inner ring and roller cage form a single element that can mounted separately from the external ring
- Static and dynamic loads are radial loads
- Materials:  
Steel flanges and cylinders  
Pressed steel cage

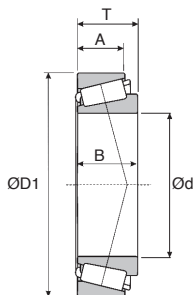


### DISCOUNTS

Qty	1+	4+	8+
Disc.	List	-15%	On request

Part number	Ød	ØD1	T	B	A	Load (kN)		Load (rpm)		Weight (kg)	Price each 1 to 3
						Dynamic (C)	Static (Co)	Lubricant Grease	Oil		
QTR33012	60	95	27,0	27	21	103	140	5126	6030	0,710	26,53 €
QTR33112	60	100	30,0	30	23	114	166	4820	5670	0,920	32,25 €
QTR30212	60	110	23,8	22	19	109	111	4590	5400	0,880	16,52 €
QTR32212	60	110	29,8	28	24	122	156	4590	5400	1,150	20,07 €
QTR33212	60	110	38,0	38	29	164	231	4590	5400	1,600	32,58 €
QTR30312	60	130	33,5	31	26	164	192	4055	4770	1,950	29,65 €
QTR31312	60	130	33,5	31	22	142	162	4055	4770	1,900	32,00 €
QTR32312	60	130	48,5	46	37	224	284	4055	4770	2,850	40,36 €
QTR32013	65	100	23,0	23	17,5	94	124	4590	5400	0,630	19,58 €
QTR33013	65	100	27,0	27	21	107	149	4820	5670	0,780	24,57 €
QTR33113	65	110	34,0	34	26,5	139	203	4284	5040	1,300	35,49 €
QTR30213	65	120	24,8	23	20	129	131	4284	5040	1,150	21,78 €
QTR32213	65	120	32,8	31	27	148	189	4284	5040	1,500	22,76 €
QTR33213	65	120	41,0	41	32	190	264	4055	4770	2,050	41,27 €
QTR30313	65	140	36,0	33	28	190	223	3672	4320	2,400	35,98 €
QTR31313	65	140	36,0	48	39	161	189	3672	4320	2,350	39,41 €
QTR32313	65	140	51,0	37	29	241	338	3456	4320	3,450	52,02 €
QTR32014	70	110	25,0	25	19	99	149	4284	5040	0,840	24,05 €
QTR33014	70	110	31,0	31	25,5	127	192	4284	5040	1,100	25,79 €
QTR33114	70	120	37,0	37	29	168	245	4055	4770	1,700	39,04 €
QTR30214	70	125	26,3	24	21	122	152	4055	4770	1,250	24,51 €
QTR32214	70	125	33,3	31	27	153	203	4055	4770	1,600	26,68 €
QTR33214	70	125	41,0	41	32	197	279	3825	4500	2,100	44,06 €
QTR30314	70	150	38,0	35	30	215	254	3443	4050	2,900	44,85 €
QTR31314	70	150	38,0	35	25	183	215	3443	4050	2,950	46,81 €
QTR32314	70	150	54,0	51	42	291	372	3443	4050	4,300	68,72 €

Dimensions in mm



## DISCOUNTS

Qty	1+	4+	8+
Disc.	List -15%	On request	

Part number	Ød	ØD1	T	B	A	Load (kN)		Load (rpm)		Weight (kg)	Price each 1 to 3
						Dynamic (C)	Static (Co)	Grease	Oil		
QTR32015	75	115	25,0	25	19	103	159	4055	4770	0,900	26,10 €
QTR33015	75	115	31,0	31	25,5	131	223	4055	4770	1,150	44,64 €
QTR33115	75	125	37,0	37	29	172	259	3825	4500	1,800	41,18 €
QTR30215	75	130	27,3	25	22	137	172	3825	4500	1,400	26,89 €
QTR32215	75	130	33,3	31	27	157	207	3825	4500	1,700	32,09 €
QTR33215	75	130	41,0	41	31	204	294	3672	4320	2,250	44,92 €
QTR30315	75	160	40,0	37	31	241	284	3290	3870	3,450	60,12 €
QTR31315	75	160	40,0	37	26	204	240	3290	3870	3,500	63,46 €
QTR32016	80	125	29,0	29	22	135	211	3825	4500	1,300	30,29 €
QTR33016	80	125	36,0	36	29,5	164	279	3825	4500	1,650	49,14 €
QTR33116	80	130	37,0	37	29	175	274	3672	4320	1,900	47,55 €
QTR30216	80	140	28,3	26	22	148	179	3672	4320	1,600	38,58 €
QTR32216	80	140	35,3	33	28	183	240	3443	4050	2,050	38,37 €
QTR33216	80	140	46,0	46	35	246	367	3443	4050	2,900	53,64 €
QTR30316	80	170	42,5	39	33	264	313	3290	3870	4,100	63,09 €
QTR31316	80	170	42,5	39	27	219	259	3060	3600	4,050	127,99 €
QTR32316	80	170	61,5	58	48	372	490	3290	3870	6,200	96,20 €
QTR32017	85	130	29,0	29	22	137	219	3672	4320	1,350	37,63 €
QTR33017	85	130	36,0	36	29,5	179	303	3672	4320	1,750	54,16 €
QTR33117	85	140	41,0	41	32	215	333	3443	4050	2,450	52,44 €
QTR30217	85	150	30,5	28	24	172	215	3290	3870	2,050	38,21 €
QTR32217	85	150	38,5	36	30	207	279	3290	3870	2,600	47,98 €
QTR33217	85	150	49,0	49	37	280	421	3290	3870	3,700	66,46 €
QTR30317	85	180	44,5	41	34	296	357	3060	3600	4,850	65,39 €
QTR32018	90	140	32,0	32	24	164	264	3290	3870	1,750	43,17 €
QTR33018	90	140	39,0	39	32,5	211	347	3443	4050	2,200	67,07 €
QTR33118	90	150	45,0	45	35	246	382	3290	3870	3,100	64,32 €
QTR32218	90	160	42,5	40	34	246	333	3060	3600	3,350	54,34 €
QTR30318	90	190	46,5	43	36	323	392	3060	3600	5,650	103,58 €
QTR31318	90	190	46,5	43	30	258	308	2601	3060	5,900	196,02 €
QTR32318	90	190	67,5	64	53	447	597	3060	3600	8,400	155,20 €

Dimensions in mm

## Our other products



SVR20

Screwjack with travelling nut, with moving nut



PDM\_PDV

Detectable plastic palm grip, by metal detectors



Q1

Self-aligning radial ball bearing, Steel



V3RA\_PTR

3-spoked handwheel with foldable handle, Polyamide



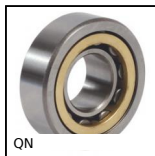
DP

Dowel pin, Solid ISO 2338



HTD8M\_30

HTD Heavy duty timing pulley, HTD8 Cast



QN

Single row cylindrical roller bearing, Free outer ring



LWL

Linear ball slide - Stainless steel balls, Chariot - from 514 N to 1...



UCFL\_PBT

Stainless steel/Polymer flanged bearing, Polymer and



PRESSHR

Manual workbench press, Force up to 500kg



HW\_HT

Half-rail guide, Rail



CFUURSS

Cam follower stainless steel, Standard - stainless steel

## Complementary products



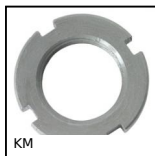
QNU

Single row cylindrical roller bearing, Free inner ring



Q1

Self-aligning radial ball bearing, Steel



KM

Bearing locknut, Locknut KM



EAR

Bearing locknut, Self locking locknut - nylon lock washer