

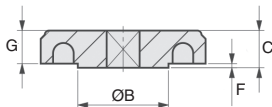
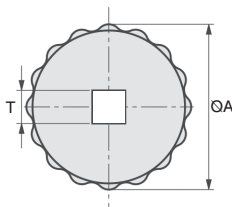
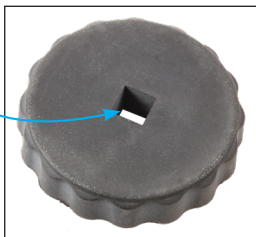
Small lobed handle

PVL

With square bore

- **Handling element**
- Max working temperature: 100°C
- Material:
Polyamide
- Not sold individually,
please contact-us for details

Square
bore



DISCOUNTS

Qty	1+	10+	20+	50+	100+	200+
Disc	Net	-5%	-10%	-15%	-20%	On request

Part N°	ØA	ØB	C	T	F	G	Weight (g)	Stock*	Price each 1 to 9
PVL40-6/SQ	40	20	9	6x6	1	8	10	✓	2,35 €
PVL40-8/SQ	40	20	9	8x8	1	8	10	✓	2,35 €

All dimensions in mm

HPC

WEB
04/2021

www.hpceurope.com

Tél: 0 825 88 5000 Service 0,15 €/min + prix appel

Our other products



AT5P_AT10P
Connecting plate for AT type timing belts, AT10



QTR
Tapered roller bearing, Steel



BFDdII
Locking pin for bushes, Nickel-plated steel



BTESS
Universal stainless steel arm for tensioner, For use in hostile envi...



HBM
Adjustment bushing for half-rail guide, Adjustment bushing



BABA
Ball pin lifting ring, Steel



CHALss
Piano hinge, Stainless steel



MSP19
Masterplate® glueable insert Ø19/Ø20, Cylindrical with nut



PLM-16A
Magnetic stud with threaded hole, With threaded hole



LVT
Miniature motorised actuator 2A, 2 ampers



PT820
Drive sprocket for slat top chain, Ranges 820 and 815



BLHB30
Right angled gearbox, bored shafts, up to 4.4 Nm

Complementary products



BMF
Knurled knob - female, Knurled - blind



GLB
Small 6 lobe threaded handle - female, Technopolymer - Brass



GGB
Female wing knob, Fully threaded