

Adjustable furniture foot

For square tube

PTCR

Furniture foot with simple height adjustment

- For square tubes 20x20mm to 50x50mm
- Turn to adjust height
- Working T° -30°C to +80°C
- Material:

Thermoplastic PA12 black

Advantages

- Easy height adjustment
- Easy to install in the tube by pressure mounting

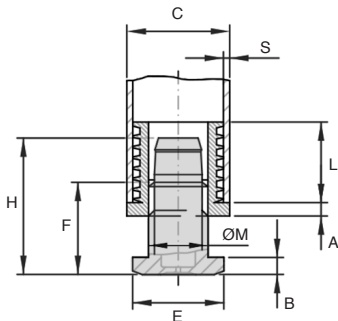
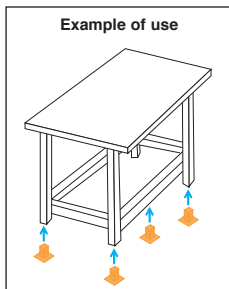
Info

- Not sold individually, please contact us for details

NEW!



Example of use



DISCOUNT

Qty	1+	60+	100+	200+
Disc.	List	-5%	-10%	On request

Part number	C	E	A	B	ØM	F	L	H	S	Stock*	Price each 1 à 59
PTCR20-M10	20	20	5	4	M10	24	16,7	-	1,5 - 2	-	1,88 €
PTCR25-M16	25	24	5	5	M16	22	20	34,5	1,5 - 2	-	2,08 €
PTCR30-M22	30	28	5	5	M22	20	19,5	45,5	1,5 - 2	-	1,96 €
PTCR35-M22	35	28	5	5	M22	21,5	29,3	34,5	1,5 - 2	-	3,04 €
PTCR40-M22	40	28	5	5	M22	21,5	29,3	34,5	1,5 - 2	-	3,48 €
PTCR50-M30	50	41	5	5	M30	28	29,3	45,5	1,5 - 2	-	4,72 €

*Depending on availability - Dimensions in mm

Stainless steel telescopic furniture foot

With threaded stud

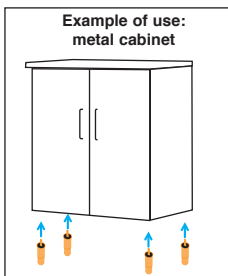
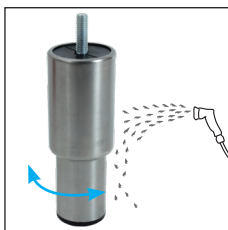
PTMR

Furniture foot with simple height adjustment

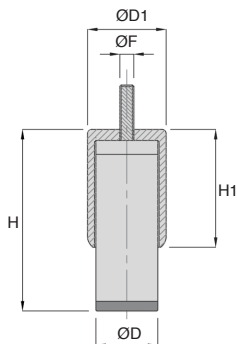
- Turn to adjust height
- Materials:
Stainless steel foot 304
Glass fibre reinforced nylon internal thread
Anti-slip pad in black PVC

Advantages

- Easy height adjustment
- When washing, the water flows over the outer part of the foot



NEW!



DISCOUNT

Qty	1+	6+	10+	15+	20+
Disc.	List	-5%	-10%	-15%	On request

Part number	ØD	ØD1	H	H1	ØF	Static load (N)	Stock*	Price each 1 à 5
PTMR30-40-M10	30	40	80/110	67	M10x15	3000	-	21,39 €
PTMR44-56-M10	44,5	56,5	130/180	85	M10x30	5000	-	26,58 €
PTMR56-64-M10	56,5	64	130/180	85	M10x30	8000	-	29,25 €

*Depending on availability - Dimensions in mm

Stainless steel telescopic furniture foot

With square plate

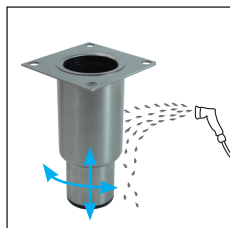
PTMC

Furniture foot with simple height adjustment

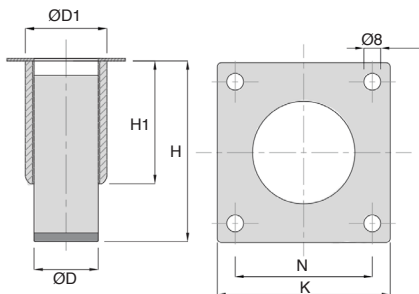
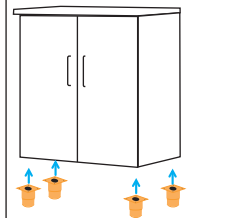
- Turn to adjust height
- Materials:
 - Stainless steel foot 304
 - Glass fibre reinforced nylon internal thread
 - Anti-slip pad in black PVC

Advantages

- Easy height adjustment
- When washing, the water flows over the outer part of the foot



Example of use:
metal cabinet



DISCOUNT

Qty	1+	6+	10+	15+	20+
Disc.	List -5%	-10%	-15%	On request	

Part number	ØD	ØD1	H	H1	K	N	Static load (N)	Stock*	Price each 1 to 5
PTMC44-56-82	44,5	56,5	130/180	85	82	65	5000	-	31,23 €
PTMC56-64-82	56,6	64	130/180	85	82	65	8000	-	33,81 €

*Depending on availability - Dimensions in mm

Our other products



CHM40

Worm and wheel gear reducer, up to 57 Nm



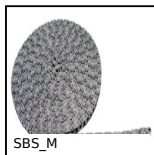
KB_OP

Open precision linear bearing, Precision - steel



NSR

Adjustable clamp, Adjustable



SBS_M

Single chain supplied by the metre, Stainless steel



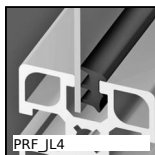
EMS

Stainless steel knurled thumb nut, Knurled



MFB

Flexible bellows coupling, Aluminium and Bronze - With set screw



PRF JL4

Lip seal for panel, Door seal - Ø 4mm



MAX22

Motor-gearbox 12V and 24V DC, from 0,07 to 0,2Nm



PW_PWG1

Wheel - precision range, Bronze



RLR

Roll-Ring® chain tensioner, Roll-Ring® Self-adjusting



BLHT20

Right angled gearbox, from 0.66 to 1.77 Nm



CSS

Spherical bushing, Steel / self lubricating steel

Complementary products



PTCR

Adjustable furniture foot, square tube



PTMC

Telescopic furniture foot, square plate