

Adjustable furniture foot

For square tube

PTCR

Furniture foot with simple height adjustment

- For square tubes 20x20mm to 50x50mm
- Turn to adjust height
- Working T° -30°C to +80°C
- Material:

Thermoplastic PA12 black

Advantages

- Easy height adjustment
- Easy to install in the tube by pressure mounting

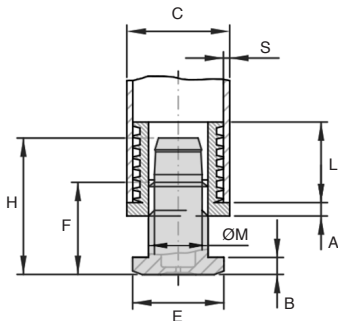
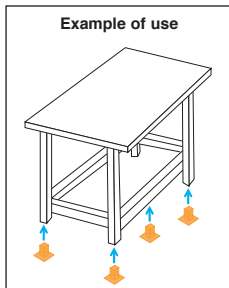
Info

- Not sold individually, please contact us for details

NEW!



Example of use



DISCOUNT

Qty	1+	60+	100+	200+
Disc.	List	-5%	-10%	On request

Part number	C	E	A	B	ØM	F	L	H	S	Stock*	Price each 1 à 59
PTCR20-M10	20	20	5	4	M10	24	16,7	-	1,5 - 2	-	1,88 €
PTCR25-M16	25	24	5	5	M16	22	20	34,5	1,5 - 2	-	2,08 €
PTCR30-M22	30	28	5	5	M22	20	19,5	45,5	1,5 - 2	-	1,96 €
PTCR35-M22	35	28	5	5	M22	21,5	29,3	34,5	1,5 - 2	-	3,04 €
PTCR40-M22	40	28	5	5	M22	21,5	29,3	34,5	1,5 - 2	-	3,48 €
PTCR50-M30	50	41	5	5	M30	28	29,3	45,5	1,5 - 2	-	4,72 €

*Depending on availability - Dimensions in mm

Stainless steel telescopic furniture foot

With threaded stud

PTMR

Furniture foot with simple height adjustment

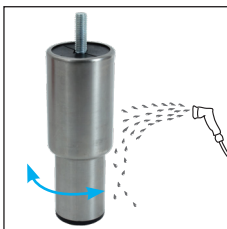
- Turn to adjust height
- Materials:
Stainless steel foot 304
Glass fibre reinforced nylon internal thread
Anti-slip pad in black PVC

Advantages

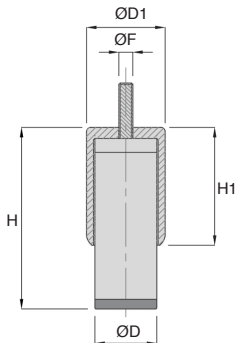
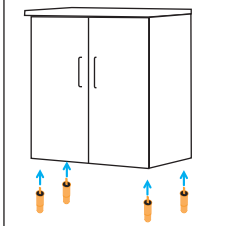
- Easy height adjustment
- When washing, the water flows over the outer part of the foot



NEW!



Example of use: metal cabinet



DISCOUNT

Qty	1+	6+	10+	15+	20+
Disc.	List	-5%	-10%	-15%	On request

Part number	ØD	ØD1	H	H1	ØF	Static load (N)	Stock*	Price each 1 à 5
PTMR30-40-M10	30	40	80/110	67	M10x15	3000	-	21,39 €
PTMR44-56-M10	44,5	56,5	130/180	85	M10x30	5000	-	26,58 €
PTMR56-64-M10	56,5	64	130/180	85	M10x30	8000	-	29,25 €

*Depending on availability - Dimensions in mm

Stainless steel telescopic furniture foot

With square plate

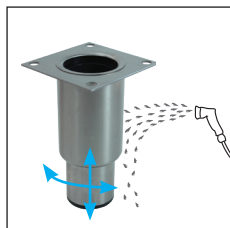
PTMC

Furniture foot with simple height adjustment

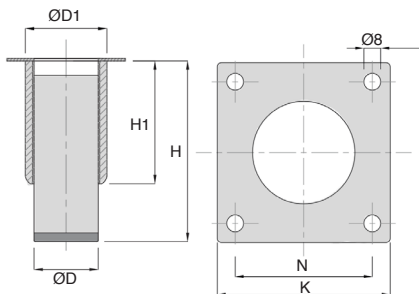
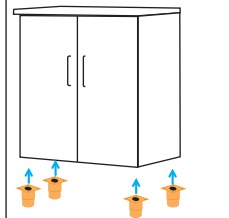
- Turn to adjust height
- Materials:
 - Stainless steel foot 304
 - Glass fibre reinforced nylon internal thread
 - Anti-slip pad in black PVC

Advantages

- Easy height adjustment
- When washing, the water flows over the outer part of the foot



Example of use:
metal cabinet



DISCOUNT

Qty	1+	6+	10+	15+	20+
Disc.	List -5%	-10%	-15%	-	On request

Part number	ØD	ØD1	H	H1	K	N	Static load (N)	Stock*	Price each 1 to 5
PTMC44-56-82	44,5	56,5	130/180	85	82	65	5000	-	31,23 €
PTMC56-64-82	56,6	64	130/180	85	82	65	8000	-	33,81 €

*Depending on availability - Dimensions in mm

Our other products



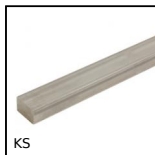
Worm and wheel set,
Hardened steel



Flat magnet, Flat
magnet



Miniature motorised
actuator 4A, 4 amperes



Keysteel, Stainless
steel - Keystock



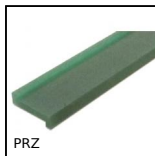
Connecting plate for T
type timing belts, T10



Articulated levelling
foot, pressed base
Ø80, Ø 80



Single rod clip, Round



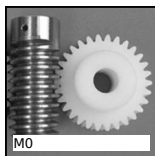
Wear strip for slat top
chain, Z profile to be
clipped



Ball transfer unit
housed spring loaded,
High



Manual leadscrew
table with opposing
threads, 20kg



Worm and wheel set,
Machined plastic
(delrin)



Floor anchor for
aluminium profile,
Adjustable

Complementary products



Telescopic furniture
foot, threaded stud



Telescopic furniture
foot, square plate