

Flexible tube handle



PSPT

For Ø18 - Ø33 tubes

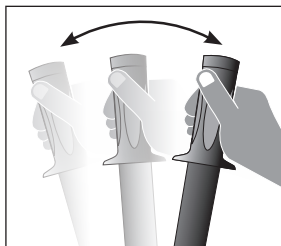
- Tube handle with collar
- Smooth interior
- Material:
Black PVC

Assembly

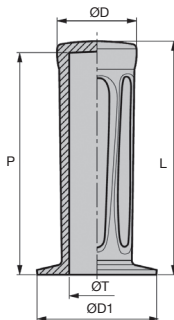
- Fit using a mallet,
no adhesive required

Advantages

- Resists oil, shocks and low temperatures



Typical application



DISCOUNTS

Qty	1+	60+	100+	200+
Disc.	List	-5%	-10%	On request

Part number	Tube		ØD	ØD1	P	Weight (g)	Stock*	Price each 1 to 59
	ØT	L						
PSPT18-115	18-19	115	31	44	110	62	✓	3,15 €
PSPT20-115	20-21	115	31	44	110	56	✓	2,79 €
PSPT22-115	22-23	115	31	44	110	46	✓	2,42 €
PSPT24-125	24-25	125	36	49	120	72	✓	3,60 €
PSPT26-125	26	125	36	49	120	60	✓	3,15 €
PSPT27-125	27-28	125	36	49	120	50	✓	3,03 €
PSPT29-125	29	125	36	49	120	50	✓	3,03 €
PSPT30-130	30	130	42	51	125	92	✓	3,60 €
PSPT33-130	33	130	42	51	125	74	✓	3,15 €

*Depending on availability - Dimensions in mm

Conical flexible shaft handle Ø20

For shafts Ø6 to Ø12

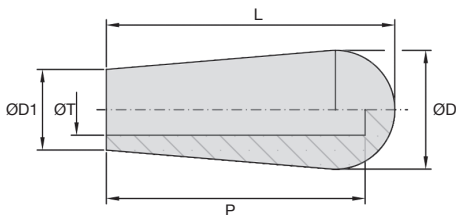
PSPE20

Conical handle

- Smooth blind hole
- Working T°: 0°C to +70°C
- Material:
Black PVC

Assembly

- Fit using a mallet, no adhesive required



DISCOUNTS

Qty	1+	60+	100+	200+
Disc. List	-5%	-10%	On request	

Part number	ØD	ØD1	ØT	L	P	Weight (g)	Stock*	Price each 1 to 59
PSPE20-43-6	20	14	6	43	40	11	-	1,74 €
PSPE20-43-7	20	14	7	43	40	10	-	1,65 €
PSPE20-43-8	20	14	8	43	40	10	-	1,59 €
PSPE20-43-10	20	14	10	43	40	9	-	1,53 €
PSPE20-43-12	20	14	12	43	40	8	-	1,47 €

*Depending on availability - Dimensions in mm

Conical flexible shaft handle Ø22

PSPE22

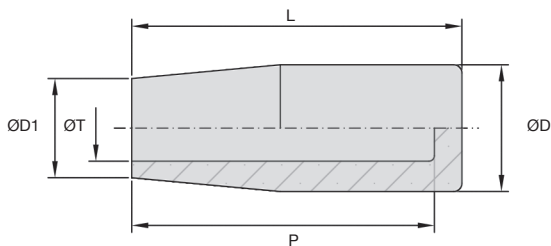
For shafts Ø7 to Ø14

Conical handle

- Smooth blind hole
- Working T°: 0°C to +70°C
- Material:
Black PVC

Assembly

- Fit using a mallet, no adhesive required



DISCOUNTS

Qty	1+	60+	100+	200+
Disc. List	-	-5%	-10%	On request

Part number	ØD	ØD1	ØT	L	P	Weight (g)	Stock*	Price each
								1 to 59
PSPE22-60-7	22	17	7	60	58	24	-	2,76 €
PSPE22-60-8	22	17	8	60	58	23	-	2,58 €
PSPE22-60-9	22	17	9	60	58	23	-	2,49 €
PSPE22-60-10	22	17	10	60	58	22	-	2,43 €
PSPE22-60-12	22	17	12	60	58	21	-	2,31 €
PSPE22-60-14	22	17	14	60	58	20	-	2,25 €

*Depending on availability - Dimensions in mm

Flexible tube handle

For tubes Ø12 to Ø22

PSPD18

Knurled cylindrical handle

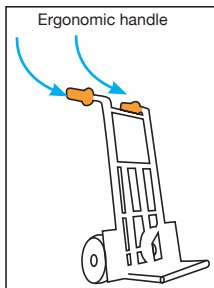
- Smooth blind hole
- Working T°: 0°C to +70°C
- Material:
Black PVC

Assembly

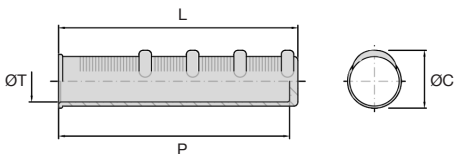
- Fit using a mallet, no adhesive required

Advantages

- Ergonomic handle for excellent grip



Typical application



DISCOUNTS

Qty	1+	60+	100+	200+
Disc.	List	-5%	-10%	On request

Part number	L	ØT	ØC	P	Weight (g)	Stock*	Price each 1 to 59
PSPD18-118-12	118	12	28	113	52	-	4,14 €
PSPD18-118-14	118	14	28	113	45	-	3,84 €
PSPD18-118-16	118	16	28	113	40	-	3,54 €
PSPD18-118-18	118	18	28	113	35	-	3,18 €
PSPD18-118-20	118	20	28	113	28	-	2,43 €
PSPD18-118-21	118	21	28	113	26	-	2,25 €
PSPD18-118-22	118	22	28	113	22	-	2,07 €
PSPD18-118-22L	118	22	28	113	19	-	2,13 €

*Depending on availability - Dimensions in mm

Flexible tube handle

PSPD40

For tubes Ø18 and Ø22

Knurled cylindrical handle

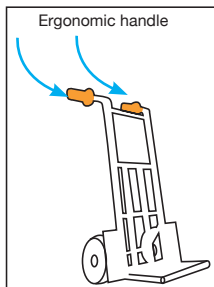
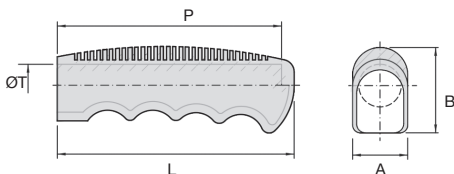
- Smooth blind hole
- Working T°: 0°C to +70°C
- Material:
Black PVC

Assembly

- Fit using a mallet, no adhesive required

Advantages

- Ergonomic handle for excellent grip



Typical application

DISCOUNTS

Qty	1+	60+	100+	200+
Disc.	List	-5%	-10%	On request

Part number	L	A	B	ØT	P	Weight (g)	Stock*	Price each 1 to 59
PSPD40-112-18	112	26	40	18	106	49	-	4,59 €
PSPD40-112-22	112	26	40	22	106	47	-	4,59 €

*Depending on availability - Dimensions in mm

Our other products



CHTRB

Single and dual output gearboxes, Up to 16,5 Nm



MFBS

Stainless steel flexible bellows coupling, Stainless steel - with se...



CHMX_CHMDX

Shaft for worm and wheel reducer CHMR and CHM, CHMR and CHM gearbox...



LVT

Miniature motorised actuator 1A, 1 amper



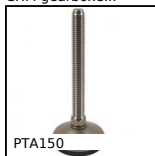
GBMz

Cylindrical ballscrew nut, Cylindrical nut - Multiple starts



LVT

Miniature motorised actuator 2A, 2 amper



PTA150

Articulated levelling foot, pressed base Ø150, Ø 150



RTTss

Locking assembly, Medium/high torque



SEV

Vertical stirrup toggle clamp, Vertical Latch Clamp - steel



PR821

Idler sprocket for slat top chain, Ranges 821 and 805



RMSA

Adjustable shock-absorber, Adjustable



AT5M AT10M

AT type timing belt per metre, AT10 Steel cored polyurethane

Complementary products



PSPD18

Flexible tube handle, Black PVC



PSPT

Flexible tube handle, PVC



PSPD40

Flexible tube handle, Black PVC



PSPPE22

Flexible shaft handle Ø22, Black PVC