

Flexible tube handle



PSPT

For Ø18 - Ø33 tubes

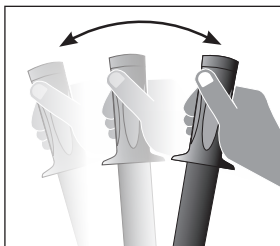
- Tube handle with collar
- Smooth interior
- Material:
Black PVC

Assembly

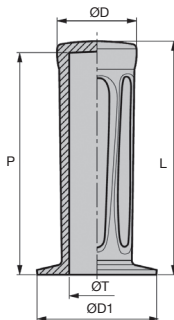
- Fit using a mallet,
no adhesive required

Advantages

- Resists oil, shocks and low temperatures



Typical application



DISCOUNTS

Qty	1+	60+	100+	200+
Disc.	List	-5%	-10%	On request

Part number	Tube		ØD	ØD1	P	Weight (g)	Stock*	Price each 1 to 59
	ØT	L						
PSPT18-115	18-19	115	31	44	110	62	✓	3,15 €
PSPT20-115	20-21	115	31	44	110	56	✓	2,79 €
PSPT22-115	22-23	115	31	44	110	46	✓	2,42 €
PSPT24-125	24-25	125	36	49	120	72	✓	3,60 €
PSPT26-125	26	125	36	49	120	60	✓	3,15 €
PSPT27-125	27-28	125	36	49	120	50	✓	3,03 €
PSPT29-125	29	125	36	49	120	50	✓	3,03 €
PSPT30-130	30	130	42	51	125	92	✓	3,60 €
PSPT33-130	33	130	42	51	125	74	✓	3,15 €

*Depending on availability - Dimensions in mm

Conical flexible shaft handle Ø20

For shafts Ø6 to Ø12

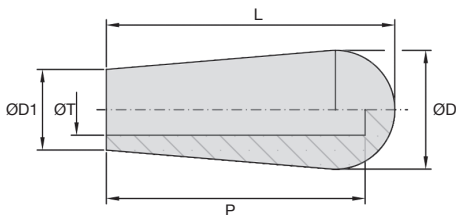
PSPE20

Conical handle

- Smooth blind hole
- Working T°: 0°C to +70°C
- Material:
Black PVC

Assembly

- Fit using a mallet, no adhesive required



DISCOUNTS

Qty	1+	60+	100+	200+
Disc. List	-5%	-10%	On request	

Part number	ØD	ØD1	ØT	L	P	Weight (g)	Stock*	Price each 1 to 59
PSPE20-43-6	20	14	6	43	40	11	-	1,74 €
PSPE20-43-7	20	14	7	43	40	10	-	1,65 €
PSPE20-43-8	20	14	8	43	40	10	-	1,59 €
PSPE20-43-10	20	14	10	43	40	9	-	1,53 €
PSPE20-43-12	20	14	12	43	40	8	-	1,47 €

*Depending on availability - Dimensions in mm

Conical flexible shaft handle Ø22

PSPE22

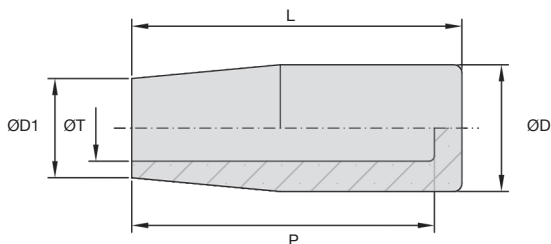
For shafts Ø7 to Ø14

Conical handle

- Smooth blind hole
- Working T°: 0°C to +70°C
- Material:
Black PVC

Assembly

- Fit using a mallet, no adhesive required



DISCOUNTS

Qty	1+	60+	100+	200+
Disc.	List	-5%	-10%	On request

Part number	ØD	ØD1	ØT	L	P	Weight (g)	Stock*	Price each
							1 to 59	
PSPE22-60-7	22	17	7	60	58	24	-	2,76 €
PSPE22-60-8	22	17	8	60	58	23	-	2,58 €
PSPE22-60-9	22	17	9	60	58	23	-	2,49 €
PSPE22-60-10	22	17	10	60	58	22	-	2,43 €
PSPE22-60-12	22	17	12	60	58	21	-	2,31 €
PSPE22-60-14	22	17	14	60	58	20	-	2,25 €

*Depending on availability - Dimensions in mm

Flexible tube handle

For tubes Ø12 to Ø22

PSPD18

Knurled cylindrical handle

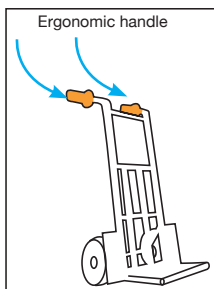
- Smooth blind hole
- Working T°: 0°C to +70°C
- Material:
Black PVC

Assembly

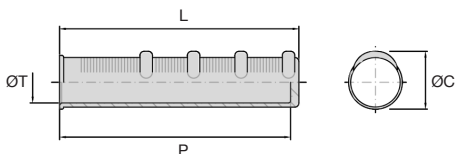
- Fit using a mallet, no adhesive required

Advantages

- Ergonomic handle for excellent grip



Typical application



DISCOUNTS

Qty	1+	60+	100+	200+
Disc.	List	-5%	-10%	On request

Part number	L	ØT	ØC	P	Weight (g)	Stock*	Price each 1 to 59
PSPD18-118-12	118	12	28	113	52	-	4,14 €
PSPD18-118-14	118	14	28	113	45	-	3,84 €
PSPD18-118-16	118	16	28	113	40	-	3,54 €
PSPD18-118-18	118	18	28	113	35	-	3,18 €
PSPD18-118-20	118	20	28	113	28	-	2,43 €
PSPD18-118-21	118	21	28	113	26	-	2,25 €
PSPD18-118-22	118	22	28	113	22	-	2,07 €
PSPD18-118-22L	118	22	28	113	19	-	2,13 €

*Depending on availability - Dimensions in mm

Flexible tube handle

PSPD40

For tubes Ø18 and Ø22

Knurled cylindrical handle

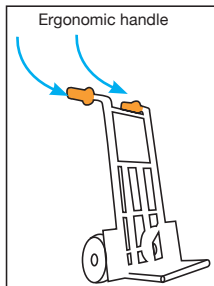
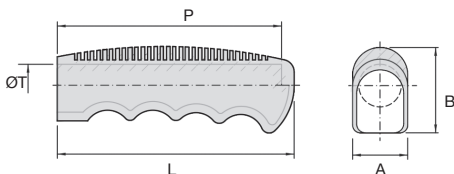
- Smooth blind hole
- Working T°: 0°C to +70°C
- Material:
Black PVC

Assembly

- Fit using a mallet, no adhesive required

Advantages

- Ergonomic handle for excellent grip



Typical application

DISCOUNTS

Qty	1+	60+	100+	200+
Disc.	List	-5%	-10%	On request

Part number	L	A	B	ØT	P	Weight (g)	Stock*	Price each 1 to 59
PSPD40-112-18	112	26	40	18	106	49	-	4,59 €
PSPD40-112-22	112	26	40	22	106	47	-	4,59 €

*Depending on availability - Dimensions in mm

Our other products



M1

Worm gear - precision range, Hardened steel



SH3

Parallel axis helical gear, Machined plastic (delrin)



EMAS

Antistatic knurled nut, Antistatic



DOMI_MD

Domino rotary table, 55/1



PSG08S

Spur gear - precision range, Stainless steel 303



LRM2

Cylindrical bronze nut, Bronze - 2 threads



VTHA

Magnetic screw with hexagonal head, Steel



AT5M AT10M

AT type timing belt per metre, AT5 Steel cored polyurethane



TBbutee

Axial thrust bearing, Steel balls



EP7

Electronic digital position indicator, 5



NCT

Square tube connector, Fixed



GSA_A

Adjustable gas spring, Steel

Complementary products



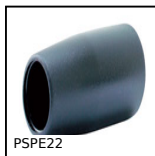
PSPD18

Flexible tube handle, Black PVC



PSPT

Flexible tube handle, PVC



PSPE22

Conical flexible shaft handlee Ø22, Black PVC



PSPE20

Conical flexible shaft handle Ø20, Black PVC