

# Flexible tube handle



## PSPT

For Ø18 - Ø33 tubes

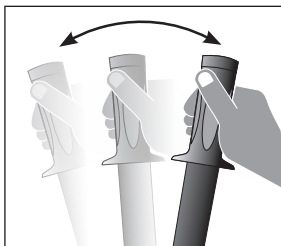
- Tube handle with collar
- Smooth interior
- Material:  
Black PVC

### Assembly

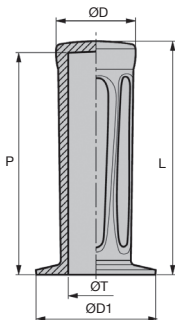
- Fit using a mallet,  
no adhesive required

### Advantages

- Resists oil, shocks and low temperatures



Typical application



### DISCOUNTS

Qty	1+	60+	100+	200+
Disc.	List	-5%	-10%	On request

Part number	Tube		ØD	ØD1	P	Weight (g)	Stock*	Price each 1 to 59
	ØT	L						
PSPT18-115	18-19	115	31	44	110	62	✓	3,15 €
PSPT20-115	20-21	115	31	44	110	56	✓	2,79 €
PSPT22-115	22-23	115	31	44	110	46	✓	2,42 €
PSPT24-125	24-25	125	36	49	120	72	✓	3,60 €
PSPT26-125	26	125	36	49	120	60	✓	3,15 €
PSPT27-125	27-28	125	36	49	120	50	✓	3,03 €
PSPT29-125	29	125	36	49	120	50	✓	3,03 €
PSPT30-130	30	130	42	51	125	92	✓	3,60 €
PSPT33-130	33	130	42	51	125	74	✓	3,15 €

\*Depending on availability - Dimensions in mm

# Conical flexible shaft handle Ø20

For shafts Ø6 to Ø12

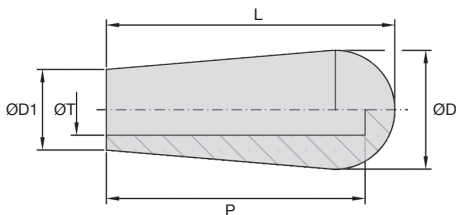
PSPE20

## Conical handle

- Smooth blind hole
- Working T°: 0°C to +70°C
- Material:  
Black PVC

## Assembly

- Fit using a mallet, no adhesive required



## DISCOUNTS

Qty	1+	60+	100+	200+
Disc. List	-5%	-10%	On request	

Part number	ØD	ØD1	ØT	L	P	Weight (g)	Stock*	Price each 1 to 59
PSPE20-43-6	20	14	6	43	40	11	-	1,74 €
PSPE20-43-7	20	14	7	43	40	10	-	1,65 €
PSPE20-43-8	20	14	8	43	40	10	-	1,59 €
PSPE20-43-10	20	14	10	43	40	9	-	1,53 €
PSPE20-43-12	20	14	12	43	40	8	-	1,47 €

\*Depending on availability - Dimensions in mm

# Conical flexible shaft handle Ø22

## PSPE22

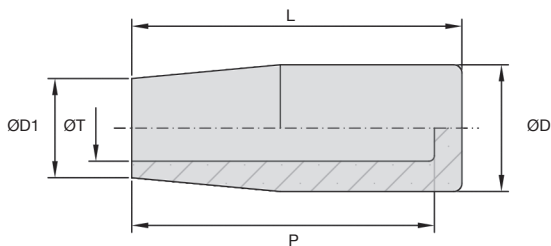
For shafts Ø7 to Ø14

### Conical handle

- Smooth blind hole
- Working T°: 0°C to +70°C
- Material:  
Black PVC

### Assembly

- Fit using a mallet, no adhesive required



### DISCOUNTS

Qty	1+	60+	100+	200+
Disc. List	-	-5%	-10%	On request

Part number	ØD	ØD1	ØT	L	P	Weight (g)	Stock*	Price each
							1 to 59	
PSPE22-60-7	22	17	7	60	58	24	-	2,76 €
PSPE22-60-8	22	17	8	60	58	23	-	2,58 €
PSPE22-60-9	22	17	9	60	58	23	-	2,49 €
PSPE22-60-10	22	17	10	60	58	22	-	2,43 €
PSPE22-60-12	22	17	12	60	58	21	-	2,31 €
PSPE22-60-14	22	17	14	60	58	20	-	2,25 €

\*Depending on availability - Dimensions in mm

# Flexible tube handle

For tubes Ø12 to Ø22

PSPD18

## Knurled cylindrical handle

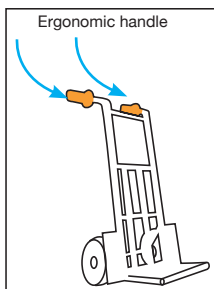
- Smooth blind hole
- Working T°: 0°C to +70°C
- Material:  
Black PVC

## Assembly

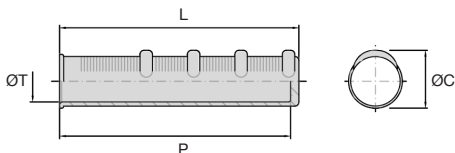
- Fit using a mallet, no adhesive required

## Advantages

- Ergonomic handle for excellent grip



Typical application



## DISCOUNTS

Qty	1+	60+	100+	200+
Disc.	List	-5%	-10%	On request

Part number	L	ØT	ØC	P	Weight (g)	Stock*	Price each 1 to 59
PSPD18-118-12	118	12	28	113	52	-	4,14 €
PSPD18-118-14	118	14	28	113	45	-	3,84 €
PSPD18-118-16	118	16	28	113	40	-	3,54 €
PSPD18-118-18	118	18	28	113	35	-	3,18 €
PSPD18-118-20	118	20	28	113	28	-	2,43 €
PSPD18-118-21	118	21	28	113	26	-	2,25 €
PSPD18-118-22	118	22	28	113	22	-	2,07 €
PSPD18-118-22L	118	22	28	113	19	-	2,13 €

\*Depending on availability - Dimensions in mm

# Flexible tube handle

## PSPD40

## For tubes Ø18 and Ø22

### Knurled cylindrical handle

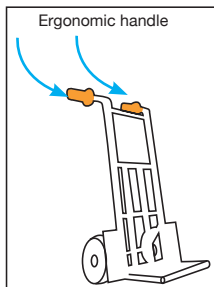
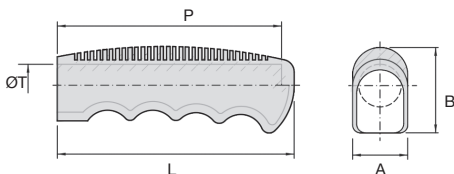
- Smooth blind hole
- Working T°: 0°C to +70°C
- Material:  
Black PVC

### Assembly

- Fit using a mallet, no adhesive required

### Advantages

- Ergonomic handle for excellent grip



Typical application

### DISCOUNTS

Qty	1+	60+	100+	200+
Disc. List	-5%	-10%	On request	

Part number	L	A	B	ØT	P	Weight (g)	Stock*	Price each 1 to 59
PSPD40-112-18	112	26	40	18	106	49	-	4,59 €
PSPD40-112-22	112	26	40	22	106	47	-	4,59 €

\*Depending on availability - Dimensions in mm

## Our other products



G3-ECO

Eco range Spur gear,  
Steel C45



EBH

Cap nut Hygienic  
Design®, With collar



OP3\_14\_06

Reducing sleeve for  
OP indicators,  
Reduction socket



PRES2HR

Manual workbench  
press, Force up to  
200kg



V3RA\_PT

3-spoked handwheel  
with handle,  
Polyamide



AC156-157

Strike for toggle latch,  
25.5mm



ZG1

Plastic spur gear,  
Machined plastic  
(delrin)



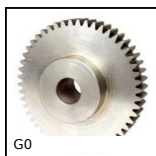
CHAR

Spring hinge, screwed



OP3

Mechanical digital  
position indicator, 4  
numbers



G0

Steel spur gear, Steel  
20NCD2



UGAC\_UGET

Connection for  
threaded actuator  
rod, Connection for



RBGpl

Fixed castor with  
plate, Steel - grey  
rubber

## Complementary products



PSPT

Flexible tube handle,  
PVC



PSPD40

Flexible tube handle,  
Black PVC



PSPE22

Conical flexible shaft  
handlee Ø22, Black  
PVC



PSPE20

Conical flexible shaft  
handle Ø20, Black  
PVC