

Security pull hand

PSEC

Thermoplastic

Gripping handle for both pushing and pulling

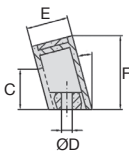
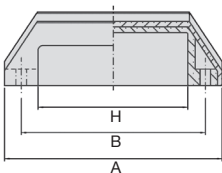
- Blind handle, without finger hole
- Fixing with screws (not supplied)
- Working T°: -20°C to +110°C
- Material:
 - Glass fiber reinforced black thermoplastic PP
 - Orange cap RAL2004

Advantages

- The shape of the handle prevents the complete passage of the fingers and thus protects them from a shearing effect



Evite les pincements



DISCOUNTING

Qty	1+	6+	20+	50+	100+	250+
Disc.	List	-5%	-10%	-15%	-20%	On request

Référence	B	A	E	F	C	H	ØD	Weight (g)	Stock*	Price each 1 à 5
PSEC110-6	110+/-1	128	25	44	24	85	6,5	62	-	6,24 €

*Depending on availability - Dimensions in mm

HPC

CAT NEW
01/2023

www.hpceurope.com

Tel. +33(0)4 37 496 496

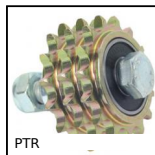
Our other products



BS2
Panamech, Multi-Beam, Aluminium - with set screw



PSPE22
Conical flexible shaft handlelee Ø22, Black PVC



PTR
Idler chain sprocket, For standard applications



PLM-SC
Magnetic stud with central countersunk hole, With milled bore



GPLbr
Brush, brass



RFK48C
Hypoid gearbox - Stainless steel, up to 350 Nm



PTA50ssEB
Articulated foot with sheet metal base Ø50, Articulated foot



ZDB
Machined plastic bevel gear , 2:1



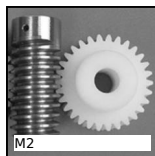
RAG-12-M8
Roller guide accessory, Anchoring system



H0
Crossed helical gear crossed axis at 90°, Steel 20NCD2



GAL22
Conveyor wheel, Zinc plated steel



M2
Worm and wheel set, Machined plastic (delrin)

Complementary products



PAP
Handle for aluminium profile, Ergonomic handle



PAP
Handle for aluminium profile, Ergonomic handle



PO
Pull handle - Multi-sector, Smooth hole



PO
Pull handle - Multi-sector, Tapped recessed insert