

# Security pull hand

## PSEC

## Thermoplastic

### Gripping handle for both pushing and pulling

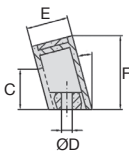
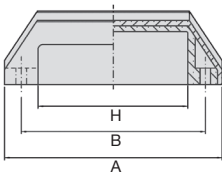
- Blind handle, without finger hole
- Fixing with screws (not supplied)
- Working T°: -20°C to +110°C
- Material:
  - Glass fiber reinforced black thermoplastic PP
  - Orange cap RAL2004

### Advantages

- The shape of the handle prevents the complete passage of the fingers and thus protects them from a shearing effect



Evite les pincements



### DISCOUNT

Qty	1+	6+	20+	50+	100+	250+
Disc.	List	-5%	-10%	-15%	-20%	On request

Référence	B	A	E	F	C	H	ØD	Weight (g)	Stock*	Price each 1 à 5
PSEC110-6	110+/-1	128	25	44	24	85	6,5	62	-	6,24 €

\*Depending on availability - Dimensions in mm

## Our other products



CABma

Swaging sleeve for fitting cable, To crimp a wire rope



PW\_PWG3

Worm - precision range, Steel



CLAT

Clamping lever Hygienic Usit® - male, Stainless steel



GE\_ES\_2RS

Spherical bushing, Steel / steel with seals



CPAS-H

Folding bracket, For heavy loads



DIA

Ring operated locking bolt, with ring



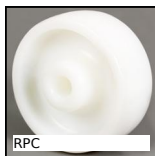
INO

Internal gear, Steel 20NCD2



TCXR

Automatic chain tensioner, With stainless steel sprocket



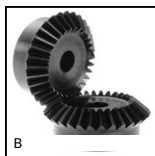
RPC

Wheel, Polyamide



PFC

Fixed rubber levelling foot, Levelling support



B

Steel bevel gear, 1:1



PGT

Sliding profile, Sliding panel support

## Complementary products



PAP

Handle for aluminium profile, Ergonomic handle



PAP

Handle for aluminium profile, Ergonomic handle



PO

Pull handle - Multi-sector, Smooth hole



PO

Pull handle - Multi-sector, Tapped recessed insert