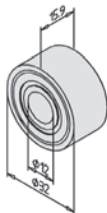
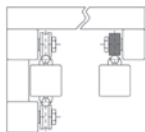


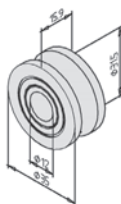
# Roller wheel for aluminium profile

## Roller for linear guiding shaft **MiniTec** PRFGAL

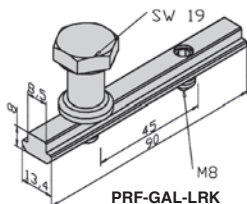
- **Guiding wheel**
- Double row bearing
- Roller PRF-GAL can compensate for small amounts of backlash for parallel working guidance systems
- PRF-GAL-12 is used with a Ø12mm guide shaft such as Z-12-3000A or Z-12-3000B
- Material: steel



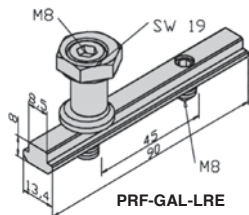
PRF-GAL



PRF-GAL-12



PRF-GAL-LRK



PRF-GAL-LRE



PRF-GAL-LRK

PRF-GAL-LRE

### DISCOUNTS

Qty	1+	50+	100+
Disc.	List	-5%	On request

Part number	Profile	Static (N)	Load Dynamic(N)	Weight (kg)	Stock*	Price each 1 to 49
<b>Roller</b>						
PRF-GAL	Flat	5100	8600	0,060	-	29,89 €
PRF-GAL-12	Concave Ø12	6000	10500	0,068	✓	22,19 €
<b>Fixing kit for roller</b>						
PRF-GAL-LRK	concentric	-	-	0,100	✓	13,88 €
PRF-GAL-LRE	Eccentric	-	-	0,100	✓	17,24 €

\*Depending on availability - Dimensions in mm

## Our other products



PTR

Idler chain sprocket,  
For standard  
applications



BPPss

Pressed stainless  
steel pillow block,  
Stainless steel



TBEBASE

Base plate for  
economic mini-table,  
Allows X-Y cross  
tables



SHTP

Drylin® Linear table,  
Economy range



CHAC4040NP

Square hinge with  
riveted pin, not  
drilled, Square with  
riveted pin,...



COA-COG

Surface mounting  
plate, Surface  
mounting plate for  
clevis



VTAP

Magnetic head screw,  
With rubber coating  
With rubber coating



CABtool

Fitting cable tools,  
Cutting tools



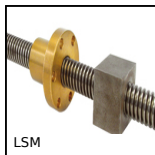
PSG05HC

Skive hobbed spur  
gears - precision  
range, Case hardened



TMR

Rigid manual  
tensioner, Adjustable



LSM

Stainless steel 316L  
leadscrew, Stainless  
steel - 1 thread



TCXR

Automatic chain  
tensioner, With steel  
sprocket

## Complementary products



PRF\_GAL

Roller for aluminium  
profile, Fixing kit for  
roller concentric



PRF\_GAL

Roller for aluminium  
profile, Fixing kit for  
roller eccentric