

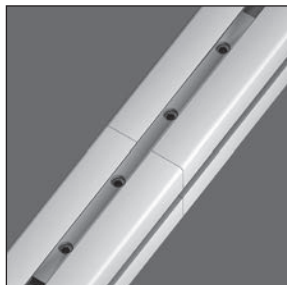
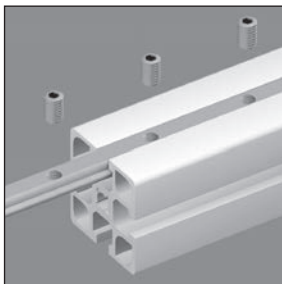
- Material: electroplated steel
- 4 electroplated M8 x14mm grub screws (use SW4 hexagonal key or PRF-TOOL-H4 tool)

Uses

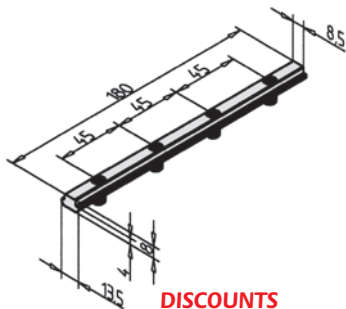
- For but joining profiles.
- For creating longer profiles

Assembly

- Simply twist into slot in profile
- No preparation required
- For long profiles or to support heavier loads, use more joining bars.



Typical application



DISCOUNTS

Qty	1+	50+	100+
Disc.	List	-5%	On request

Part number	Type	Weight (kg)	Stock*	Price each 1 to 49
PRF-ER-180	Joining bar	0,12	✓	11,61 €

*Depending on availability - Dimensions in mm

Our other products



CLB_T

Die cast zinc clamping lever - male, Zamak



GB-RA

Brass spur gear, Brass CuZn39Pb3



E60

Right angle helical reducers, from 4.50 to 62 Nm



PRF_BASE

Base plate for aluminium profile, Base plate



SA_SAKH

Housing for linear bearing, Closed - light load



CHB

Worm and wheel gear reducer, up to 41 Nm



ZBconique

Machined plastic bevel gear, 1:1



GCB880

Curved track for slat top chain, Ranges 880 and 881



T10-BAR

T type tooth bar stock, T10



AT5-16ECO

AT type timing pulley, Economy range - AT5



BAC105

Storage bin, 8mm



CHAE6555

Decorative screwed hinge, Aluminium

Complementary products



PRF4545

Standard aluminium profile, 45 x 45 mm