

# Fixable articulated foot Ø123

Stock Ste Sta

## PR125

## Maximum load 35,000N

- Levelling foot
- Non slip base
- Materials:  
Base: Black glass reinforced polyamide (Shore 70)  
Spindle: Zinc plated steel or stainless steel 304  
(nut not supplied)

### Advantages

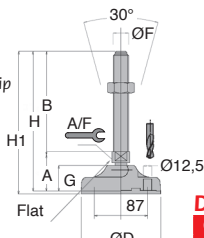
- Articulated rod allows auto-alignment with the ground
- Sole material ensures flexibility and grip

### Accessories

- Extension for articulated foot  
PR125-ENT (p.27)

### Info.

- Values given for static loads will be reduced in case of a vibrating load



With non-slip base



### DISCOUNTS

Qty	1+	20+	50+
Disc.	List -10%	On request	

Part number	ØD	Thread	B	A	A/F	G	H	H1	Static load (N)	Price each	
										Stock*	1 to 19
<b>Steel spindle</b>											
PR125-16-75	123	M16	75	57	20	37	132	133	35000	✓	21,89 €
PR125-16-150	123	M16	150	57	20	37	207	208	35000	✓	25,75 €
PR125-16-225	123	M16	225	57	20	37	282	285	35000	✓	30,10 €
PR125-20-125	123	M20	125	57	20	37	182	185	35000	✓	21,77 €
PR125-20-200	123	M20	200	57	20	37	257	260	35000	✓	25,42 €
PR125-20-250	123	M20	250	57	20	37	307	310	35000	✓	29,87 €
PR125-24-125	123	M24	125	57	20	37	182	185	35000	✓	21,77 €
PR125-24-200	123	M24	200	57	20	37	257	260	35000	✓	25,42 €
PR125-24-250	123	M24	250	57	20	37	307	310	35000	✓	29,87 €
PR125-30-125	123	M30	125	58	26	37	183	186	35000	✓	23,38 €
PR125-30-200	123	M30	200	58	26	37	258	261	35000	✓	27,97 €
PR125-30-250	123	M30	250	58	26	37	308	311	35000	-	31,13 €
<b>Stainless steel spindle</b>											
PR125-16-75/SS	123	M16	75	57	20	37	132	135	35000	-	37,74 €
PR125-16-150/SS	123	M16	150	57	20	37	207	210	35000	✓	48,48 €
PR125-16-225/SS	123	M16	225	57	20	37	282	285	35000	-	61,20 €
PR125-20-125/SS	123	M20	125	57	20	37	182	185	35000	✓	44,91 €
PR125-20-200/SS	123	M20	200	57	20	37	257	260	35000	✓	57,38 €
PR125-20-250/SS	123	M20	250	57	20	37	307	310	35000	-	65,97 €
PR125-24-125/SS	123	M24	125	57	20	37	182	185	35000	-	44,91 €
PR125-24-200/SS	123	M24	200	57	20	37	257	260	35000	-	51,18 €
PR125-24-250/SS	123	M24	250	57	20	37	307	310	35000	-	65,97 €
PR125-30-125/SS	123	M30	125	58	26	37	183	186	35000	-	50,96 €
PR125-30-200/SS	123	M30	200	58	26	37	258	261	35000	-	65,06 €
PR125-30-250/SS	123	M30	250	58	26	37	308	311	35000	-	74,14 €

\*Depending on availability - Dimensions in mm

# Extension for articulated foot Ø123

For articulated foot PR125

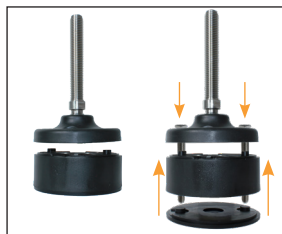
PR125

## Extension with mounting holes for articulated feet PR125

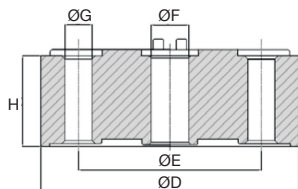
- Material  
Polyamide
- Delivered without anti-slip rubber pad
- Suitable for any type of floor

### Advantages

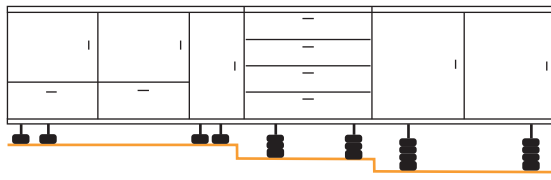
- Easily compensates for large differences in floor level



**Assembly example**  
(screws not included)



### Application example



### DISCOUNTS

Qty	1+	20+	50+
Disc.	List -10%	On request	

Part number	ØD	ØE	H	ØG	ØF	Static load (N)	Stock*	Price each 1 à 19
PR125-ENT	123	87	43	13	18	35000	-	13,44 €

\*Dans la limite du disponible - Dimensions en mm

## Our other products



JCDss  
Double universal joint  
- Stainless steel, Low  
duty



GE  
Toggle latches,  
Miniature



PSPE20  
Conical flexible shaft  
handle Ø20, Black  
PVC



HDSS  
Needle roller double  
universal joint -  
Stainless steel, Heavy  
duty



AT5P\_AT10P  
Connecting plate for  
AT type timing belts,  
AT10



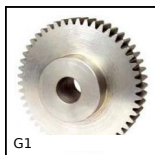
CDR  
Retaining cable for  
ball pin, Retaining  
cable



DOMI50  
Domino 50 adjustable  
slide, Slide DOMILINE  
50 with counter and  
handw...



PTAF80-PAMF80  
Articulated fixable  
foot with pressed  
base Ø80, Ø 80



G1  
Steel spur gear, Steel  
20NCD2



R206  
Die spring ISO10243,  
Extra-heavy



SUPCC  
Self-centering  
clamping hub steel,  
With lock nut



VTSM  
Ball head screws  
Hygienic Design®,  
Stainless steel

## Complementary products



PR65C  
Half-articulated foot Ø  
65, Ø 65



PR125rehausse  
Extension for  
articulated foot Ø123,  
articulated foot PR125