

Pad eye on square mounting plate **Sta**

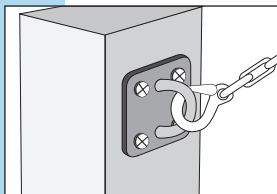
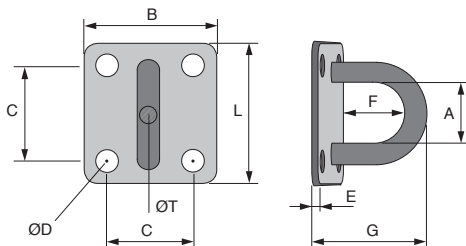
PPCSS

Stainless steel

- Screwed mounting plate

- Material:

316 stainless steel



Typical application

DISCOUNTS

Qty	1+	20+	40+	60+	80+	100+
Disc.	List	-5%	-10%	-15%	-20%	On request

Part number	ØT	A	B	L	ØD	C	E	F	G	Weight (kg)	Stock*	Price each 1 to 19
PPC5-16/SS	5	16	30	35	5	19	2,8	15	23	0,027	-	3,75 €
PPC6-20/SS	6	20	35	40	5,5	24	2,8	17	26	0,040	✓	5,02 €
PPC8-23/SS	8	23	40	50	5,5	29	2,8	21	32	0,068	✓	7,80 €

Dimensions in mm

Our other products



PW_PWG25
Worm - precision range, Steel



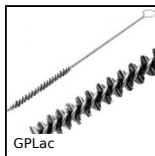
ACM_DZ
Clip for bonnet fastener, Clip



VTLF
3 lobed handle, Polyamide - Brass



RFK58C
Hypoid gearbox - Stainless steel, up to 500 Nm



GPLac
Brush, steel



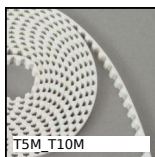
AC
Strike for toggle latch, 12mm



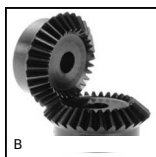
BTC_M
End cap with threaded insert for square tube, With threaded insert



RJA10_03
Sealing strip, Clamping



T5M_T10M
T type timing belt per metre, T5 Steel cored polyurethane



B
Steel bevel gear, 1:1

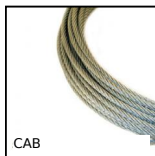


VELM6
Screw-on base for hook-and-loop strip, Polyamide



SLBWSS
Indexing plunger, weldable, Weldable - Stainless steel

Complementary products



CAB
Stainless steel cable, Stainless steel



MACss
Stainless steel carabiner, Stainless steel



SCA_SS
Stainless steel flat cable clamp, Stainless steel



TAC_SS
Stainless steel rigging screw (hook/eye), Stainless steel