

# Pad eye on square mounting plate **Sta**

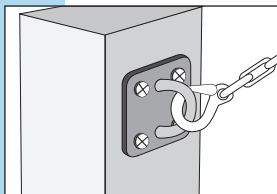
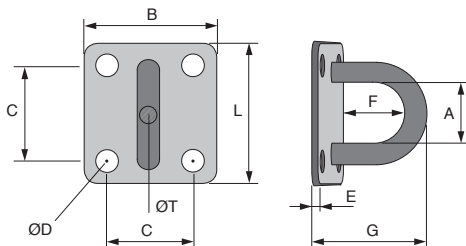
## PPCSS

## Stainless steel

- Screwed mounting plate

- Material:

316 stainless steel



Typical application

### DISCOUNTS

Qty	1+	20+	40+	60+	80+	100+
Disc.	List	-5%	-10%	-15%	-20%	On request

Part number	ØT	A	B	L	ØD	C	E	F	G	Weight (kg)	Stock*	Price each 1 to 19
PPC5-16/SS	5	16	30	35	5	19	2,8	15	23	0,027	-	3,75 €
PPC6-20/SS	6	20	35	40	5,5	24	2,8	17	26	0,040	✓	5,02 €
PPC8-23/SS	8	23	40	50	5,5	29	2,8	21	32	0,068	✓	7,80 €

Dimensions in mm

## Our other products



BH01  
Single housed bearing, Bearing fitted with adhesive



VRM  
Female swivelling lifting rings, Female swivelling



EPRC  
High helix leadscrew, Cylindrical nut - up to 40mm per rotation



BCM\_CC  
Modular cylindrical brush, Horsehair bristles



AT10-32ECO  
AT type timing pulley, Economy range - AT10 aluminium



CLQassortiment  
Assorted feeler strips, Assorted feeler strips



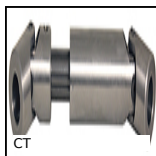
LRR  
Spring loaded latch, Spring loaded latch



PVL  
Small lobed handle, Polyamide



PAL  
Self locking counter nut, For axial locking



CT  
Telescopic universal joint, Normal duty

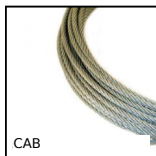


LRR-53  
Spring loaded latch, Spring return latch - steel



DKN  
Bellows coupling Gerwah®, from 0.4 to 10Nm

## Complementary products



CAB  
Stainless steel cable, Stainless steel



MACss  
Stainless steel carabiner, Stainless steel



SCA\_SS  
Stainless steel flat cable clamp, Stainless steel



TAC\_SS  
Stainless steel rigging screw (hook/eye), Stainless steel