

Rubber machine mount



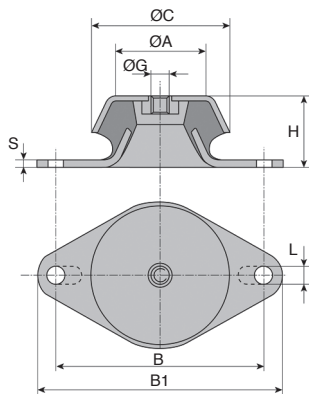
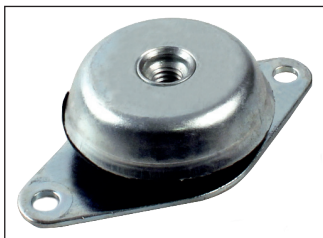
PMC

Oval base plate

- With 2 fixing holes
- Maximum loads are given for a permanent, static vertical load
- Materials:
Centre: Natural rubber (60 Shore A)
Support: steel

Uses

- Anti vibration mounting for machines and all types of motors
- Active effective protection for personnel and surroundings from harmful effects of vibrations
- Passive protection of sensitive machines, measuring instruments, equipment and many different types of machines against shocks and vibration.



Anti-vibration

DISCOUNTS

Qty	1+	6+	10+	20+
Disc.	List	-5%	-10%	On request

Part number	ØC	H	ØA	ØG	S	L	B	B1	Max. load (N)	Stock*	Price each 1 to 5
PMC48-M8	48	23	38,0	M8	1,5	6,2	68	81	1900	✓	12,58 €
PMC62-M10	62	30	50,0	M10	3,0	8,2	85	106	3900	✓	17,85 €
PMC92-M12	92	45	73,5	M12	3,0	10,2	110	128	5800	✓	24,29 €
PMC120-M16	120	50	90,0	M16	5,0	16,2	160	190	11500	-	52,58 €
PMC160-M16	160	60	120,0	M16	3,0	16,2	200	235	23000	-	83,80 €

*Depending on availability - Dimensions in mm

HPC

WEB
04/2020

www.hpceurope.com

Tél: 0 825 88 5000 Service 0,15 €/min + prix appel

Our other products



GLB
Small 6 lobe female handle,
Technopolymer -
Brass



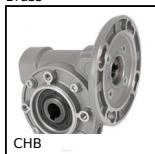
G01
Single universal joint,
Normal duty



BABT
Hardened Stainless
steel ball pin,
Hardened stainless
steel



VCMB
Dual-thread screw
wood/metal, Steel



CHB
Worm and wheel gear
reducer, up to 41 Nm



AT5P_AT10P
Connecting plate for
AT type timing belts,
AT10



BOX-TOR-ORFS
Box set of Nitrile O-
rings NBR90Sh A, 7.65
x 1.78mm to 37.82 x
1.78



BGC
Oldham coupling,
Clamp



CLM
Male clevis end,
Stainless steel short



BPP
Pressed steel flanged
bearing for light
loads, Sheet steel



RFK38B
Hypoid gearbox -
Stainless steel, up to
200 Nm



AT5courroie
AT type timing belt,
AT5 Steel cored
polyurethane

Complementary products



PMC150_M16
Anti-vibration
machine mount,
Square base plate



PCF2
Conical flexible
mount, Oval base
plate



PCF4
Conical flexible
mount, Square base
plate