



Rubber machine mount

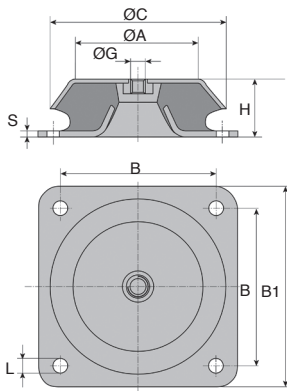
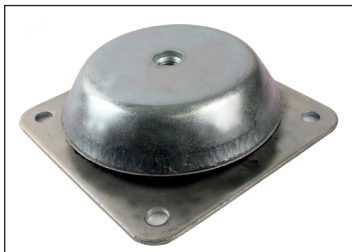
Square base plate

PMC

- With 4 fixing holes
- Maximum loads are given for a permanent, static vertical load
- Materials:
 - Centre: Natural rubber (60 Shore A)
 - Support: steel

Uses

- Anti vibration mounting for machines and all types of motors
- Active effective protection for personnel and surroundings from harmful effects of vibrations
- Passive protection of sensitive machines, measuring instruments, equipment and many different types of machines against shocks and vibration.



DISCOUNTS

| | | | | |
|-------|------|-----|------|------------|
| Qty | 1+ | 6+ | 10+ | 20+ |
| Disc. | List | -5% | -10% | On request |

| Part number | ØC | H | ØA | ØG | S | L | B | B1 | Max. load (N) | Stock* | Price each 1 to 5 |
|-------------|-----|------|-----|-----|-----|------|-----|-----|---------------|--------|-------------------|
| PMC150-M16 | 150 | 51,5 | 110 | M16 | 4,0 | 12,5 | 132 | 168 | 7800 | ✓ | 49,65 € |
| PMC177-M20 | 177 | 63,0 | 125 | M20 | 4,5 | 13,0 | 150 | 184 | 16500 | - | 72,48 € |

*Depending on availability - Dimensions in mm

Fax: 0 825 88 6000 Service 0,15€/mln + prix appel

cial2@hpceurope.com

WEB
04/2020

HPC

Our other products



PR40
Fixable articulated foot - polyamide, Ø 50



ZG1
Plastic spur gear, Machined plastic (delrin)



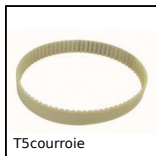
SH0
Parallel axis helical gear, Steel 20NCD2



ACLCHARJ
Hinges and joints, Adjusts in 2 directions



RBGpl
Wheel pivoting with plate, Steel - grey rubber



T5courroie
T-type timing belt, T5 Steel cored polyurethane



NRV
Orthogonal support clamp, Orthogonal support clamp



CAP880
Side flexing slim plate chain, Narrow range 880



TCL-CR
T-Clip - Aluminium profile attachment, T-Clip - Aluminium profile attachment



DB_ECO
Eco. range steel bevel gear, 2:1



MDB-MTB-ALI
Moulded plastic bevel gear (blue nylon), 2:1



PW_PWG3
Worm - precision range, Steel

Complementary products



PMC48_M8
Flexible machine mount, Oval base plate



PCF4
Conical flexible mount, Square base plate