



Rubber machine mount

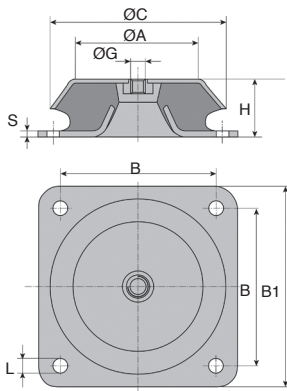
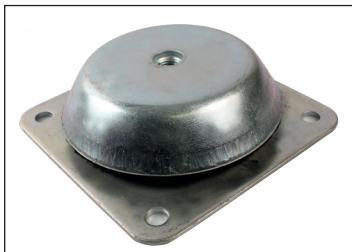
Square base plate

PMC

- With 4 fixing holes
- Maximum loads are given for a permanent, static vertical load
- Materials:
 - Centre: Natural rubber (60 Shore A)
 - Support: steel

Uses

- Anti vibration mounting for machines and all types of motors
- Active effective protection for personnel and surroundings from harmful effects of vibrations
- Passive protection of sensitive machines, measuring instruments, equipment and many different types of machines against shocks and vibration.



DISCOUNTS

Qty	1+	6+	10+	20+
Disc.	List	-5%	-10%	On request

Part number	ØC	H	ØA	ØG	S	L	B	B1	Max. load (N)	Stock*	Price each 1 to 5
PMC150-M16	150	51,5	110	M16	4,0	12,5	132	168	7800	✓	49,65 €
PMC177-M20	177	63,0	125	M20	4,5	13,0	150	184	16500	-	72,48 €

*Depending on availability - Dimensions in mm

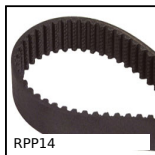
Our other products



PFM
Fixed levelling foot,
Flanged plate



SUP
Self-centering
clamping hub steel,
Without locknut



RPP14
RPP heavy duty
timing belt, RPP14



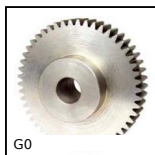
PPRss
Pad eye on mounting
plate round, Stainless
steel



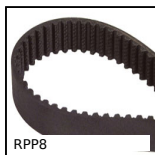
HTD8M_30
HTD Heavy duty
timing pulley, HTD8
Cast



PTAF80-PAMF80
Articulated fixable
foot with pressed
base Ø80, Ø 80



G0
Steel spur gear, Steel
20NCD2



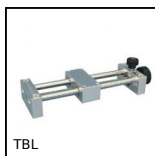
RPP8
RPP heavy duty
timing belt, RPP8



HRV
V-rail guidance
Simple Select®
system, Rail with



FAD
Threaded swivel feet,
Swivel feet without
anti-slip plate



TBL
Mini leadscrew table
with metric thread,
1kg



MHX
Hexagonal threaded
sleeve, Hexagonal -
steel

Complementary products



PMC48_M8
Anti-vibration
machine mount, Oval
base plate



PCF4
Conical flexible
mount, Square base
plate