

Worm and wheel set



Module 4.0 Worm in steel or **machined plastic**

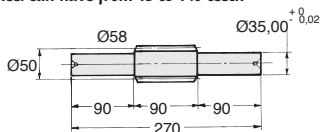
4.0

- Pitch 12.566mm
- Machined parts
- Pressure angle 20°
- Right handed lead angle
- Materials:
Worm: Steel 20NCD2 or Delrin plastic
Wheel: bronze CuAl10NiFe4 or Delrin plastic
- Delrin: Working temp. -50°C to +80°C

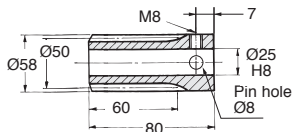


Options

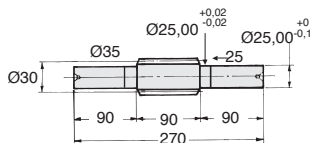
- Left handed lead angle
- **Wheel can have from 15 to 140 teeth**



Steel worm with shaft (SW)



Steel (W) or plastic* (ZW) worm with bore



Plastic worm with shaft (ZSW)

DISCOUNT Steel

Qty	1+	6+	20+	50+
Disc.	List	-12%	-25%	On request

DISCOUNT Delrin

Qty	1+	6+	30+
Disc.	List	-22%	On request

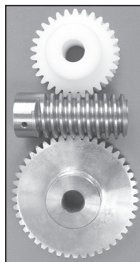
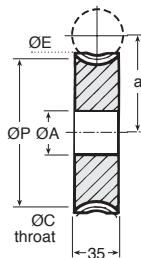
Part number		No. of starts	Lead angle	Price each 1 to 5	
Worm with bore	Worm with shaft			Worm with bore	Worm with shaft
Non hardened steel					
W4-1	SW4-1	1	4°34'	165,37 €	222,41 €
W4-2	SW4-2	2	9°50'	173,81 €	234,11 €
W4-3	SW4-3	3	13°30'	182,83 €	247,20 €
W4-4	SW4-4	4	17°45'	194,23 €	263,83 €
Hardened steel					
WH4-1	SWH4-1	1	4°34'	207,04 €	308,46 €
WH4-2	SWH4-2	2	9°50'	218,48 €	314,40 €
WH4-3	SWH4-3	3	13°30'	225,94 €	326,95 €
WH4-4	SWH4-4	4	17°45'	240,21 €	336,18 €
Delrin					
ZW4-1	ZSW4-1	1	4°34'	112,11 €	157,30 €
ZW4-2	ZSW4-2	2	9°50'	131,97 €	165,25 €
ZW4-3	ZSW4-3	3	13°30'	124,71 €	175,18 €
ZW4-4	ZSW4-4	4	17°45'	132,73 €	184,28 €

Dimensions in mm

Wheel in bronze or machined plastic Module 4.0

Info.

- Pitch 12.566mm
- To order, add the number of starts on the worm to the wheel's part number. E.g: **worm W4-1**, wheel **M4-20/1**
- The use of a delrin worm with a delrin wheel is only recommended for occasional use. The use of a delrin worm with a steel wheel is preferred.



Torque and power indication for 50 teeth at 1000 rpm (input)

WHEEL material \ WORM material	Bronze Nm (kW)	Delrin Nm (kW)
Steel	309 (0.647)	61 (0.129)
Hardened steel	417 (0.873)	-
Delrin	-	154 (0.324)

DISCOUNT Bronze

Qty	1+	6+	20+	40+
Disc.	List	-12%	-25%	On request

DISCOUNT Delrin

Qty	1+	6+	30+
Disc.	List	-22%	On request

Part number		Z	Centres				Price each 1 to 5		
Bronze	Plastic	Teeth	ØP	a	ØC	ØE	ØA	Bronze	Plastic
PM4-15	ZPM4-15	15	60	55	68	72	25	174,86 €	125,90 €
PM4-20	ZPM4-20	20	80	65	88	92	25	203,53 €	146,50 €
PM4-25	ZPM4-25	25	100	75	108	112	35	568,17 €	207,15 €
PM4-30	ZPM4-30	30	120	85	128	132	35	900,80 €	302,77 €
PM4-40	ZPM4-40	40	160	105	168	172	35	On request	On request
PM4-50	ZPM4-50	50	200	125	208	212	35	On request	On request
PM4-55	ZPM4-55	55	220	135	228	232	35	On request	On request
PM4-60	ZPM4-60	60	240	145	248	252	35	On request	On request

Wheels available up to this size

PM4-140	ZPM-140	140	Dimensions: contact us				On request	On request
---------	---------	-----	------------------------	--	--	--	------------	------------

Dimensions in mm

Our other products



GLB

Small 6 lobe threaded handle - female, Technopolymer - Brass



PSG15

Spur gear - precision range, Stainless steel 303



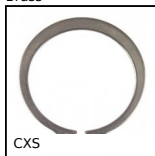
HTD5M_09

HTD Heavy duty timing pulley, HTD5 Aluminium



TBbutee

Axial thrust bearing, Steel balls



CXS

External circlip DIN471, external DIN 471



GFX

Curved tooth coupling, economy range, Steel and polyamide



ACL-FPA

Panel mounting block for aluminium structures, Support block



SBF

Sealed flange bearing unit for Food Industry, cover



HTD5M_25

HTD Heavy duty timing pulley, HTD5



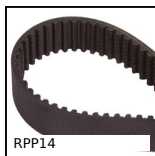
DZYSS

Stainless steel cylindrical stop



HTD5M_15

HTD Heavy duty timing pulley, HTD5



RPP14

RPP heavy duty timing belt, RPP14

Complementary products



PM4

Worm and wheel set, Non hardened steel



PM4

Worm and wheel set, Hardened steel