

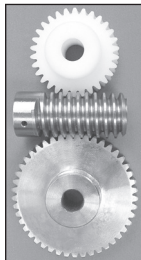
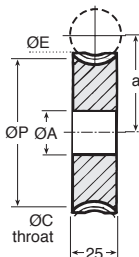
Wheel in bronze or **machined** plastic **Module 3.0**

Info.

- Pitch **9.425mm**
- To order, add the number of starts on the worm to the wheel's part number.
E.g: worm **W3-1**, wheel **M3-20/1**
- The use of a delrin worm with a delrin wheel is only recommended for occasional use. The use of a delrin worm with a steel wheel is preferred.

Torque and power indication
for 50 teeth at 1000 rpm (input)

WHEEL material	Bronze Nm (kW)	Delrin Nm (kW)
Steel	139 (0.291)	69 (0.145)
Hardened steel	200 (0.422)	-
Delrin	-	27 (0.058)



DISCOUNT Bronze

Qty	1+	6+	20+	40+
Disc.	List	-12%	-25%	On request

DISCOUNT Delrin

Qty	1+	6+	30+
Disc.	List	-22%	On request

Part number		Z	Centres					Price each 1 to 5	
Bronze	Plastic	Teeth	ØP	a	ØC	ØE	ØA	Bronze	Plastic
PM3-15	ZPM3-15	15	45	40,00	51	54	25	94,01 €	67,61 €
PM3-20	ZPM3-20	20	60	47,50	66	69	25	118,83 €	85,49 €
PM3-25	ZPM3-25	25	75	55,00	81	84	25	143,08 €	102,91 €
PM3-30	ZPM3-30	30	90	62,50	96	99	25	206,12 €	148,33 €
PM3-40	ZPM3-40	40	120	77,50	126	129	25	529,14 €	192,74 €
PM3-50	ZPM3-50	50	150	92,50	156	159	25	On request 342,19 €	
PM3-55	ZPM3-55	55	165	100,00	171	174	25	On request 397,61 €	

Wheels available up to this size

PM3-285	ZPM3-285	285	Dimensions: contact us				On request	On request
---------	----------	-----	------------------------	--	--	--	------------	------------

Dimensions in mm

Worm and wheel set



Module 3.0 Worm in steel or machined plastic

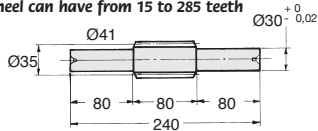


- Pitch 9.425mm
- Machined parts
- Pressure angle 20°
- Right handed lead angle
- Materials:
Worm: Steel 20NCD2 or Delrin plastic
Wheel: bronze CuAl10NiFe4 or Delrin plastic
- Delrin: Working temp. -50°C to +80°C

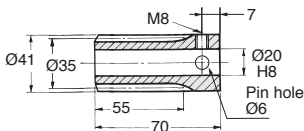


Options

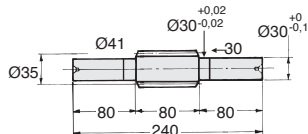
- Left handed lead angle
- Wheel can have from 15 to 285 teeth



Steel worm with shaft (SW)



Steel (W) or plastic (ZW) worm with bore



Plastic worm with shaft (ZSW)

DISCOUNT Steel

Qty	1+	6+	20+	50+
Disc.	List -12%	-25%	On request	

DISCOUNT Delrin

Qty	1+	6+	30+
Disc.	List -22%	On request	

Part number		No. of starts	Lead angle	Price each 1 to 5	
Worm with bore	Worm with shaft			Worm with bore	Worm with shaft
Non hardened steel					
W3-1	SW3-1	1	4°54'	135,87 €	194,42 €
W3-2	SW3-2	2	9°44'	140,36 €	206,38 €
W3-3	SW3-3	3	14°25'	144,53 €	215,03 €
W3-4	SW3-4	4	18°55'	150,23 €	223,53 €
Hardened steel					
WH3-1	SWH3-1	1	4°54'	174,40 €	266,15 €
WH3-2	SWH3-2	2	9°44'	179,03 €	258,67 €
WH3-3	SWH3-3	3	14°25'	188,04 €	262,86 €
WH3-4	SWH3-4	4	18°55'	195,56 €	275,97 €
Delrin					
ZW3-1	ZSW3-1	1	4°54'	107,62 €	149,58 €
ZW3-2	ZSW3-2	2	9°44'	110,75 €	155,13 €
ZW3-3	ZSW3-3	3	14°25'	113,79 €	161,43 €
ZW3-4	ZSW3-4	4	18°55'	117,87 €	167,58 €

Dimensions in mm

Our other products



Base support plate for aluminium profile, Central base fixation



Drylin@N miniature guiding system, Width 40 mm



T type timing pulley, T5 aluminium



Worm and wheel gear reducer, from 17.80 to 34 Nm



Double universal joint eco series, Low duty



Rubber latch clamp with strike plate, Lockable



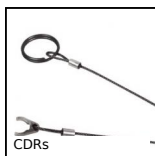
Drive sprocket for slat top chain, Range 881



Guide roller for plate chain return, Without ball bearing



PVC covered galvanised steel



Retaining cable for ball pin, Retaining



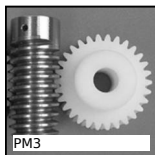
Positioning sleeve for indexing pin, For pin



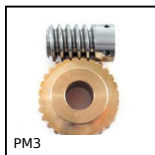
HEAVY DUTY spur gear, Steel 35NCD6

Complementary products

transparen...



Worm and wheel set, Machined plastic (delrin)



Worm and wheel set, Bronze