

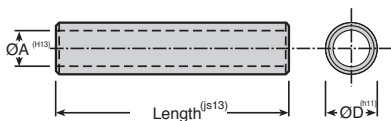
Cylindrical spacer



PLS

Stainless steel 303

- Machined pillar, female/female
- Material:
Stainless steel 303
- Sold by the packet



DISCOUNTS

No pack	1+	5+	20+	100+
Disc	List	-20%	-30%	On request

Part number	Nominal		ØA	ØD	L	Qty. per packet	Stock*	Price per packet
	ØA	ØA						
PLS3-5/B	3	3,2	6	5	20	✓	26,45 €	
PLS3-6/B	3	3,2	6	6	20	✓	27,88 €	
PLS3-8/B	3	3,2	6	8	20	✓	28,94 €	
PLS3-10/B	3	3,2	6	10	20	✓	30,88 €	
PLS3-12/B	3	3,2	6	12	20	✓	31,58 €	
PLS3-18/B	3	3,2	6	18	20	-	34,97 €	
PLS3-25/B	3	3,2	6	25	20	-	39,03 €	
PLS4-5/B	4	4,3	8	5	20	✓	28,94 €	
PLS4-6/B	4	4,3	8	6	20	✓	30,52 €	
PLS4-8/B	4	4,3	8	8	20	✓	31,77 €	
PLS4-10/B	4	4,3	8	10	20	✓	33,84 €	
PLS4-12/B	4	4,3	8	12	20	-	34,63 €	
PLS4-15/B	4	4,3	8	15	20	✓	36,61 €	
PLS4-20/B	4	4,3	8	20	20	-	39,18 €	
PLS4-25/B	4	4,3	8	25	20	✓	42,77 €	
PLS4-30/B	4	4,3	8	30	20	✓	45,75 €	

*Depending on availability - Dimensions in mm

Our other products



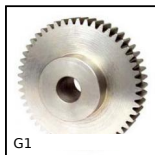
ZBconique

Machined plastic
bevel gear, 1:1



DER80

Stainless steel AC
asynchronous motor
0.55 - 0.75kW, 0.55 to
0.75kW



G1

Steel spur gear, Steel
20NCD2



PRS50

Stainless steel
articulated foot Ø50,
Ø 50



PO

Pull handle - Multi-
sector, Tapped
recessed insert



PAMF120

Articulated fixable
foot, pressed bolt-
down base Ø 120, Ø
120



DOMI120

Accessories, Clamping
lever



STC

Shock Absorber - stop
collar, Universal
flange



GTCSS

Belt tensioner, For use
in hostile
environments



PRF_SDD_1820

Support for Ø18 or
Ø20mm Prox
detector, Ø18 and



T10_21_AL

T type timing pulley,
Economy range - T10
aluminium



SDC_{ss}

Positioning sleeve for
indexing pin, For pin
Ø4 to Ø12

Complementary products



PLN

Cylindrical spacer,
Thermoplastic



PLB

Cylindrical spacer,
Brass