

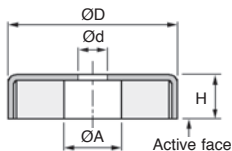
# Magnetic stud with central hole



## PLC

## Ferrite

- Cup mounted Ferrite magnet with smooth bored hole
- Working temperature: -50°C to +100°C
- Good corrosion resistance
- Good mechanical resistance



### Uses

- Mounting of objects where space is limited or mounting notice boards, protective covers etc
- Positioning of stops or inserts used in moulding machines

### DISCOUNTS

Qty	1+	6+	20+	40+	60+
Disc.	List	-15%	-20%	-30%	On request

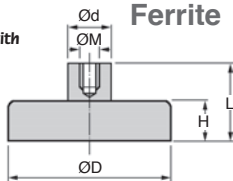
Part number	ØD	H	Ød	ØA	F (daN)	Weight (g)	Stock*	Price each 1 to 5
PLC50-10	50	10	8,5	22,0	18	85	✓	8,56 €
PLC63-14	63	14	6,5	24,0	29	197	✓	16,32 €
PLC80-18	80	18	6,5	11,5	54	458	✓	31,70 €

\*Depending on availability - Dimensions in mm

# PLT Magnetic stud with threaded hole

## Ferrite

- Cup mounted Ferrite magnet with smooth bored hole
- Working temp.: -50°C to +100°C
- Good corrosion resistance
- Good mechanical resistance



### Uses

- Fastening: protective casing, tool machines, support cables...
- Positioning: stops, inserts...
- Gripping: inaccessible places, transport

### DISCOUNTS

Qty	1+	6+	20+	40+	60+
Disc.	List	-15%	-20%	-30%	On request

Part number	ØD	L	H	Ød	ØM	F (daN)	Weight (g)	Stock*	Price each 1 to 5
PLT25-15	25	15	7	8	M4	4,0	22	✓	5,10 €
PLT32-15	32	15	7	8	M4	8,0	32	✓	6,18 €
PLT40-18	40	18	8	10	M5	12,5	60	✓	8,29 €
PLT50-22	50	22	10	12	M6	22,0	110	✓	10,05 €
PLT63-30	63	30	14	15	M8	35,0	240	✓	18,79 €
PLT80-34	80	34	18	20	M10	60,0	520	-	33,24 €
PLT100-42	100	42	22	22	M12	90,0	940	-	78,80 €

\*Depending on availability - Dimensions in mm

## Our other products



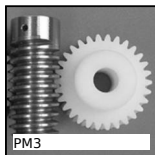
CHAE4060PA

Decorative asymmetric screwed hinges, Polyamide



BTE

Universal tension arm, For standard applications



PM3

Worm and wheel set, Machined plastic (delrin)



DEP

Tools Hygienic Usit® and Hygienic Design®, Protective insert for s...



PCS62K

Chain sprocket with hardened teeth, 15.875mm (DIN10B-1)



B\_ECO

Eco. range steel bevel gear, 1:1



HSS

Shoulder screw, Hardened Steel class 12.9



SF\_ZZ

Stainless steel ball bearings ABEC 3, Stainless steel



SA\_SAKH

Housing for linear bearing, Closed - light load



PGNT

Thermoplastic T handle, With threaded spindle



H3

Crossed helical gear, crossed axis à 90°, Steel 20NCD2



TCL

T-Clip - Aluminium profile attachment, T-Clip

### Complementary products



VAP

Magnetic stud with central hole, With central hole



PLC\_PLT

Magnetic stud with central hole, With central hole