

Handle



PHT For use in high temperatures up to 250°C

- **Heavy-duty handle, resists high temperatures**
- Working temperature:
Continuous operation: max + 150/160°C
Occasional use: + 250°C max
- Material:
Thermoplastic PPA, glass-fibre reinforced,
black finish



Applications

- Ovens
- Machines generating heat

Mounting

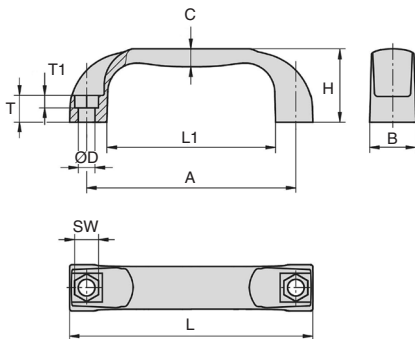
- The mounting hole allows the handle to be secured with either a cylindrical or hexagonal headed screw.
- Front or rear mounting



150°C
Continuously



250°C
For short periods



DISCOUNTS

Qty	1+	6+	20+	50+
Disc.	Net	-5%	-15%	On request

Part N°	A	B	C	ØD	H	L	L1	SW	T	T1	Load (N)	Price each
												1 to 5
PHT-117	117	26	10	9	41	136	94	13	15	8	1500	8,11 €
PHT-132	132	27	11	9	44	154	112	13	16	8	1500	12,87 €

All dimensions in mm



Handle

For use in high temperatures up to 250°C PHT_{SS}

- **Heavy-duty handle, resists high temperatures**
- Working temperature:
 - Continuous operation: max + 150/160°C
 - Occasional use: + 250°C max
- Material:
 - Thermoplastic PPA, glass-fibre reinforced, black finish
 - Threaded insert: stainless steel

Applications

- This handle is larger than most and has an ergonomic design.
- Easy to clean thanks to a closed and smooth design.
- For use in the food or medical industries.

Mounting

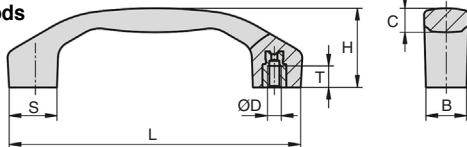
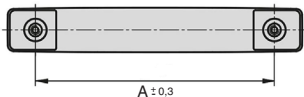
- Rear mounting



150°C
Continuously



250°C
For short periods



DISCOUNTS

Qty	1+	6+	20+	50+
Disc. Net	-5%	-15%	On request	

Part N°	A	B	C	ØD	H	L	S	T	Charge (N)	Price each
										1 to 5
PHT-100/SS	100	17	10,3	M5	34,0	122,5	20	9	1000	17,25 €
PHT-120/SS	120	21	12,4	M6	41,0	146,0	24	12	1000	20,68 €
PHT-140/SS	140	24	15,4	M8	46,5	170,0	28	12	1000	28,46 €

All dimensions in mm

Our other products



ZG0

Plastic spur gear,
Machined plastic
(delrin)



RBntc

Swivel castor with
central hole, Steel -
rubber



RIMple

Locking castor, with
mounting plate



SUP

Self-centering
clamping hub steel,
Without locknut



T5M T10M

T type timing belt per
metre, T5 Steel cored
polyurethane



PR85

Articulated foot Ø83,
Ø 83



PFC

Fixed rubber levelling
foot, Levelling support
for small parts



M0

Worm and wheel set,
Bronze



BPMc

Stainless steel slotted
spring plunger with
ceramic ball tip, 303



PCS62

Chain sprocket - steel,
15.875 (DIN 10B-1)



PSG125

Spur gear - precision
range, Pre-hardened
Steel 35NCD6



PMB

Anti-vibration
machine mount, Oval
base plate

Complementary products



PO

Pull handle - Multi-
sector, Tapped
recessed insert



PGM52-M4

Pull handle,
Aluminium



PGMT

Pull handle, Steel



PGM52-M4

Pull handle, Brass