

Handle



PHT For use in high temperatures up to 250°C

- **Heavy-duty handle, resists high temperatures**
- Working temperature:
Continuous operation: max + 150/160°C
Occasional use: + 250°C max
- Material:
Thermoplastic PPA, glass-fibre reinforced,
black finish



Applications

- Ovens
- Machines generating heat

Mounting

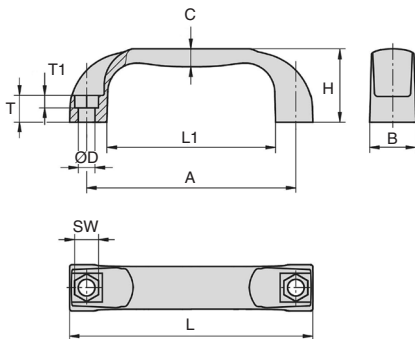
- The mounting hole allows the handle to be secured with either a cylindrical or hexagonal headed screw.
- Front or rear mounting



150°C
Continuously



250°C
For short periods



DISCOUNTS

Qty	1+	6+	20+	50+
Disc.	Net	-5%	-15%	On request

Part N°	A	B	C	ØD	H	L	L1	SW	T	T1	Load (N)	Price each
												1 to 5
PHT-117	117	26	10	9	41	136	94	13	15	8	1500	8,11 €
PHT-132	132	27	11	9	44	154	112	13	16	8	1500	12,87 €

All dimensions in mm



Handle

For use in high temperatures up to 250°C PHT_{SS}

- **Heavy-duty handle, resists high temperatures**
- Working temperature:
 - Continuous operation: max + 150/160°C
 - Occasional use: + 250°C max
- Material:
 - Thermoplastic PPA, glass-fibre reinforced, black finish
 - Threaded insert: stainless steel

Applications

- This handle is larger than most and has an ergonomic design.
- Easy to clean thanks to a closed and smooth design.
- For use in the food or medical industries.

Mounting

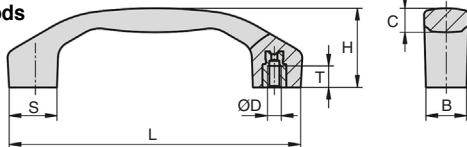
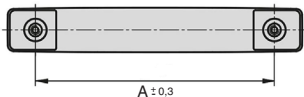
- Rear mounting



150°C
Continuously



250°C
For short periods



DISCOUNTS

Qty	1+	6+	20+	50+
Disc. Net	-5%	-15%	On request	

Part N°	A	B	C	ØD	H	L	S	T	Charge (N)	Price each
										1 to 5
PHT-100/SS	100	17	10,3	M5	34,0	122,5	20	9	1000	17,25 €
PHT-120/SS	120	21	12,4	M6	41,0	146,0	24	12	1000	20,68 €
PHT-140/SS	140	24	15,4	M8	46,5	170,0	28	12	1000	28,46 €

All dimensions in mm

Our other products



NSB
Standard linear bearing housing, Closed - Long



MAC
Carabiner DIN5299 steel, Steel



GARDLL
Mounting sleeve for lock pin, Nickel-plated steel or Stainless steel



BPP
Pressed steel flanged bearing for light loads, Sheet steel



NDS20
Double cross clamp, Parallel



VDSCB
Sliding lock adjustment system, Blocking wedge for sliding lock for ...



PENV
Recessed handle, screw fixing



T5P_T10P
Connecting plate for T type timing belts, T10



BCAss
Stainless steel splined bush, Inox



B3PAN
Panamech, Multi-Beam stainless steel, Stainless steel - with



PW_PWG05
Worm - precision range, Steel



EPRC
High helix leadscrew, Cylindrical nut - up to 40mm per rotation

Complementary products



PO
Pull handle - Multi-sector, Tapped recessed insert



PGM52-M4
Pull handle, Aluminium



PGMT
Pull handle, Steel



PGM52-M4
Pull handle, Brass