

# Module

# 0.5



# Parallel helical gear

Pre-treated or case hardened steel

- **Quality grade 7e DIN 58405 (AGMA Q10)**
- 15° Right angled helical (R in Part number)
- 15° Left angled helical (L in Part number)
- Pressure angle: 20°
- Material:
  - 35NCD6 Pre-treated steel 28HRc
  - 20NCD2 case hardened steel 58HRc
- Teeth conform to DIN 867
- Tooth thickness conforms to DIN 58405
- Efficiency approx 98%

## Options

- Alternative bores (H7)
- Keyway conforming to DIN 6885 (JS9)
- Tapped hole
- Hole for dowel pin

## Info.

- Torque figures are for 100 rpm and are given as a guide only.
- Grade and tolerances measured before heat treatment
- Important:** A 15° right angled helical gear must be used with a corresponding 15° left angled gear.
- Incompatible with SH range.



Quality grade 7e

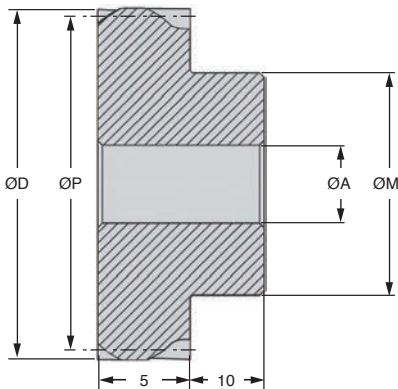
## DISCOUNTS

Qty	1+	6+	19+	50+
Disc.	List	-5%	-10%	On request

Part number		Z	ØP	ØD	ØA	ØM	Backlash	Torque (Nm)	Weight	Price each 1 to 5		
Standard	Hardened	Teeth	Pitch	External	Bore	Boss	(mm)	Standard	Hardened	Standard	Hardened	
PHG0.5-20R	PHG0.5-20RH	20	10,35	11,35	4	8	0,079 - 0,037	0,34	1,25	0,006	32,48 €	53,66 €
PHG0.5-21R	PHG0.5-21RH	21	10,87	11,87	4	8	0,079 - 0,037	0,36	1,31	0,007	32,81 €	54,22 €
PHG0.5-22R	PHG0.5-22RH	22	11,39	12,39	4	8	0,079 - 0,037	0,37	1,37	0,007	33,40 €	55,12 €
PHG0.5-23R	PHG0.5-23RH	23	11,91	12,91	4	8	0,079 - 0,037	0,39	1,43	0,007	33,73 €	55,65 €
PHG0.5-24R	PHG0.5-24RH	24	12,42	13,42	5	10	0,091 - 0,044	0,41	1,50	0,009	34,15 €	56,32 €
PHG0.5-25R	PHG0.5-25RH	25	12,94	13,94	5	10	0,091 - 0,044	0,43	1,56	0,009	34,47 €	56,91 €
PHG0.5-26R	PHG0.5-26RH	26	13,46	14,46	5	10	0,091 - 0,044	0,56	1,79	0,009	35,02 €	57,83 €
PHG0.5-27R	PHG0.5-27RH	27	13,98	14,98	5	10	0,091 - 0,044	0,58	1,86	0,010	35,32 €	58,35 €
PHG0.5-28R	PHG0.5-28RH	28	14,49	15,49	5	10	0,091 - 0,044	0,60	1,92	0,010	35,79 €	59,16 €
PHG0.5-29R	PHG0.5-29RH	29	15,01	16,01	6	13	0,091 - 0,044	0,62	1,99	0,015	35,96 €	59,34 €
PHG0.5-30R	PHG0.5-30RH	30	15,53	16,53	6	13	0,091 - 0,044	0,73	2,05	0,015	36,03 €	59,53 €
PHG0.5-32R	PHG0.5-32RH	32	16,56	17,56	6	13	0,091 - 0,044	0,78	2,19	0,016	36,84 €	60,83 €
PHG0.5-35R	PHG0.5-35RH	35	18,12	19,12	6	13	0,092 - 0,043	0,85	2,39	0,018	38,11 €	62,93 €
PHG0.5-38R	PHG0.5-38RH	38	19,67	20,67	6	18	0,092 - 0,043	0,93	2,60	0,028	39,43 €	65,13 €
PHG0.5-40R	PHG0.5-40RH	40	20,71	21,71	6	18	0,092 - 0,043	1,25	3,04	0,030	40,17 €	66,32 €
PHG0.5-42R	PHG0.5-42RH	42	21,74	22,74	6	18	0,092 - 0,043	1,31	3,19	0,031	40,92 €	67,56 €
PHG0.5-45R	PHG0.5-45RH	45	23,29	24,29	6	18	0,092 - 0,043	1,40	3,42	0,033	42,19 €	69,64 €
PHG0.5-48R	PHG0.5-48RH	48	24,85	25,85	6	18	0,092 - 0,043	1,50	3,65	0,036	43,47 €	71,75 €
PHG0.5-50R	PHG0.5-50RH	50	25,88	26,88	6	18	0,100 - 0,047	1,95	4,12	0,037	44,26 €	73,00 €

Dimensions in mm

# Module 0.5



## DISCOUNTS

Qty	1+	6+	19+	50+
Disc.	List	-5%	-10%	On request

Part number		Z	OP	OD	OA	OM	Backlash	Torque (Nm)	Weight	Price each 1 to 5		
Standard	Hardened	Teeth	Pitch	External	Bore	Boss	(mm)	Standard	Hardened (kg)	Standard	Hardened	
PHG0.5-52R	PHG0.5-52RH	52	26,92	27,92	6	25	0,100 - 0,047	2,03	4,29	0,057	44,91 €	74,09 €
PHG0.5-55R	PHG0.5-55RH	55	28,47	29,47	6	25	0,100 - 0,047	2,15	4,53	0,060	45,82 €	75,72 €
PHG0.5-58R	PHG0.5-58RH	58	30,02	31,02	6	25	0,102 - 0,046	2,27	4,78	0,063	46,75 €	77,21 €
PHG0.5-60R	PHG0.5-60RH	60	31,06	32,06	6	25	0,102 - 0,046	2,67	5,15	0,065	47,44 €	78,28 €
PHG0.5-62R	PHG0.5-62RH	62	32,09	33,09	6	25	0,102 - 0,046	2,76	5,32	0,067	47,96 €	79,14 €
PHG0.5-65R	PHG0.5-65RH	65	33,65	34,65	6	25	0,102 - 0,046	2,89	5,58	0,070	48,92 €	80,75 €
PHG0.5-68R	PHG0.5-68RH	68	35,20	36,20	6	25	0,102 - 0,046	3,03	5,84	0,073	49,47 €	81,72 €
PHG0.5-70R	PHG0.5-70RH	70	36,23	37,23	6	25	0,102 - 0,046	3,11	6,01	0,075	49,73 €	82,06 €
PHG0.5-72R	PHG0.5-72RH	72	37,27	38,27	6	25	0,102 - 0,046	3,20	6,18	0,078	50,31 €	82,97 €
PHG0.5-75R	PHG0.5-75RH	75	38,82	39,82	6	25	0,102 - 0,046	3,34	6,44	0,081	50,68 €	83,62 €
PHG0.5-78R	PHG0.5-78RH	78	40,38	41,38	8	35	0,102 - 0,046	3,47	6,69	0,119	51,55 €	85,10 €
PHG0.5-80R	PHG0.5-80RH	80	41,41	42,41	8	35	0,102 - 0,046	4,60	7,20	0,122	51,79 €	85,49 €
PHG0.5-82R	PHG0.5-82RH	82	42,45	43,45	8	35	0,102 - 0,046	4,71	7,38	0,125	52,26 €	86,26 €
PHG0.5-85R	PHG0.5-85RH	85	44,00	45,00	8	35	0,102 - 0,046	4,89	7,65	0,129	52,78 €	87,13 €
PHG0.5-90R	PHG0.5-90RH	90	46,59	47,59	8	35	0,102 - 0,046	5,17	8,10	0,136	53,78 €	88,76 €
PHG0.5-100R	PHG0.5-100RH	100	51,76	52,76	8	35	0,115 - 0,097	5,89	9,21	0,151	54,62 €	90,10 €
PHG0.5-120R	PHG0.5-120RH	120	62,12	63,12	8	35	0,115 - 0,097	7,07	11,05	0,188	66,07 €	109,06 €
PHG0.5-130R	PHG0.5-130RH	130	67,29	68,29	12	45	0,115 - 0,097	7,66	11,97	0,251	75,22 €	124,13 €
PHG0.5-140R	PHG0.5-140RH	140	72,47	73,47	12	45	0,115 - 0,097	8,25	12,89	0,273	79,01 €	130,44 €
PHG0.5-150R	PHG0.5-150RH	150	77,65	78,65	12	45	0,115 - 0,097	9,03	14,11	0,297	87,27 €	144,05 €
PHG0.5-200R	PHG0.5-200RH	200	103,53	104,53	14	55	0,139 - 0,066	12,17	19,01	0,498	106,24 €	175,31 €
PHG0.5-230R	PHG0.5-230RH	230	119,06	120,06	16	65	0,139 - 0,066	13,99	21,86	0,673	118,86 €	196,19 €

Dimensions in mm

## Our other products



CHN\_CHNSS

Straight long link chain, Galvanised steel



V3RA

3-spoked handwheel without handle, Polyamide



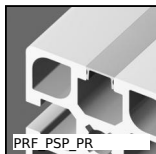
BSPM

Miniature ballscrew, Nut+rolled ballscrew



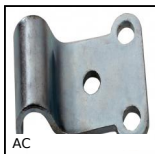
ES

Support base (tripod), Plastic



PRF\_PSP\_PR

Dual purpose strip and cover for aluminium profile, Inserts into slot



AC

Strike for toggle latch, 15mm



RAGFLOW

Floway2® roller track, Roller track



HCSS

Set screw with hexagonal socket, Cup point



CHB

Worm and wheel gear reducer, up to 41 Nm



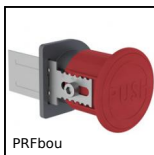
PMB

Anti-vibration machine mount, Oval base plate



SLV

Vertical toggle clamp, Vertical Lever Clamp - stainless steel



PRFbou

Emergency release button for aluminium profile, Emergency release button

## Complementary products