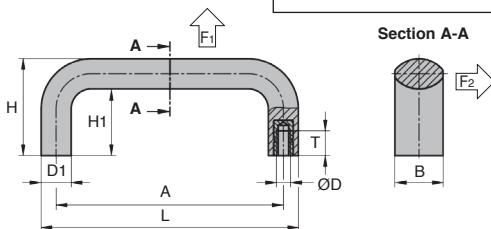
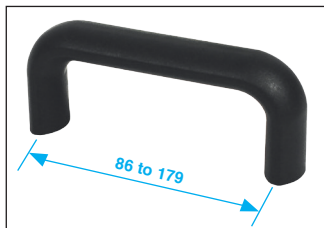


Carrying handle

Thermoplastic

PGM

- Gripping handle for both pushing and pulling
- Rear mounting
- Material:
Black glass-fibre reinforced thermoplastic,
brass threaded insert



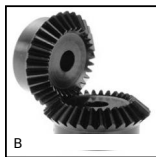
DISCOUNTS

Qty	1+	6+	20+	50+
Disc.	List	-5%	-15%	On request

Part number	A	B	ØD	D1	H	H1	L	T	F1 (N)	F2 (N)	Stock*	Price each 1 to 5
PGM86-M5	86	20	M5	12,5	40	28	98,5	10	4000	1500	✓	6,81 €
PGM86-M6	86	20	M6	12,5	40	28	98,5	9	4000	1500	✓	7,16 €
PGM94-M5	94	20	M5	12,5	40	28	106,5	10	3300	1600	✓	7,13 €
PGM94-M6	94	20	M6	12,5	40	28	106,5	9	3300	1600	✓	7,34 €
PGM117-M5	117	25	M5	16,0	50	34	134,0	10	4400	1800	✓	7,58 €
PGM117-M6	117	25	M6	16,0	50	34	134,0	9	4400	1800	-	8,02 €
PGM117-M8	117	25	M8	16,0	50	34	134,0	14	4400	1800	✓	8,24 €
PGM120-M5	120	25	M5	16,0	50	34	134,0	10	5200	2400	-	7,80 €
PGM120-M6	120	25	M6	16,0	50	34	134,0	9	5200	2400	✓	8,24 €
PGM120-M8	120	25	M8	16,0	50	34	134,0	14	5200	2400	-	8,47 €
PGM132-M5	132	25	M5	16,0	50	34	148,0	10	3700	2600	✓	8,02 €
PGM132-M6	132	25	M6	16,0	50	34	148,0	9	3700	2600	-	8,69 €
PGM132-M8	132	25	M8	16,0	50	34	148,0	14	3700	2600	-	8,92 €
PGM150-M6	150	29	M6	18,0	58	40	168,0	15	5900	1900	-	9,49 €
PGM150-M8	150	29	M8	18,0	58	40	168,0	14	5900	1900	-	9,59 €
PGM150-M10	150	29	M10	18,0	58	40	168,0	14	5900	1900	-	10,26 €
PGM179-M8	179	29	M8	18,0	58	40	197,0	14	3800	3200	✓	11,05 €
PGM179-M10	179	29	M10	18,0	58	40	197,0	14	3800	3200	-	11,37 €

Dimensions in mm

Our other products



Steel bevel gear, 1:1



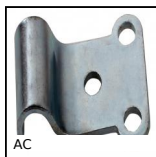
Invisible hinge,
Invisible - 90° opening



HTD Heavy duty
timing pulley, HTD8
Cast



Steel leadscrew,
Medium carbon steel -
1 thread



Strike for toggle latch,
15mm



Worm and wheel set,
Machined plastic
(delrin)



Standard linear
bearing housing,
Closed - Long



Deep groove ball
bearing, Stainless
steel



Steel spur gear, Steel
20NCD2



Storage bin, 8mm



Worm and wheel gear
reducer, up to 980



Hammerhead screw,
Hammerhead screw

Complementary products



Stainless steel pull
handle, Stainless steel



Pull handle - Multi-
sector, Smooth hole



Pull handle,
Aluminium



Pull handle, Brass