



Couplings for servo-motors

PFL

Torque: **0.5 to 10Nm**

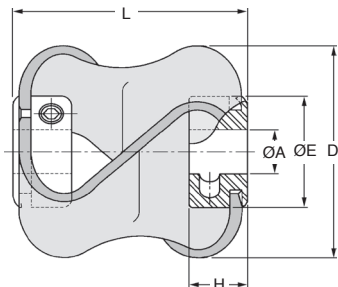
- Tolerates extreme misalignment
- Compact
- Corrosion-resistant
- High resistance to acids, solvents, alkaline solutions, fats, oils and ozone
- High torsional rigidity
- High resistance to tearing
- Retains its flexibility even at low temperatures

Set screw fixing



Characteristics

- High angular, radial, and axial flexibility
- Dampens vibrations
- Absorbs shocks
- Max. working temp.: -40°C to +100°C
- Max. speed: 3000 rpm
- Materials:
Ring: Hytrel® resistant elastomer
Hub: galvanised steel



Part number	Misalignment		
	axial (mm)	angulaire (°)	radial (mm)
PFL28	4,5	10°	2,6
PFL48	7,5	15°	3,2
PFL58	8,5	15°	3,2
PFL61	11,0	15°	3,2

DISCOUNTS

Qty	1+	6+	20+	40+
Disc.	List	-15%	-20%	On request

Part number	ØA Bores (mm)		D	L (+/-1 mm)	H	ØE	Max. torque (Nm)	Vis	Weight (g)	Price each 1 to 5
	Standard	Max.								
PFL28-6	6 x 6	9,53	27	27	7,9	18	0,5	M3	25	✓ 33,75 €
PFL28-8	8 x 8	9,53	27	27	7,9	18	0,5	M3	25	✓ 33,75 €
PFL48-10	10 x 10	12,70	48	48	12,7	25	1,8	M4	92	✓ 39,41 €
PFL48-12	12 x 12	12,70	48	48	12,7	25	1,8	M4	92	✓ 39,41 €
PFL58-12	12 x 12	16,00	54	55	16,0	28	5,0	M5	124	✓ 44,68 €
PFL58-14	14 x 14	16,00	54	55	16,0	28	5,0	M5	124	✓ 44,68 €
PFL61-14	14 x 14	16,00	56	56	16,0	28	10,0	M6	136	✓ 51,12 €
PFL61-16	16 x 16	16,00	56	56	16,0	28	10,0	M6	136	✓ 51,12 €

*Depending on availability - Dimensions in mm

Our other products



PTA80ssEB

Articulated foot with sheet metal base Ø80, Articulated foot



BCM_T

Driving collar, Driving collar



BOX-TOR-MAX

Box set of Nitrile O-rings in nitrile, 2.90 x 1.78mm to 82.14 x 3.53



ZBconique

Machined plastic bevel gear, 1:1



HTD5M_09

HTD Heavy duty timing pulley, HTD5 Aluminium



BHEX

Hexagonal cap, Black technopolymer



SRG

Adjustable latch clamp with strike plate, Stroke from 96mm to 121,7mm



PR40

Articulated foot Ø40, Ø 40



SH2

Parallel axis helical gear, Machined plastic



HTD5M_25

HTD Heavy duty timing pulley, HTD5



MBF

Threaded blocking clamp, Threaded



FR

Steel thread inserts, Steel

Complementary products