

Pull handle

PCA

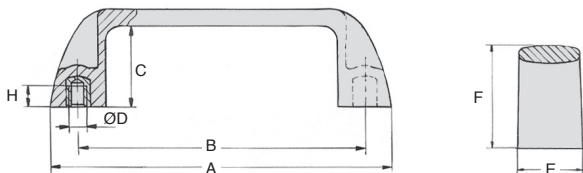
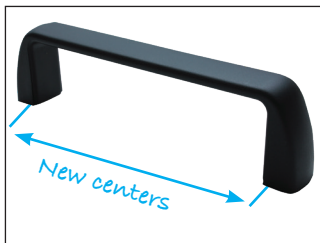
Thermoplastic

Gripping handle for both pushing and pulling

- Rear mounting
- Working T° -30°C to +130°C
- Materials:
 - Thermoplastic PA6 glass fiber reinforced
 - Brass inserts with tapped blind hole

Advantages

- Very strong
- 110mm and 120mm centres correspond to German standards
- No product retention



DISCOUNTS

Qty	1+	6+	20+	50+	100+	250+
Disc.	List	-5%	-10%	-15%	-20%	On request

Part number	B	A	E	F	C	H	ØD	Weight (g)	Stock*	Price each 1 à 5
PCA93-M5	93,5±0,5	111	23	36	29	9	M5	41	-	5,31 €
PCA93-M6	93,5±0,5	111	23	36	29	9	M6	42	-	5,31 €
PCA105-M5	105±0,5	121	26	37	29	9	M5	46	-	5,67 €
PCA105-M6	105±0,5	121	26	37	29	9	M6	48	-	5,67 €
PCA110-M5	110±0,5	133	26	40	32	9	M5	58	-	6,18 €
PCA110-M6	110±0,5	133	26	40	32	9	M6	60	-	6,18 €
PCA117-M5	117±1	133	26	40	32	9	M5	57	-	6,39 €
PCA117-M6	117±1	133	26	40	32	9	M6	59	-	6,39 €
PCA117-M8	117±1	133	26	40	32	9	M8	61	-	6,39 €
PCA120-M8	120±1	137	26	40	32,5	9	M8	58	-	6,48 €
PCA132-M8	132±1	150	26	45	37	9	M8	68	-	7,38 €
PCA150-M8	150±1	169	27	45	37	9	M8	76	-	8,25 €
PCA179-M8	179±1	200	28	51	42	9	M8	101	-	9,42 €
PCA179-M10	179±1	200	28	51	42	13	M10	101	-	9,45 €

*Depending on availability - Dimensions in mm

Our other products



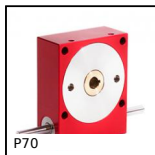
TBEBASE
Base plate for economic mini-table, Allows X-Y cross tables



M0
Worm and wheel set, Machined plastic (delrin)



SCR
Suction cup threaded insert, Adaptator for insert



P70
Worm and wheel gear reducer, up to 164 Nm



SSDB
Stainless steel bevel gear, 2:1



ZA
Shaft for linear guides, Hardened ground steel



CHAupa
Front hinge, 270°



SC2
2 part rigid shaft clamp, Clamping jaw



PRES2HR
Manual workbench press, Force up to 2000 N



ACL-PLAngle
Joining plate for aluminium profile, Economy range



SHTP
Drylin® Linear table, Economy range



NSA
Adjustable clamp, Articulated

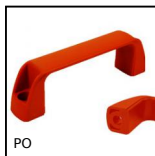
Complementary products



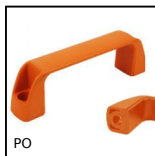
PO
Pull handle - Multi-sector, Smooth hole



PO
Pull handle - Multi-sector, Tapped recessed insert



PO
Pull handle - Multi-sector, Smooth hole



PO
Pull handle - Multi-sector, Smooth hole