

## Clamping plate and manoeuvring knob OP<sub>FL</sub> OP<sub>PM</sub>

### Clamping plate

- Placed on the back of the indicator.
- Allows shaft to be blocked in desired position
- Can be secured in positions A or B.
- Materials: Zirtel® and zamak

### Manoeuvring knob

- The knob attaches directly to the indicator shaft
- Allows manual operation of the position indicator
- An adhesive sticker attached to the knob indicates the direction in which to turn to increase or decrease the displayed value
- Material: anodised black aluminium



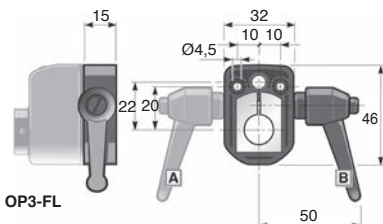
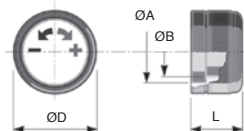
OP-PM  
manual  
control knob



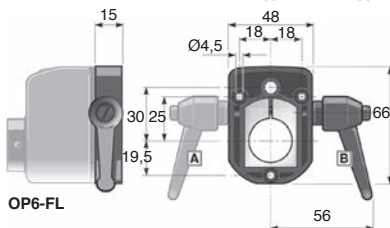
OP-FL  
Clamping plate



Assembly  
OP and OP-PM



OP3-FL



OP6-FL

### DISCOUNTS

Qty	1+	5+	10+	15+	25+
Disc.	List	-6%	-12%	-20%	On request

Part number	ØD	ØA	ØB	L	Stock*	Price each 1 to 4
<b>Clamping plate</b>						
OP3-FL	-	-	-	15,0	✓	68,26 €
OP6-FL	-	-	-	15,0	✓	68,26 €
<b>Manual control knob</b>						
OP3-PM	31,8	20	16	17,5	✓	27,32 €
OP6-PM	44,0	30	26	27,5	✓	32,45 €

\*Depending on availability- Dimensions in mm

## Our other products



DOMI120

Accessories, Turntable



PRF4545

Standard stainless steel profile, 45 x 45 mm



P70

Worm and wheel gear reducer, up to 164 Nm



RHTplss

High Temperature Castor, up to 200kg



CHA35

Hinge for aluminium profile, Hinge



SUP

Self-centering clamping hub nut, Without locknut



SSDB

Stainless steel bevel gear, 2:1



T5P\_T10P

Connecting plate for T type timing belts, T10



NSB

Standard linear bearing housing,



D19\_D29

Compression springs in metre length



PRF\_CLIP\_22

Cable clip for aluminium profile, For



DOMI50

Accessories, Turntable

## Complementary products



OP3

Mechanical digital position indicator, 4 numbers



OP6

Mechanical digital position indicator, 5 numbers



OP7

Mechanical digital position indicator, 5 numbers