

# Set screw **Delrin tip**

Ste

NTM<sub>DL</sub>

Blackened steel finish

**- Materiel**

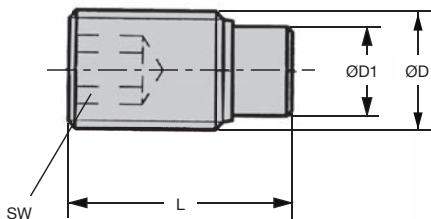
Screw : steel (class 10.9)

Tip : Delrin



**Info**

- The tip is fitted into the screw.  
These screws are designed to lock or gently hold screws, axles, shafts or other components with a high quality surface finish.



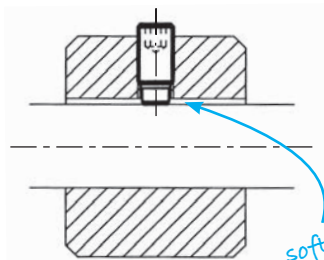
**INCREASED STOCK**

**DISCOUNTS**

<b>Qty</b>	1+	6+	30+	40+	60+	100+	300+
<b>Disc.</b>	List	-10%	-15%	-20%	-25%	-45%	On request

Part number	ØD	ØD1	L	SW	Stock*	Price each 1 to 19
NTM4-7/DL	M4	2	7	2	✓	2,98 €
NTM4-9/DL	M4	2	9	2	✓	2,98 €
NTM4-11/DL	M4	2	11	2	✓	2,98 €
NTM4-13/DL	M4	2	13	2	✓	2,98 €
NTM4-17/DL	M4	2	17	2	✓	2,98 €
NTM4-31/DL	M4	2	31	2	✓	7,21 €
NTM4-41/DL	M4	2	41	2	-	7,37 €
NTM5-9/DL	M5	3	9	2,5	✓	2,75 €
NTM5-11/DL	M5	3	11	2,5	-	2,75 €
NTM5-13/DL	M5	3	13	2,5	-	2,75 €
NTM5-17/DL	M5	3	17	2,5	✓	2,75 €
NTM5-21/DL	M5	3	21	2,5	-	2,98 €
NTM5-31/DL	M5	3	31	2,5	-	7,75 €
NTM5-41/DL	M5	3	41	2,5	-	7,87 €

\*Depending on availability - Dimensions in mm



**INCREASED STOCK**

*soft contact*

Part number	ØD	ØD1	L	SW	Stock*	Price each 1 to 19
NTM6-11/DL	M6	3,5	11,3	3	✓	2,75 €
NTM6-13/DL	M6	3,5	13,3	3	-	2,75 €
NTM6-17/DL	M6	3,5	17,3	3	✓	2,98 €
NTM6-21/DL	M6	3,5	21,3	3	✓	2,98 €
NTM6-26/DL	M6	3,5	26,3	3	✓	3,14 €
NTM6-41/DL	M6	3,5	41,3	3	✓	7,93 €
NTM6-51/DL	M6	3,5	51,3	3	✓	8,08 €
NTM6-61/DL	M6	3,5	61,3	3	-	8,14 €
NTM8-13/DL	M8	5	13,6	4	-	3,14 €
NTM8-17/DL	M8	5	17,6	4	✓	3,14 €
NTM8-21/DL	M8	5	21,6	4	-	3,19 €
NTM8-26/DL	M8	5	26,6	4	✓	3,42 €
NTM8-33/DL	M8	5	33,6	4	✓	3,87 €
NTM8-51/DL	M8	5	51,6	4	-	7,75 €
NTM8-61/DL	M8	5	61,6	4	-	7,87 €
NTM8-81/DL	M8	5	81,6	4	-	7,93 €
NTM10-18/DL	M10	6,5	17,9	5	✓	3,75 €
NTM10-22/DL	M10	6,5	21,9	5	-	3,87 €
NTM10-27/DL	M10	6,5	26,9	5	-	3,93 €
NTM10-34/DL	M10	6,5	33,9	5	✓	4,54 €
NTM10-42/DL	M10	6,5	41,9	5	-	5,20 €
NTM10-52/DL	M10	6,5	51,9	5	-	7,87 €
NTM10-62/DL	M10	6,5	61,9	5	-	7,98 €
NTM10-82/DL	M10	6,5	81,9	5	✓	8,08 €
NTM12-22/DL	M12	8	22,1	6	-	4,36 €
NTM12-27/DL	M12	8	27,1	6	-	4,54 €
NTM12-34/DL	M12	8	34,1	6	-	4,93 €
NTM12-42/DL	M12	8	42,1	6	-	5,54 €
NTM12-52/DL	M12	8	52,1	6	-	6,36 €
NTM12-62/DL	M12	8	62,1	6	-	8,14 €
NTM12-82/DL	M12	8	82,1	6	-	8,31 €

\*Depending on availability - Dimensions in mm

## Our other products



S4  
Chain sprocket-  
stainless steel, 4mm



CMM\_SS  
Male rod ends DIN  
ISO12240-4, Stainless  
steel / bronze -  
Economy range



PSG15  
Spur gear - precision  
range, Pre-hardened  
Steel 35NCD6



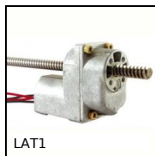
SH3  
Parallel axis helical  
gear, Machined plastic  
(delrin)



PPC<sub>SS</sub>  
Pad eye on mounting  
plate squarred,  
Stainless steel



PR40  
Articulated foot Ø50,  
Ø 50



LAT1  
1A motorised linear  
actuator, 1 ampere



UFX  
Spare tyre UNEFLEX®  
coupling, range



RHT  
High Temperature  
wheel, up to 200kg



CHTRP  
Single and dual  
output gearboxes, Up  
to 28,8 Nm



CHTRP  
Single and dual  
output gearboxes, Up  
to 87,3 Nm



PSG15S  
Spur gear - precision  
range, Stainless steel  
316

## Complementary products



NTM<sub>br</sub>  
Set screw brass tip,  
Brass-point



NTM  
Nylon tipped set  
screw, Nylon-point