

# Set screw **Delrin tip**

Ste

NTM<sub>DL</sub>

Blackened steel finish

**- Materiel**

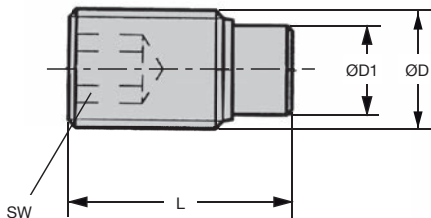
Screw : steel (class 10.9)

Tip : Delrin



**Info**

- The tip is fitted into the screw.  
These screws are designed to lock or gently hold screws, axles, shafts or other components with a high quality surface finish.



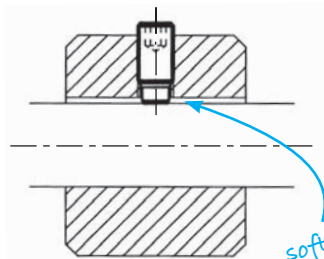
**INCREASED STOCK**

**DISCOUNTS**

Qty	1+	6+	30+	40+	60+	100+	300+
Disc.	List	-10%	-15%	-20%	-25%	-45%	On request

Part number	ØD	ØD1	L	SW	Stock*	Price each 1 to 19
NTM4-7/DL	M4	2	7	2	✓	2,98 €
NTM4-9/DL	M4	2	9	2	✓	2,98 €
NTM4-11/DL	M4	2	11	2	✓	2,98 €
NTM4-13/DL	M4	2	13	2	✓	2,98 €
NTM4-17/DL	M4	2	17	2	✓	2,98 €
NTM4-31/DL	M4	2	31	2	✓	7,21 €
NTM4-41/DL	M4	2	41	2	-	7,37 €
NTM5-9/DL	M5	3	9	2,5	✓	2,75 €
NTM5-11/DL	M5	3	11	2,5	-	2,75 €
NTM5-13/DL	M5	3	13	2,5	-	2,75 €
NTM5-17/DL	M5	3	17	2,5	✓	2,75 €
NTM5-21/DL	M5	3	21	2,5	-	2,98 €
NTM5-31/DL	M5	3	31	2,5	-	7,75 €
NTM5-41/DL	M5	3	41	2,5	-	7,87 €

\*Depending on availability - Dimensions in mm



**INCREASED STOCK**

*soft contact*

Part number	ØD	ØD1	L	SW	Stock*	Price each 1 to 19
NTM6-11/DL	M6	3,5	11,3	3	✓	2,75 €
NTM6-13/DL	M6	3,5	13,3	3	-	2,75 €
NTM6-17/DL	M6	3,5	17,3	3	✓	2,98 €
NTM6-21/DL	M6	3,5	21,3	3	✓	2,98 €
NTM6-26/DL	M6	3,5	26,3	3	✓	3,14 €
NTM6-41/DL	M6	3,5	41,3	3	✓	7,93 €
NTM6-51/DL	M6	3,5	51,3	3	✓	8,08 €
NTM6-61/DL	M6	3,5	61,3	3	-	8,14 €
NTM8-13/DL	M8	5	13,6	4	-	3,14 €
NTM8-17/DL	M8	5	17,6	4	✓	3,14 €
NTM8-21/DL	M8	5	21,6	4	-	3,19 €
NTM8-26/DL	M8	5	26,6	4	✓	3,42 €
NTM8-33/DL	M8	5	33,6	4	✓	3,87 €
NTM8-51/DL	M8	5	51,6	4	-	7,75 €
NTM8-61/DL	M8	5	61,6	4	-	7,87 €
NTM8-81/DL	M8	5	81,6	4	-	7,93 €
NTM10-18/DL	M10	6,5	17,9	5	✓	3,75 €
NTM10-22/DL	M10	6,5	21,9	5	-	3,87 €
NTM10-27/DL	M10	6,5	26,9	5	-	3,93 €
NTM10-34/DL	M10	6,5	33,9	5	✓	4,54 €
NTM10-42/DL	M10	6,5	41,9	5	-	5,20 €
NTM10-52/DL	M10	6,5	51,9	5	-	7,87 €
NTM10-62/DL	M10	6,5	61,9	5	-	7,98 €
NTM10-82/DL	M10	6,5	81,9	5	✓	8,08 €
NTM12-22/DL	M12	8	22,1	6	-	4,36 €
NTM12-27/DL	M12	8	27,1	6	-	4,54 €
NTM12-34/DL	M12	8	34,1	6	-	4,93 €
NTM12-42/DL	M12	8	42,1	6	-	5,54 €
NTM12-52/DL	M12	8	52,1	6	-	6,36 €
NTM12-62/DL	M12	8	62,1	6	-	8,14 €
NTM12-82/DL	M12	8	82,1	6	-	8,31 €

\*Depending on availability - Dimensions in mm

## Our other products



DTR

Chain idler sprocket,  
Chain idler sprocket -  
Plastic



RVM14

Manual worm and  
wheel gearbox,  
Worm/wheel



FGWA

End support, With  
base



PGMT

Pull handle, Steel



BDP1R

Adjustable support  
arm, Single clamp



PRF\_FIX\_ANG

Fastener for  
aluminium profile,  
Angular joint



PX

Optional output shaft  
stainless steel, P  
gearboxes single  
sided outp...



CHML50

Worm and wheel gear  
reducer, up to 107  
Nm - Integrated  
torque limiter



GB-RA

Brass spur gear, Brass  
CuZn39Pb3



SLB

Indexing plunger,  
stainless steel



MHWC

Double-disc flexible  
coupling, Double disk



CHB

Worm and wheel gear  
reducer, up to 41 Nm

## Complementary products



NTMbr

Set screw brass tip,  
Brass-point



NTM

Nylon tipped set  
screw, Nylon-point